

# MECHANICAL CONNECTORS

**BUILT FOR STRENGTH, RELIABILITY AND EFFICIENCY**

Polaris Mechanical Connectors are the easy choice for professionals who need reliable, durable performance. Our comprehensive line of mechanical connectors bring the high standards of Polaris to several new categories, making cost-effective connections that are quick to install and built to last.



## A SOLUTION FOR YOUR APPLICATION

**Polaris Mechanical Connectors** are a simple solution to your connectivity needs, forming secure and robust connections between multiple wires. These highly-conductive, versatile, dual-rated connectors are available in a variety of configurations including aluminum and copper lugs, IPCS, neutral assemblies, terminal blocks, split bolts and distribution blocks. Polaris connectors are built from superior materials and designed to excel in demanding installations.

## DESIGNED FOR EASY INSTALLATION

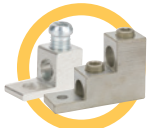
Mechanical connectors are a cost-effective and extremely durable choice for a huge range of installations, forming secure joins for multiple wires in a single junction. Each style of connector, from our dual-rated lugs to our reliable distribution blocks, was designed with installers in mind. Work faster without compromising quality when you install Polaris Mechanical.



Scan for more  
information

## MULTIPLE CONFIGURATIONS

ALUMINUM  
CONNECTORS



COPPER  
CONNECTORS



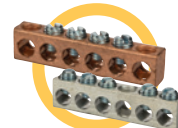
SPLIT BOLT  
CONNECTORS



INSULATION  
PIERCING



NEUTRAL  
ASSEMBLIES



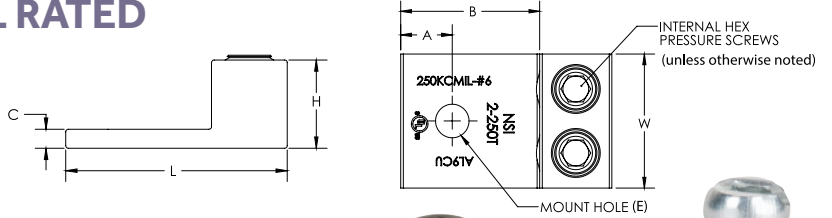
NON-METALLIC  
CONNECTORS



## SINGLE & DOUBLE LUGS - DUAL RATED

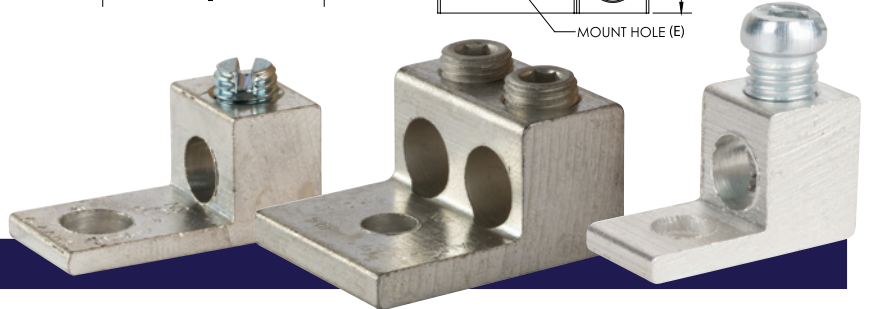
### FEATURES

- Versatile and reusable set-screw connectors made of 6061T-6 aluminum alloy.
- Electro-tin plated for low contact resistance.
- For use with copper or aluminum conductors.



### SPECIFICATIONS

- cULus Listed Wire Connector
- UL486A/B Listed. AL9CU
- Temperature Rating: 90 °C
- Voltage: up to 35kV max



### T, 2-T SERIES

CATALOG NUMBER	WIRE RANGE (Kcmil/AWG)	MTG. BOLT SIZE (IN.)	MAX TORQUE VALUE (IN. LBS)	HEX WRENCH SIZE (IN.)	MTG. HOLE DIA. (E) (IN.)	LENGTH (L) (IN.)	WIDTH (W) (IN.)	HEIGHT (H) (IN.)	TANG LENGTH (A) (IN.)	TANG LENGTH (B) (IN.)	TANG THICK. (IN.)	STD CTN QTY
6TB	4-14 AWG	1/4	45	Slotted/Square	0.209	0.836	0.325	0.500	0.234	0.439	0.100	100
4T	4-14 AWG	1/4	45	Slotted	0.265	1.060	0.500	0.500	0.250	0.690	0.094	100
2T	2-14 AWG	1/4	50	Slotted	0.265	1.160	0.500	0.550	0.310	0.690	0.100	100
0T	1/0-14 AWG	1/4	120	3/16	0.265	1.470	0.630	0.790	0.440	0.850	0.190	50
2-0T	1/0-14 AWG	1/4	120	3/16	0.265	1.470	1.130	0.790	0.440	0.850	0.190	50
2/0T	2/0-14 AWG	1/4	120	3/16	0.265	1.470	0.630	0.790	0.440	0.850	0.190	50
2-2/0T	(2) 2/0-14 AWG	1/4	120	3/16	0.265	1.470	1.250	0.790	0.440	0.850	0.190	50
3/0T	3/0-6 AWG	1/4	250	3/16	0.265	1.875	0.700	0.890	0.500	0.850	0.145	50
250T	250 MCM-6 AWG	5/16	330	5/16	0.328	2.000	0.880	1.020	0.470	1.130	0.220	24
2-250T	(2) 250 MCM-6 AWG	5/16	330	5/16	0.328	2.560	1.630	1.020	0.630	1.690	0.220	10
300T	300 MCM - 6 AWG	5/16	330	5/16	0.328	2.000	0.880	1.130	0.500	1.000	0.250	24
350T	350 MCM-6 AWG	3/8	400	5/16	0.406	2.250	0.990	1.130	0.500	1.250	0.250	20
2-350T	(2) 350 MCM-6 AWG	3/8	400	5/16	0.406	2.880	1.920	1.130	0.630	1.880	0.250	8
500T	500 MCM - 4 AWG	3/8	550	3/8	0.406	2.750	1.200	1.410	0.630	1.630	0.310	6
600T	600 MCM-2 AWG	3/8	550	3/8	0.406	3.180	1.380	1.510	0.630	1.930	0.380	6
2-600T	(2) 600 MCM-2 AWG	1/2	550	3/8	0.531	3.180	2.410	1.510	0.630	1.930	0.380	4
800T	800-300 MCM	1/2	550	1/2	0.531	3.250	1.440	1.690	0.630	1.880	0.440	6
2-800T	(2) 800-300 MCM	1/2	550	1/2	0.531	3.250	2.750	1.690	0.880	1.880	0.440	2
1000T	1000-350 MCM	1/2	600	9/16	0.531	3.250	1.690	1.880	0.750	1.750	0.440	6
2-1000T	(2) 1000-350 MCM	1/2	600	9/16	0.531	3.250	3.190	1.880	0.880	1.750	0.440	2

# SPECIFICATIONS

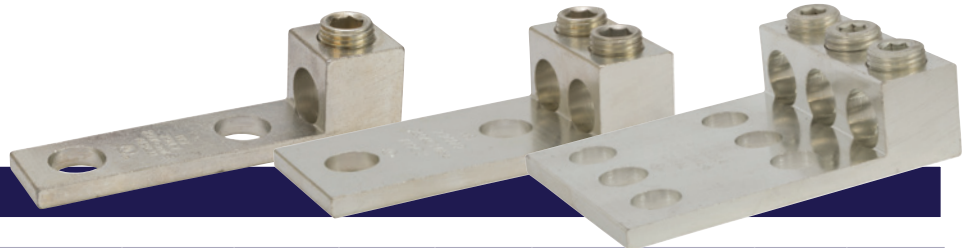
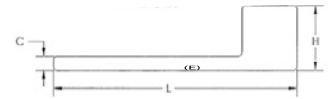
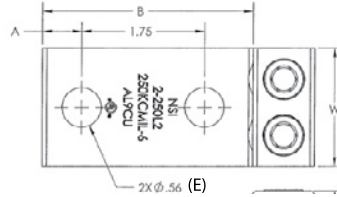
## PANELBOARD LUGS - DUAL RATED

### FEATURES

- Panelboard style for multi-conductor with NEMA mounting hole spacing for turn-prevent and secureness.
- Made of 6061T-6 aluminum alloy.
- Electro-tin plated for low contact resistance.
- For use with copper or aluminum conductors.
- All hole spacing is NEMA standard of 1.75".

### SPECIFICATIONS

- cULus Listed Wire Connector
- UL486A/B Listed. AL9CU
- Temperature Rating: 90 °C
- Voltage: up to 35kV max



### L-SERIES

CATALOG NUMBER	WIRE RANGE (Kcmil/AWG)	MTG. BOLT SIZE (IN.)	MAX TORQUE VALUE (IN. LBS)	HEX WRENCH SIZE (IN.)	MTG. HOLE DIA. (E) (IN.)	LENGTH (L) (IN.)	WIDTH (W) (IN.)	HEIGHT (H) (IN.)	TANG LENGTH (A) (IN.)	TANG LENGTH (B) (IN.)	TANG THICK. (IN.)	STD CTN QTY
250L2	250 MCM-6 AWG	1/2	330	5/16	0.560	4.310	0.880	1.380	0.560	3.090	0.310	15
2-250L2	(2) 250 MCM-6 AWG	1/2	330	5/16	0.560	3.880	1.690	1.020	0.560	3.010	0.220	6
3-250L2/L4	(3) 250 MCM-6 AWG	1/2	330	5/16	0.560	3.880	2.500	1.020	0.560	3.010	0.220	3
350L2	350 MCM-6 AWG	1/2	400	5/16	0.560	4.310	0.990	1.380	0.630	3.090	0.310	8
2-350L2	(2) 350 MCM-6 AWG	1/2	400	5/16	0.560	4.250	1.920	1.130	0.630	3.250	0.250	4
3-350L2/L4	(3) 350 MCM-6 AWG	1/2	400	5/16	0.560	4.250	2.920	1.130	0.630	3.250	0.250	2
600L2	600 MCM-2 AWG	1/2	550	3/8	0.560	4.650	1.380	1.510	0.630	3.400	0.380	4
2-600L2	(2) 600 MCM-2 AWG	1/2	550	3/8	0.560	4.650	2.406	1.510	0.630	3.400	0.380	3
3-600L2/L4	(3) 600 MCM-2 AWG	1/2	550	3/8	0.560	4.650	3.930	1.510	0.630	3.400	0.380	2
800L2	800-350 MCM	1/2	550	1/2	0.560	4.750	1.440	1.690	0.630	3.380	0.440	4
2-800L2	(2) 800-350 MCM	1/2	550	1/2	0.560	4.750	2.750	1.690	0.630	3.380	0.440	2
3-800L2/L4	(3) 800-350 MCM	1/2	550	1/2	0.560	4.750	4.060	1.690	0.630	3.380	0.440	2
1000L2	1000-500 MCM	1/2	600	9/16	0.560	4.940	1.690	1.880	0.630	3.440	0.440	4
2-1000L2	(2) 1000-500 MCM	1/2	600	1/2	0.560	4.940	3.190	1.880	0.630	3.440	0.440	2
3-1000L2/L4	(3) 1000-500 MCM	1/2	600	9/16	0.560	4.940	4.690	1.880	0.630	3.440	0.440	2

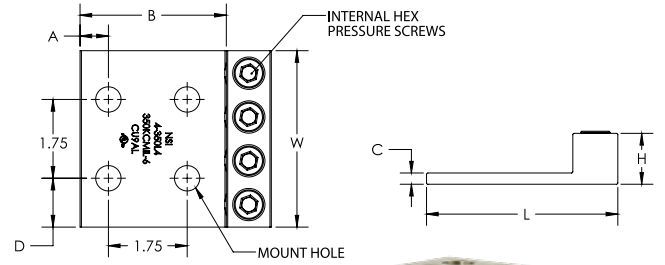
# PANELBOARD LUGS - DUAL RATED

## FEATURES

- Large size set-screw connectors with multiple mounting, NEMA spaced holes for a secure, turn-prevent connection.
- Made of 6061T-6 aluminum alloy.
- Tin plated for low contact resistance.
- For use with copper or aluminum conductors.
- All hole spacing is NEMA standard of 1.75".

## SPECIFICATIONS

- cULus Listed Wire Connector E155027
- UL486A/B Listed. AL9CU
- Temperature Rating: 90 °C
- Voltage: up to 35kV max



## L4, LL4, LL2 SERIES

CATALOG NUMBER	WIRE RANGE (Kcmil/AWG)	MTG. BOLT SIZE (IN.)	MAX TORQUE VALUE (IN. LBS)	HEX WRENCH SIZE (IN.)	MTG. HOLE DIA. (E) (IN.)	LENGTH (L) (IN.)	WIDTH (W) (IN.)	HEIGHT (H) (IN.)	TANG LENGTH (A) (IN.)	TANG LENGTH (B) (IN.)	TANG THICK. (IN.)	STD CTN QTY
4-250L4	250 MCM-6 AWG	1/2	330	5/16	0.560	3.880	3.300	1.020	0.560	3.010	0.220	3
4-350L4	350 MCM-6 AWG	1/2	400	5/16	0.560	4.250	3.920	1.130	0.630	3.250	0.250	2
4-600L4	600 MCM-2 AWG	1/2	550	3/8	0.560	4.650	5.000	1.510	0.630	3.400	0.380	2
600LL2	600 MCM-2 AWG	1/2	550	3/8	0.560	5.500	1.380	1.510	0.630	3.250	0.380	4
3-600LL4	600 MCM-2 AWG	1/2	550	3/8	0.560	5.500	3.930	1.510	0.630	3.250	0.380	2
4-600LL4	600 MCM-2 AWG	1/2	550	3/8	0.560	5.500	5.000	1.510	0.630	3.250	0.380	2
4-800L4	800-350 MCM	1/2	550	1/2	0.560	4.750	5.380	1.690	0.630	3.380	0.440	2
800LL2	800-350 MCM	1/2	550	1/2	0.560	5.750	1.440	1.690	0.630	3.440	0.440	4
3-800LL4	800-350 MCM	1/2	550	1/2	0.560	5.750	4.060	1.690	0.630	3.380	0.440	2
4-800LL4	800-350 MCM	1/2	550	1/2	0.560	5.750	5.380	1.690	0.630	3.440	0.440	2
4-1000L4	1000-500 MCM	1/2	600	9/16	0.560	4.940	6.190	1.880	0.630	3.440	0.440	2
1000LL2	1000-500 MCM	1/2	600	9/16	0.560	6.190	1.690	1.880	0.630	3.630	0.440	4
3-1000LL4	1000-500 MCM	1/2	600	9/16	0.560	6.190	4.690	1.880	0.630	3.440	0.440	2
4-1000LL4	1000-500 MCM	1/2	600	9/16	0.560	6.180	6.190	1.880	0.630	3.630	0.440	2
1500LL2 (NOT UL/CSA)	1500-1000 MCM	1/2	-	9/16	0.560	6.625	2.000	1.975	0.650	3.175	0.750	4

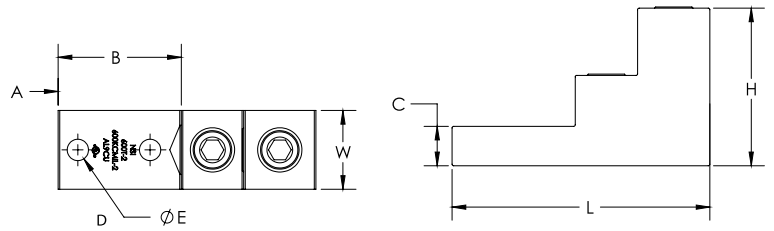
# STACKED LUGS - DUAL RATED

## FEATURES

- Large size set-screw connectors with wire holes stacked on top of each other to minimize the width of the connector.
- Made of 6061T-6 aluminum alloy.
- Electro-tin plated for low contact resistance.
- For use with copper or aluminum conductors.

## SPECIFICATIONS

- cULus Listed Wire Connector E155027
- UL486A/B Listed. AL9CU
- Temperature Rating: 90 °C
- Voltage: up to 35kV max



### T2-SERIES

CATALOG NUMBER	WIRE RANGE (Kcmil/AWG)	MTG. BOLT SPACE (D)	MTG. BOLT SIZE (IN.)	MAX TORQ. VAL. (IN. LBS)	HEX WRENCH SIZE (IN.)	MTG. HOLE DIA. (E) (IN.)	LENGTH (L) (IN.)	WIDTH (W) (IN.)	HEIGHT (H) (IN.)	END OF CONN. TO CTR. (A) (IN.)	TANG LENGTH (B) (IN.)	TANG THICK. (IN.)	STD CTN QTY
300T-2	(2) 300 MCM-6 AWG	-	5/16	330	5/16	0.330	3.000	1.000	2.000	0.470	1.000	0.310	10
350T-2	(2) 350 MCM-6 AWG	0.600	5/16	400	5/16	0.330	3.560	1.060	2.000	0.470	1.560	0.250	10
600T-2	(2) 600 MCM-2 AWG	1.380	3/8	550	3/8	0.410	4.910	1.500	3.000	0.380	2.340	0.750	2
600T-3	(3) 600 MCM-2 AWG	1.380	3/8	550	3/8	0.410	4.910	2.500	3.000	0.380	2.340	0.750	2
600T-4	(4) 600 MCM-2 AWG	1.380	3/8	550	3/8	0.410	4.910	2.500	3.000	0.380	2.340	0.750	2
800T-2	(2) 800-300 MCM	1.380	3/8	550	3/8	0.410	4.910	1.500	3.000	0.380	2.340	0.750	2
800T-3	(3) 800-300 MCM	1.380	3/8	550	1/2	0.410	4.910	2.630	3.000	0.380	2.340	0.750	2
800T-4	(4) 800-300 MCM	1.380	3/8	550	1/2	0.410	4.910	2.630	3.000	0.380	2.340	0.750	2

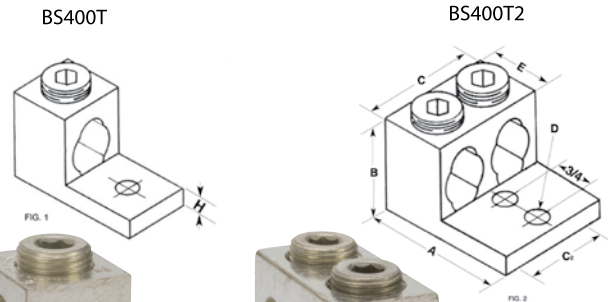
# DUAL RANGE LUGS - DUAL RATED

## FEATURES

- Set-screw connectors that will accept either one or two wires.
- Made of 6061T-6 aluminum alloy.
- Electro-tin plated for low contact resistance.
- For use with copper or aluminum conductors.

## SPECIFICATIONS

- CSA 70142.
- UL Listed Wire Connector
- UL486A/B Listed. AL9CU
- Temperature Rating: 90 °C
- Voltage: up to 35kV max



### BS SERIES

CATALOG NUMBER	WIRE RANGE (Kcmil/AWG)	MTG. BOLT SIZE (IN.)	MAX TORQUE VALUE (IN. LBS)	HEX WRENCH SIZE (IN.)	MTG. HOLE DIA. (D) (IN.)	LEN. (A) (IN.)	WTH. (C) (IN.)	HGT. (B) (IN.)	TANG LEN. (F) (IN.)	TANG THICK. (H) (IN.)	STD CTN QTY
BS400T	(1) 600 MCM-4 AWG	0.562	500	3/8	0.625	2.810	1.380	1.810	0.725	0.312	6
BS400T	(2) 250 MCM-1/0 AWG	0.562	500	3/8	0.625	2.810	1.380	1.810	0.725	0.312	6
BS400T2	(2) 250 MCM-1/0 AWG	0.250	500	3/8	0.281	3.812	2.468	2.000	0.325	0.375	4
BS400T2	(4) 250 MCM-1/0 AWG	0.250	500	3/8	0.281	3.812	2.468	2.000	0.325	0.375	4



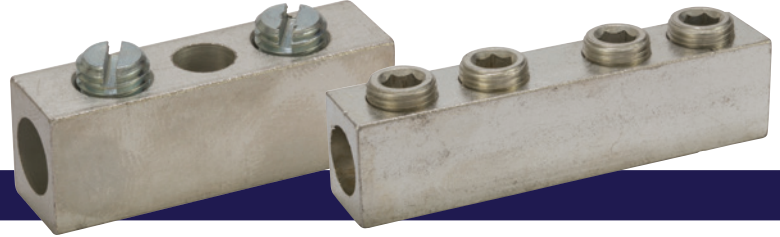
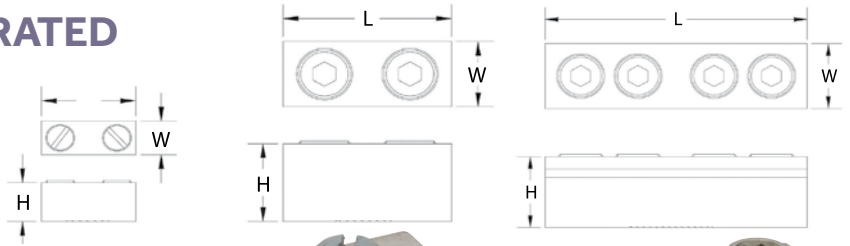
# SPLICER & REDUCER - DUAL RATED

## FEATURES








- For splicing two copper or aluminum wires of equal or different sizes.
- Made of 6061T-6 aluminum alloy.
- Electro-tin plated for low contact resistance.

## SPECIFICATIONS

- cULus Listed Wire Connector
- UL486A/B Listed. AL9CU
- Temperature Rating: 90 °C
- Voltage: up to 35kV max



### SR SERIES

CATALOG NUMBER	WIRE RANGE (Kcmil/AWG)	MAX TORQUE VALUE (IN. LBS)	HEX WRENCH SIZE (IN.)	LENGTH (L) (IN.)	WIDTH (W) (IN.)	HEIGHT (H) (IN.)	STD CTN QTY
2SR	2-14 AWG	50	Slotted 	1.594	0.443	0.550	50
1/0SR	1/0-14 AWG	120	Slotted 	1.500	0.530	0.630	25
4/0SR	4/0-6 AWG	250	5/16 	2.310	0.812	1.000	24
250SR	250 MCM-6 AWG	330	5/16 	4.094	0.812	1.000	10
350SR	350 MCM-6 AWG	400	3/8 	4.190	1.130	1.190	8
500SR	500 MCM-3/0 AWG	550	3/8 	5.000	1.380	1.500	3
750SR	750-250 MCM	550	3/8 	6.250	1.630	1.750	3

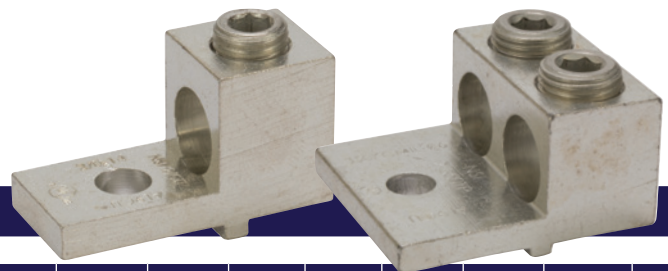
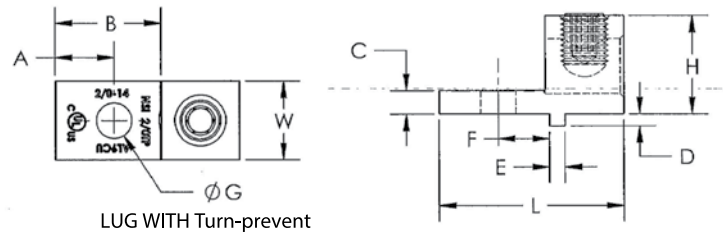
# SINGLE & DOUBLE "TURN-PREVENT" - DUAL RATED

## FEATURES


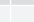
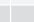
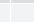
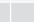
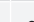
- Large size set-screw connectors with wire holes stacked on top of each other to minimize the width of the connector.
- Made of 6061T-6 aluminum alloy.
- Electro-tin plated for low contact resistance.
- For use with copper or aluminum conductors.
- Turn prevent node located on bottom prevents rotation of lug.

## SPECIFICATIONS

- cULus Listed Wire Connector
- UL486A/B Listed. AL9CU
- Temperature Rating: 90 °C
- Voltage: up to 35kV max



### TP SERIES

CAT#	WIRE RANGE (Kcmil/AWG)	MTG. BOLT SIZE (IN.)	MAX TORQ. VAL. (IN. LBS)	HEX WRENCH SIZE (IN.)	MTG. HOLE TO TURN (F) (IN.)	MTG. HOLE DIA. (IN.)	TURN PVT. LEN. (D) (IN.)	TURN PVT. THICK. (E) (IN.)	LEN. (L) (IN.)	WTH. (W) (IN.)	HGT. (H) (IN.)	TANG LEN. (A) (IN.)	TANG LEN. (B) (IN.)	TANG THICK. (IN.)	STD CTN QTY
2/0TP	2/0-14 AWG	1/4	120	3/16 	0.410	0.280	0.090	0.130	1.470	0.880	1.130	0.470	0.840	0.190	50
300TP	300 MCM-6 AWG	7/16	330	5/16 	0.490	0.440	0.090	0.190	2.000	0.990	1.130	0.380	1.000	0.250	24
350TP	350 MCM-6 AWG	5/16	400	5/16 	0.630	0.340	0.090	0.190	2.250	0.990	1.130	0.500	1.250	0.250	20
2-350TP	(2) 350 MCM-6 AWG	3/8	400	5/8 	0.630	0.406	0.090	0.187	2.250	1.920	1.130	0.500	1.125	0.250	8
600TP	600 MCM-2 AWG	1/2	550	3/8 	0.630	0.530	0.090	0.190	3.180	1.380	1.510	0.880	1.930	0.380	6
2-600TP	(2) 600 MCM-2 AWG	1/2	550	3/8 	0.630	0.530	0.130	0.190	3.180	2.410	1.510	0.880	1.930	0.380	4

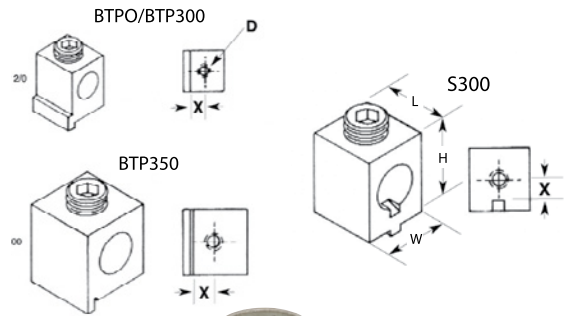
# BOX TURN-PREVENT LUGS - DUAL RATED

## FEATURES

- Made of 6061T-6 aluminum alloy.
- Electro-tin plated for low contact resistance.
- For use with copper or aluminum conductors.
- Design includes threaded mounting hole.
- Turn prevent node located on bottom prevents rotation of lug

## SPECIFICATIONS

- CSA 70142.
- UL486A/B Listed. AL9CU.
- Temperature Rating: 75 °C.
- Voltage: up to 35kV max



### BTP SERIES

CATALOG NUMBER	WIRE RANGE (Kcmil/AWG)	MTG. BOLT SIZE (IN.)	MAX TORQUE VALUE (IN. LBS)	HEX WRENCH SIZE (IN.)	MTG. HOLE DIA. (E) (IN.)	LENGTH (L) (IN.)	WIDTH (W) (IN.)	HEIGHT (H) (IN.)	TURN PVT. TO MTG. HOLE (X) (IN.)	STD CTN QTY
BTPO	0-10 AWG	# 10	120	5/16	# 10	0.620	0.660	0.830	0.230	25
BTP300	300 MCM-6 AWG	1/4	325	3/8	0.250	0.980	0.970	1.160	0.385	40
S300	300 MCM-6 AWG	1/4	325	3/8	0.250	0.880	0.880	1.090	0.312	25
BTP350	350 MCM-6 AWG	1/4	375	3/8	0.250	0.880	0.880	1.100	0.440	48

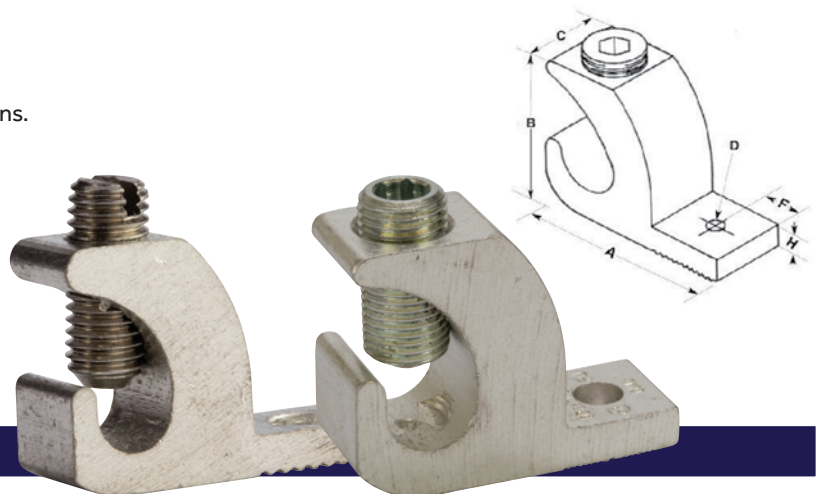
# LAY-IN - DUAL RATED

## FEATURES

- Lay-in connectors offer the ultimate in flexibility.
- Excellent for grounding and continuous loop applications.
- Made of 6061T-6 aluminum alloy.
- Electro-tin plated for low contact resistance.
- For use with copper or aluminum conductors.
- Stainless Steel Screw (GLA-4 only).

## SPECIFICATIONS

- UL Listed/cULus Listed for Wire Connector.
- UL486A/B Listed. AL9CU.
- Temperature Rating: 90 °C.
- Voltage: up to 35kV max
- \*UL467 Listed Grounding & Bonding Equipment.



### GLA SERIES

CATALOG NUMBER	WIRE RANGE (Kcmil/AWG)	MTG. BOLT SIZE (IN.)	MAX TORQUE VALUE (IN. LBS)	HEX WRENCH SIZE (IN.)	MTG. HOLE DIA. (D) (IN.)	LENGTH (A) (IN.)	HEIGHT (B) (IN.)	WIDTH (C) (IN.)	TANG LEN. (F) (IN.)	TANG THICK. SS (H) (IN.)	STD CTN QTY
GLA-4	4-14 AWG	0.187	45	Slotted	0.218	1.070	0.380	0.750	0.190	0.150	100
GLA-0	1/0-8 AWG	0.250	120	Slotted	0.272	1.500	0.600	1.100	0.300	0.220	40
GLA-000	3/0-6 AWG	0.375	250	1/4	0.330	2.000	0.800	1.500	0.400	0.300	20
GLA-250	250 MCM-6 AWG	0.375	330	1/4	0.330	2.200	0.800	1.700	0.400	0.300	20

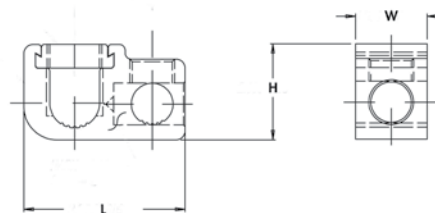
# T-TAP CONNECTOR & COVERS - DUAL RATED

## FEATURES

- Excellent for tapping of main conductor due to lay-in feature.
- Perpendicular tap allows for parallel or "T" tap configuration.
- Flexible cover allows for either parallel or "T" tap wire entry.
- Secure snap cover eliminates need for taping.
- Electro-tin plated for low contact resistance.

## SPECIFICATIONS

- UL Listed/cULus Listed for Wire Connector E155274.
- UL486A/B Listed. AL9CU
- CSA 701642.
- Temperature Rating: 90 °C.
- Voltage: 600V.

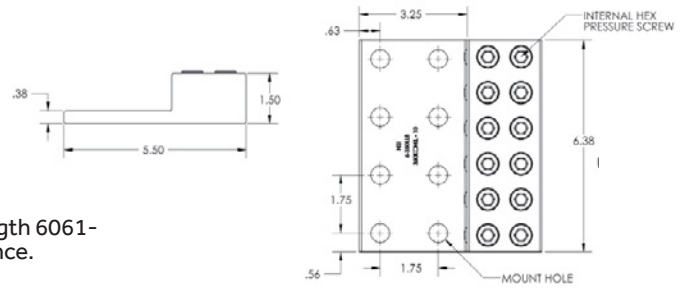


### GP, GC SERIES

CATALOG NUMBER	MAIN (RUN) WIRE RANGE	TAP WIRE RANGE	STYLE	COLOR CODE	HEX WRENCH SIZE (IN.)	MAX TORQUE VALUE (IN. LBS)	LENGTH (L) (IN.)	WIDTH (W) (IN.)	HEIGHT (H) (IN.)	STD CTN QTY
GP-2	2-12 STR	4-14 STR	Parallel "T" Tap	-	Slotted	50	1.390	0.630	0.880	25
GP-0	1/0-2 AWG	1/0-14 AWG	Parallel "T" Tap	-	0.187	120	1.750	0.750	1.000	12
GP-250-0	250 MCM-1/0 AWG	1/0-14 AWG	Parallel "T" Tap	-	0.187, 0.312	275,120	2.030	1.060	1.310	12
GP-250	250 MCM-1/0 AWG	250 MCM-6 AWG	Parallel "T" Tap	-	0.312	275	2.280	1.060	1.310	12
GP-350	350 MCM-4/0 AWG	350 MCM-6 AWG	Parallel "T" Tap	-	0.312	275	2.560	1.250	1.440	6
GP-500	500-350 MCM	500-2 MCM	Parallel "T" Tap	-	0.375	375	3.130	1.380	1.750	6
GP-750	750-500 MCM	500-2 MCM	Parallel "T" Tap	-	0.375	375	3.380	1.500	2.000	3
GC-2	-	-	Insulated Cover	Yellow	-	-	2.250	1.370	1.110	12
GC-0	-	-	Insulated Cover	Grey	-	-	2.610	2.170	1.260	6
GC-250	-	-	Insulated Cover	Red	-	-	3.440	3.180	1.630	3
GC-350	-	-	Insulated Cover	Yellow	-	-	3.760	3.290	1.760	3
GC-500	-	-	Insulated Cover	Blue	-	-	4.890	3.340	2.120	3
GC-750	-	-	Insulated Cover	Orange	-	-	4.550	3.450	2.340	3
GP-2WC	2-12 STR	4-14 STR	Parallel "T" Tap with Cover	Yellow	Slotted	50	2.250	1.370	1.110	12
GP-0WC	1/0-2 AWG	1/0-14 AWG	Parallel "T" Tap with Cover	Gray	0.187	120	2.610	2.170	1.260	10
GP-250-0WC	250 MCM-1/0 AWG	1/0-14 AWG	Parallel "T" Tap with Cover	Red	0.187, 0.312	120, 275	3.440	3.180	1.630	5
GP-250WC	250 MCM-1/0 AWG	250 MCM-6 AWG	Parallel "T" Tap with Cover	Red	0.312	275	3.440	3.180	1.630	5
GP-350WC	350 MCM-4/0 AWG	350 MCM-6 AWG	Parallel "T" Tap with Cover	Yellow	0.312	275	3.760	3.290	1.760	6
GP-500WC	500-350 MCM	500-2 MCM	Parallel "T" Tap with Cover	Blue	0.375	375	4.890	3.340	2.120	2
GP-750WC	750-500 MCM	500-2 MCM	Parallel "T" Tap with Cover	Orange	0.375	375	4.550	3.450	2.340	2



# HEAVY-DUTY TRANSFORMER LUGS - DUAL RATED

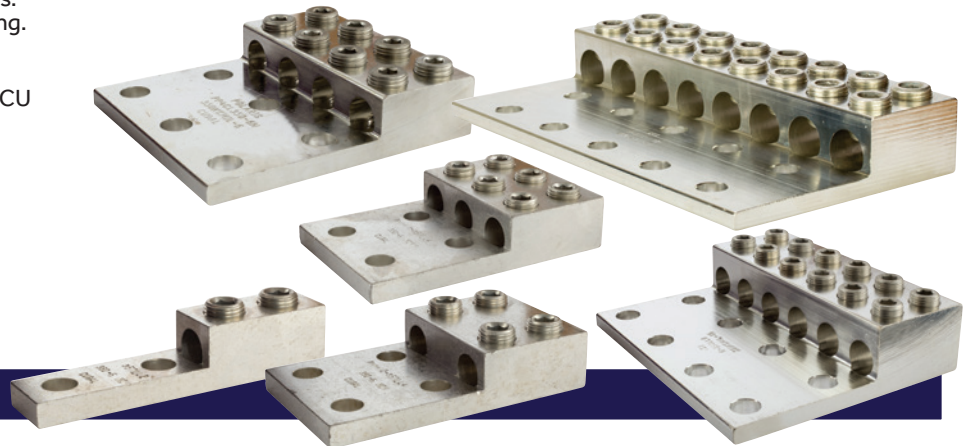


## FEATURES

- Versatile and reusable set-screw connectors made from high strength 6061-T6 aluminum alloy for superior electrical and mechanical performance.
- Two set-screws per wire hole ensure an exceptional connection.
- Electro-tin plated for low contact resistance.
- For use with copper or aluminum conductors.
- Mounting hole spacing is NEMA 1.75" spacing.

## SPECIFICATIONS

- Meets or exceeds ANSI C119.4 Class A. AL/CU
- Temperature Rating: 90 °C. AL/CU



## LL SERIES

CATALOG NUMBER	WIRE RANGE (Kcmil/AWG)	MAX TORQUE VALUE (IN. LBS)	# OF CONDUCTORS	# OF MTG. HOLE	MTG. HOLE DIA. (IN.)	MTG. HOLE SPACE (IN.)	HEX WRENCH SIZE (IN.)	BOLT SIZE (IN.)	LENGTH (L) (IN.)	WIDTH (W) (IN.)	HEIGHT (H) (IN.)	STD CTN QTY
350LL2	350 MCM-6 AWG	400	1	2	0.563	1.750	3/8	1/2	5.310	1.130	1.380	1
2-350LL4	350 MCM-6 AWG	400	2	4	0.563	1.750	3/8	1/2	5.310	2.000	1.380	1
3-350LL4	350 MCM-6 AWG	400	3	4	0.563	1.750	3/8	1/2	5.310	2.940	1.380	1
4-350LL6	350 MCM-6 AWG	400	4	6	0.563	1.750	3/8	1/2	5.310	3.870	1.380	1
6-350LL8	350 MCM-6 AWG	400	6	8	0.563	1.750	3/8	1/2	5.310	5.750	1.380	1
8-350LL8	350 MCM-6 AWG	400	8	8	0.563	1.750	3/8	1/2	5.310	7.620	1.380	1
8-350LL10	350 MCM-6 AWG	400	8	10	0.563	1.750	3/8	1/2	5.310	7.620	1.380	1
2-600LL4	600 MCM-2 AWG	550	2	4	0.563	1.750	3/8	1/2	5.875	2.410	1.562	1
4-600LL6	600 MCM-2 AWG	550	4	6	0.563	1.750	3/8	1/2	5.875	4.780	1.562	1
6-600LL6	600 MCM-2 AWG	550	6	6	0.563	1.750	3/8	1/2	8.750	5.750	1.750	1
2-800LL4	800-300 MCM	550	2	4	0.563	1.750	1/2	1/2	6.188	2.737	1.875	1
4-800LL8	800-300 MCM	550	4	8	0.563	1.750	1/2	1/2	6.188	5.487	1.875	1
2-1000LL4	800-300 MCM	550	2	4	0.563	1.750	1/2	1/2	6.188	2.982	1.875	1
4-1000LL8	1000-500 MCM	600	4	8	0.563	1.750	1/2	1/2	6.188	5.982	1.875	1
8-1000LL12	1000-500 MCM	600	8	12	0.563	1.750	1/2	1/2	6.188	11.982	1.875	1

# TRANSFORMER LUGS - DUAL RATED

## FEATURES

- Versatile and reusable set-screw connectors made from high strength 6061-T6 aluminum alloy for superior electrical and mechanical performance.
- Electro-tin plated for low contact resistance.
- For use with copper or aluminum conductors.
- Mounting hole spacing is NEMA 1.75".

## SPECIFICATIONS

- Meets or exceeds ANSI C119.4 Class A . AL/CU
- Temperature Rating: 90 °C. AL/CU



### T, L SERIES

CATALOG NUMBER	WIRE RANGE (Kcmil/AWG)	MAX TORQUE VALUE (IN. LBS)	# OF CONDUCTORS	# OF MTG. HOLE	MTG. HOLE DIA. (IN.)	MTG. HOLE SPACE (IN.)	HEX WRENCH SIZE (IN.)	BOLT SIZE (IN.)	LENGTH (L) (IN.)	WIDTH (W) (IN.)	HEIGHT (H) (IN.)	STD CTN QTY
2-350T2	350 MCM-6 AWG	400	2	2	0.375	1.750	3/8"	5/16"	2.250	1.940	1.250	1
3-350T2	350 MCM-6 AWG	400	3	2	0.375	1.750	3/8"	5/16"	2.250	2.840	1.250	1
4-350T3	350 MCM-6 AWG	400	4	3	0.375	1.750	3/8"	5/16"	2.250	3.750	1.250	1
6-350T4	350 MCM-6 AWG	400	6	4	0.375	1.750	3/8"	5/16"	2.250	4.660	1.250	1
8-350T4	350 MCM-6 AWG	400	8	4	0.375	1.750	3/8"	5/16"	2.250	5.560	1.250	1
2-350L4	350 MCM-6 AWG	400	2	4	0.563	1.750	3/8"	1/2"	4.310	2.000	1.380	1
3-350L4	350 MCM-6 AWG	400	3	4	0.563	1.750	3/8"	1/2"	4.310	2.940	1.380	1
4-350L6	350 MCM-6 AWG	400	4	6	0.563	1.750	3/8"	1/2"	4.310	3.870	1.380	1
6-350L8	350 MCM-6 AWG	400	6	8	0.563	1.750	3/8"	1/2"	4.310	5.750	1.380	1
8-350L8	350 MCM-6 AWG	400	8	8	0.563	1.750	3/8"	1/2"	4.310	7.620	1.380	1
2-600L4	600 MCM-2 AWG	550	2	4	0.563	1.750	3/8"	1/2"	4.500	2.410	1.630	1
3-600L4	600 MCM-2 AWG	550	3	4	0.563	1.750	3/8"	1/2"	4.500	3.590	1.630	1
4-600L6	600 MCM-2 AWG	550	4	6	0.563	1.750	3/8"	1/2"	4.500	4.780	1.630	1
6-600L8	600 MCM-2 AWG	550	6	8	0.563	1.750	3/8"	1/2"	4.500	7.160	1.630	1

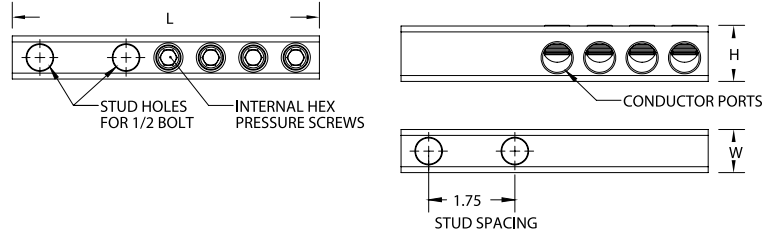
# TRANSFORMER STUD CONNECTORS - DUAL RATED

## FEATURES

- Made from 6061T-6 aluminum alloy.
- Electro-tin plated for low contact resistance.
- Two NEMA 1.75" holes for easy attachment.

## SPECIFICATIONS

- Temperature Rating: 90 °C. AL9CU
- Voltage: up to 35kV max



### STL SERIES

CATALOG NUMBER	WIRE RANGE (Kcmil/AWG)	MAX TORQUE VALUE (IN. LBS)	# OF CONDUCTORS	MTG. HOLE DIA. (IN.)	MTG. HOLE SPACE (IN.)	HEX WRENCH SIZE (IN.)	BOLT SIZE (IN.)	LENGTH (L) (IN.)	WIDTH (W) (IN.)	HEIGHT (H) (IN.)	STD CTN QTY
STL250-4	250 MCM-6 AWG	360	4	0.560	1.750	5/16	1/2	6.240	0.875	1.125	6
STL250-6	250 MCM-6 AWG	360	6	0.560	1.750	5/16	1/2	7.960	0.875	1.125	6
STL250-8	250 MCM-6 AWG	360	8	0.560	1.750	5/16	1/2	9.680	0.875	1.125	6
STL350-4	350 MCM-6 AWG	400	4	0.560	1.750	5/16	1/2	6.960	1.000	1.440	6
STL350-6	350 MCM-6 AWG	400	6	0.560	1.750	5/16	1/2	9.060	1.000	1.440	6
STL350-8	350 MCM-6 AWG	400	8	0.560	1.750	5/16	1/2	11.160	1.000	1.440	6
STL500-4	500 MCM-4 AWG	450	4	0.560	1.750	5/16	1/2	7.500	1.130	1.630	6
STL500-6	500 MCM-4 AWG	450	6	0.560	1.750	5/16	1/2	9.740	1.130	1.630	6
STL500-8	500 MCM-4 AWG	450	8	0.560	1.750	5/16	1/2	12.030	1.130	1.630	6
STL750-4	750-250 MCM	550	4	0.560	1.750	3/8	1/2	8.570	1.440	2.000	3
STL750-6	750-250 MCM	550	6	0.560	1.750	3/8	1/2	11.420	1.440	2.000	3
STL750-8	750-250 MCM	550	8	0.560	1.750	3/8	1/2	14.280	1.440	2.000	3

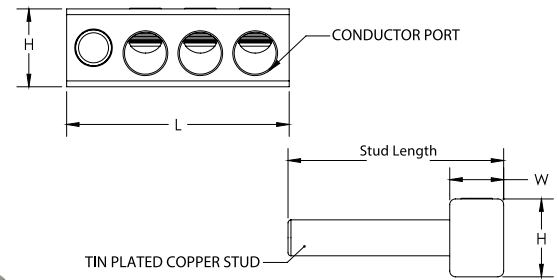
# TRANSFORMER STUD CONNECTORS - DUAL RATED

## FEATURES

- Versatile and reusable set-screw connectors made from high strength 6061-T6 aluminum alloy for superior electrical and mechanical performance.
- Clear plated for low contact resistance; stud is tin plated copper which provides low contact resistance for connection to transformer.
- For use with copper and aluminum conductors.
- Hole configuration varies.

## SPECIFICATIONS

- Meets or exceeds ANSI C119.4 Class A. AL/CU



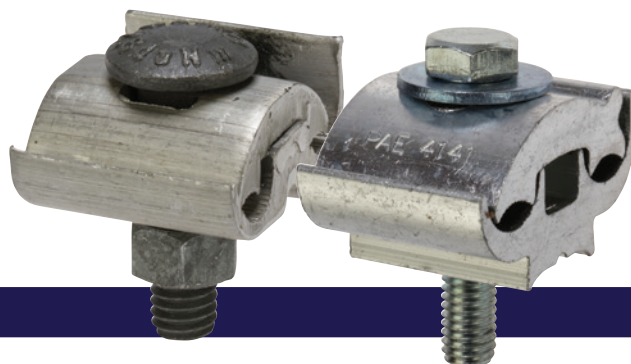
## TS SERIES

CATALOG NUMBER	WIRE RANGE (Kcmil/AWG)	MAX TORQUE VALUE (IN. LBS)	COPPER STUD DIA. (IN.)	STUD LENGTH (IN.)	HEX WRENCH SIZE (IN.)	LENGTH (L) (IN.)	WIDTH (W) (IN.)	HEIGHT (H) (IN.)	STD CTN QTY
TS1/0-2	1/0-4 AWG	180	0.375	3.00	5/16	2.030	0.630	0.880	1
TS1/0-4	1/0-4 AWG	180	0.375	3.00	5/16	2.680	0.880	0.880	1
TS250-2	250 MCM-6 AWG	360	0.500	4.00	5/16	2.590	0.880	1.130	1
TS250-3	250 MCM-6 AWG	360	0.500	4.00	5/16	3.460	0.880	1.130	1
TS250-4	250 MCM-6 AWG	360	0.500	4.00	5/16	4.320	0.880	1.130	1
TS250-8	250 MCM-6 AWG	360	0.500	4.00	5/16	7.770	0.880	1.130	1

# PARALLEL GROOVE CLAMPS - DUAL RATED

## FEATURES

- High strength aluminum extruded alloy fittings assembled with steel or anodized high strength aluminum flat washers for heavy duty service entrance or for use as heavy duty distribution armor rod clamps.
- Serrated grooves provide increased contact. Supplied pre-filled with oxide inhibitor.
- For galvanized steel hardware, add the suffix -SH to each part number



### STL SERIES

CATALOG NUMBER	MAIN/RUN		TAP		HEX WRENCH SIZE (IN.)	BOLT HEIGHT (IN.)	WIDTH (W) (IN.)	LENGTH (L) (IN.)	STD. CTN. QTY.
	ACSR	AL/CU	ACSR	AL/CU					
PAA4	1/0-6	1/0 STR-6 SOL	1/0-6	1/0 STR-6 SOL	3/8	1.187	1.500	2.219	25
PAA5	1/0-8	1/0 STR-8 SOL	1/0-8	1/0 STR-8 SOL	3/8	1.496	1.496	1.240	25
PAA6	1/0-8	2/0 STR-8 SOL	1/0-8	2/0 STR-8 SOL	3/8	1.496	1.496	1.240	25
PAA12	4/0-2	4/0 STR-2 SOL	4/0-2	4/0 STR-2 SOL	1/2	2.000	2.000	2.250	12
PAA29	2-6	2 STR-6 SOL	2-6	2 STR-6 SOL	5/16	1.094	1.375	1.813	25
PAA129	4/0-2	4/0 STR-2 SOL	4/0-2	4/0 STR-2OL	1/2	2.250	2.000	2.000	12
PAE2121-9	2/0-6	2/0 STR-6 SOL	2/0-6	2/0 STR-6 SOL	3/8	2.000	1.625	1.375	25
PAE4141-9	4/0-4	4/0 STR-2 SOL	4/0-4	4/0 STR-2 SOL	3/8	2.000	2.000	1.375	12



# FLEXIBLE CABLE SLEEVE CONNECTORS

## FEATURES

- For use with fine-stranded and flexible wire.
- Made from copper tube and plated for corrosion resistance.
- Belled end allows for easy cable insertion.



## FS SERIES

CATALOG NUMBER	SLEEVE ID	COMM. CABLE SIZE	COMM. CABLE	APPROX. CONDUCTOR DIAMETER		DIESEL LOCOMOTIVE	LENGTH (L)	USE WITH MECHANICAL CONN. SIZE	STD. CTN. QTY.
				CLASS M WELDING	CLASS H WELDING				
FS008	0.180	8 AWG	0.146	0.162	0.167	0.140	0.4724	4 AWG	100
FS006	0.236	6 AWG	0.184	0.215	0.210	0.180	0.4724	4 AWG	100
FS004	0.291	4 AWG	0.232	0.269	0.266	0.240	0.4724	1/0 AWG	50
FS002	0.336	2 AWG	0.292	-	-	0.325	0.5906	1/0 AWG	50
FS001	0.415	2 AWG	-	0.337	0.335	-	0.7087	3/0 AWG	25
	-	1 AWG	0.332	0.376	0.378	0.390	-	-	-
FS010	0.500	1/0 AWG	0.373	0.423	0.424	0.420	0.8661	250 MCM	25
	-	2/0 AWG	0.419	-	0.477	0.460	-	-	-
FS020	0.579	2/0 AWG	-	0.508	-	-	0.9843	350 MCM	25
	-	3/0 AWG	0.470	-	0.536	0.565	-	-	-
FS030	0.657	3/0 AWG	-	0.576	-	-	1.1812	350 MCM	12
	-	4/0 AWG	0.528	-	0.601	0.590	-	-	-
FS040	0.738	4/0 AWG	-	0.645	-	0.660 (262.6)	1.2598	500 MCM	12
	-	250 MCM	0.575	0.713	0.653	-	-	-	-
FS350	0.798	300 MCM	0.630	0.768	0.716	0.720 (313.1)	-	-	-
	-	350 MCM	0.681	-	0.772	0.781 (313.7)	1.2598	500 MCM	12

# TRANSFORMER LUG KITS MECHANICAL SET-SCREW TYPES - ACCESSORIES

## FEATURES

- Terminal lugs are dual rated for use with both copper and aluminum cables.

## SPECIFICATIONS

- UL486B listed Wire Connector
- Temperature Rating: 90 °C
- Voltage: up to 35kV max
- AL9CU



### LK SERIES

CATALOG NUMBER	TRANSFORMER KVA SIZE	QTY	TERMINAL LUGS INCLUDED		HARDWARE INCLUDED		STD CTN QTY
			LUG TYPE	WIRE RANGE	QTY	BOLT SIZE (IN.)	
LK-1	15-37-1/2 1Ø	8	2T	2-14	8	1/4-20X3/4	1
	15-45-3Ø	4	250T	250 MCM-6	8	1/4-20X3/4	1
LK-2	50-75 1Ø	12	250T	250 MCM-6	8	1/4-20 x 3/4	1
	75-112-1/2 3Ø	12	250T	250 MCM-6	8	1/4-20 x 1 3/4	1
LK-3	100-167 1Ø	3	250T	250 MCM-6	3	1/4-20 x 3/4	1
	150-300 3Ø	22	600T	600 MCM-2	16	3/8-16 x 2	1
LK-4	500 3Ø	29	600T	600 MCM-2	18	3/8-16 x 2	1
LK-5	15-25 1Ø	7	OT	1/0-14	7	1/4-20 x 1 1/2	1
	15-37 1/2 3Ø	7	OT	1/0-14	7	1/4-20 x 1 1/2	1
LK-6	37 1/2-50 1Ø	7	250T	250 MCM-6	7	5/16-16 x 1 1/2	1
	45-75 3Ø	6	350T	350 MCM-6	7	5/16-16 x 1 1/2	1
	-	3	OT	1/0-14	3	1/4-20 x 1	1
LK-7	225 3Ø	6	2-350T	350 MCM-6	6	1/2-13 x 2	1
	-	6	350T	350 MCM-6	13	3/8-16 x 1 1/2	1
LK-8	225 3Ø	3	500T	500 MCM-4	7	3/8-16 x 2	1
	-	4	2-600T	600 MCM-2	7	3/8-16 x 2	1
LK-9	300 3Ø	3	2-350T	350 MCM-6	7	1/2-13 x 2	1
	-	12	500T	500 MCM-4	4	1/2-13 x 2 1/2	1
LK-10	400-500 3Ø	16	800T	800-300 MCM	11	1/2-13 x 2 1/2	1
	-	3	2-600T	600 MCM-2	11	1/2-13 x 2 1/2	1

# MAKING — the — CONNECTION



Scan for more  
information



**MECHANICAL CONNECTORS**

