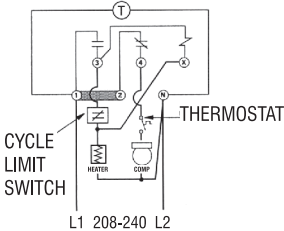


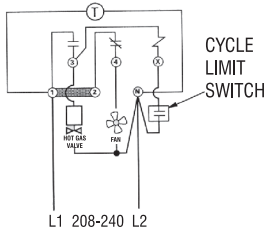
P/N S814521 SUPCO COMMERCIAL DEFROST CONTROL

ELECTRIC HEAT DEFROSTING



Normally closed thermostat used with defrost heater.
Wiring using 240V single phase line compressor voltage common to timer.

HOT GAS DEFROSTING



Wiring using 240V single phase line with compressor thermostat closed during defrost.

CAUTION RISK OF ELECTRICAL SHOCK HAZARD!

DISCONNECT ALL POWER AT MAIN PANEL BEFORE REMOVING THE INSULATOR. MORE THAN ONE DISCONNECT SWITCH MAY BE REQUIRED TO DE-ENERGIZE THE DEVICE FOR SERVICING. MAKE SURE TO REPLACE THE INSULATOR AFTER WIRING.

USE COPPER CONDUCTORS ONLY

SUPPLY CONNECTIONS USE THE GAUGE SPECIFIED, SUITABLE FOR 75°C (167°F).

MINIMUM GAUGE WIRE	MAXIMUM LOAD
8	40 AMPS
10	30 AMPS
12	20 AMPS
14	10 AMPS



INSTALLING AND OPERATING DIRECTIONS

PLACE THE START PINS IN THE OUTER (24 HOUR) DIAL AT THE TIME OF DAY THAT THE SWITCH CONTACTS ARE TO BE REVERSED FROM. THIS IS SHOWN BELOW WHEN THE DIAL PINS ARE OPPOSITE THE POINTER.

CAUTION: LEAVE AT LEAST 1 HOLE BETWEEN EACH ADJACENT PIN.
TO SET BACK UP DEFROST TERMINATION: PUSH DOWN AND ROTATE POINTER ON INSIDE (2 HOUR) DIAL UNTIL IT IS OPPOSITE THE DESIRED TIME.

TO SET THE TIME OF DAY: GRASP THE KNOB IN THE CENTER OF THE INNER (2 HOUR) DIAL AND ROTATE IT IN A COUNTER CLOCKWISE DIRECTION. THIS WILL REVOLVE THE OUTER DIAL. LINE UP THE CORRECT TIME OF DAY ON THE OUTER DIAL WITH THE TIME POINTER. **DO NOT TRY TO SET THE TIME CONTROL BY GRASPING THE OUTER DIAL. ROTATE THE INNER DIAL ONLY!**

TO REMOVE THE TIMER MOVEMENT FROM CASE: PRESS THE SPRING CLIP AT RIGHT CENTER OF CASE AND LIFT THE TIMER MOVEMENT OUT.

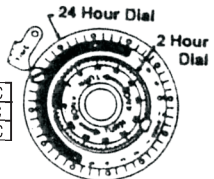
TO REPLACE THE TIMER MOVEMENT IN CASE: INSERT TABS ON THE LEFT SIDE OF THE TIME SWITCH PLATE INTO HOLES INSIDE OF THE CASE. PUSH DOWN AND SNAP INTO PLACE.

FOR REPLACEMENT OF THIS TIMER CONTACT
SUPCO @ 800 - 333 - 9125.

MAXIMUM CONTACT RATING

40 AMPS	NON - INDUCTIVE	208/240 VAC
2 HP		208/240 VAC
690 VA	PILOT DUTY	208/240 VAC

TIMING MOTOR: 208/240V 50 Hz



SEALED UNIT PARTS CO., INC.
PO BOX 21, 2230 LANDMARK PLACE, ALLENWOOD, NJ 08720 USA
Phone: 732-223-6644 • Fax: 732-223-1617

www.supco.com • info@supco.com Rev. 03052012