

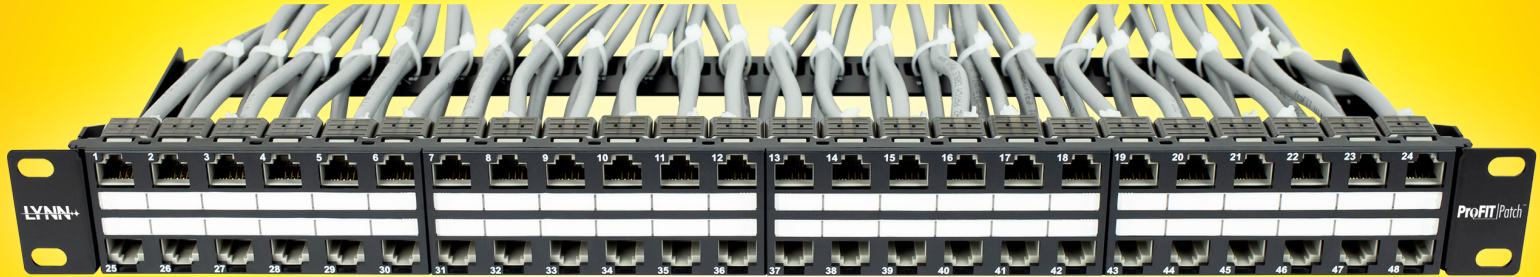
48 PORT 19" RACKMOUNT

Keystone Jack Panel



ProFIT Patch™

Premium Copper Panels



* Keystone jacks sold separately

P/N: PRO-CPP-BLANK-1U-48

Cable Management

Built-in rear cable management designed for hyperscale extreme density

Standard-Size Jacks

Designed for standard-size, non-proprietary keystone jacks

Port Labeling

Silk-screened labeling on front and back cable management for quick port identification. Removable port labeling strips for easy access.

Flush Fit

Keystone jacks fit flush into ports to protect them from damage



2022.04.03

Specifications

- 1.5 mm SPCC steel
- Dimensions: 19" x 1.75" x 6"
- Color: black
- Designed for standard size, non-proprietary keystone jacks
- 24 zip ties included

OPTIONAL ProFIT™ RAPID TERMINATION TOOL and KEYSTONE JACKS



OPTIONAL CABLE MANAGER



P/N: PRO-CBL-MGR-1U-5PR

- Fits any standard 19 inch rack and cabinet
- Heavy gauge 1.5mm metal with flexible, plastic D-rings
- Radius-edged D-rings to protect cable