

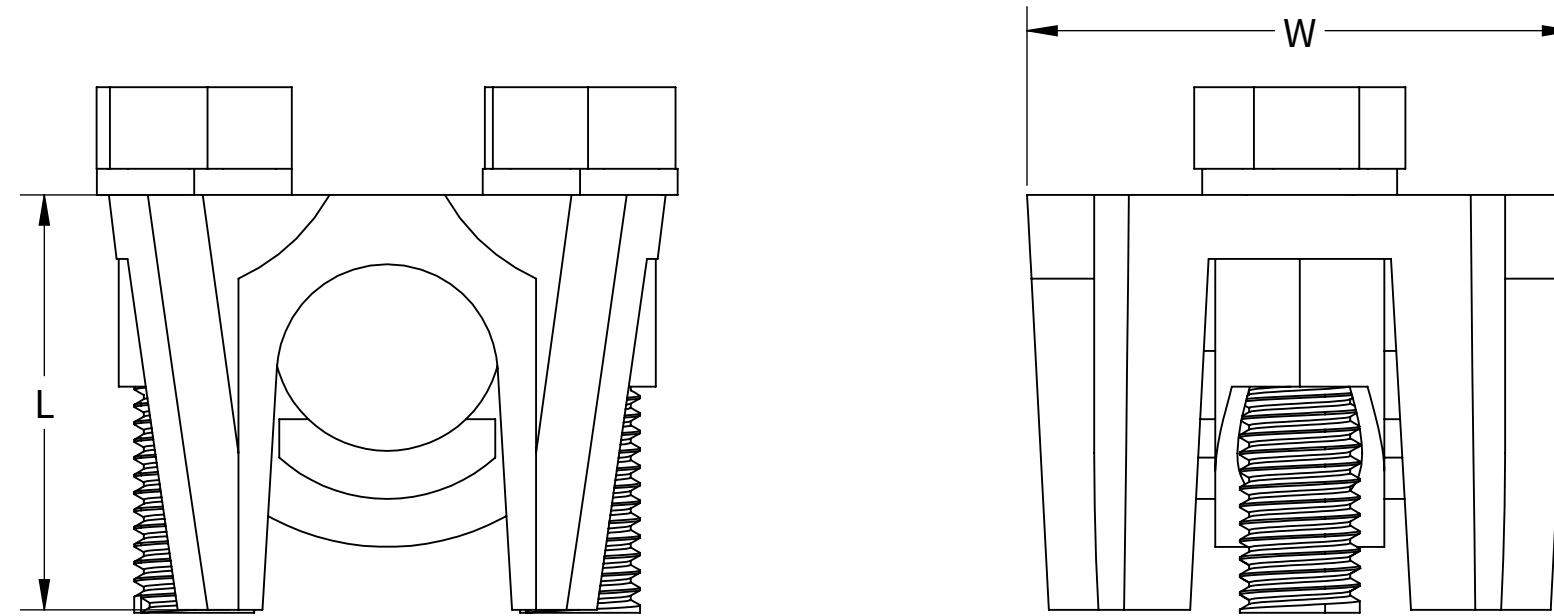
FEATURES:

1. Made from high strength bronze castings – assurance against stress corrosion and season cracking.
2. Designed for heavy-duty service connections.
3. The cap swivels to permit quick and easy installation of conductors.
4. Retaining rubber washer eliminates loose parts.
5. Silicon bronze hardware.
6. Flat back permits use as bus tap when used with longer bolts.
7. Units in Inches



PROGRAM:	SOLIDWORKS
UPDATED:	09/2024
SALES REV:	A
SIZE:	B (11x17)

TC1000: Two-Bolt Bronze for Copper to Copper



CAT. NO.	MAIN WIRE RANGE		TAP WIRE RANGE		WIDTH (W)	LENGTH (L)
	MAX.	MIN.	MAX.	MIN.		
TC1000	1000 MCM	750 MCM	1000 MCM	2 SOL	2.125	2.125

