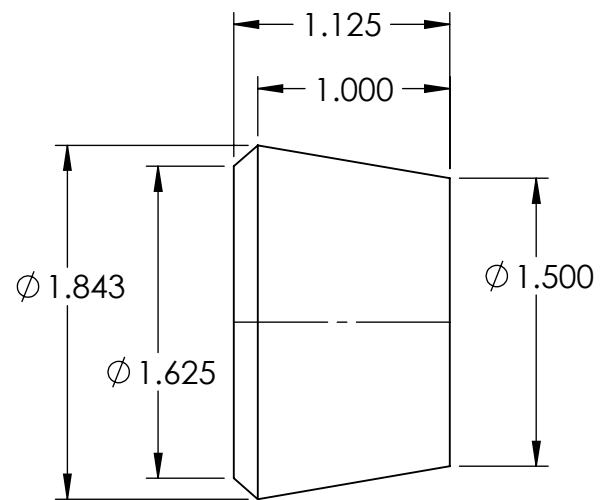


SECTION A-A



- NOTES:
1. FLASH TO BE HELD TO A MINIMUM AND MAY NOT WEB ACROSS HOLES.
 2. I.D. AND O.D. CONCENTRICITY .020.
 3. ALL OTHER DIMENSIONS ±.015.
 4. MATERIAL: BLACK NEOPRENE 50-60 DUROMETER

REV.	DATE	CHANGE	UNLESS OTHERWISE SPECIFIED:	NAME	DATE	REMKE INDUSTRIES 310 CHADDICK DR, WHEELING, IL. 60090	
A	7/30/02	DRAWING RELEASED	DIMENSIONS ARE IN INCHES	DRAWN	JCN	7/15	TITLE: BUSHING
B	7/16/15	REDRAWN	TOLERANCES:	CHECKED			SIZE DWG. NO. A SBF-5014
			FRACTIONAL ± 1/64	ENG APPR.			SCALE: 1:1
			ANGULAR: MACH ± 1° BEND ± 1°	MFG APPR.			SHEET 1 OF 1
			ONE PLACE DECIMAL ±.015	Q.A.			
			TWO PLACE DECIMAL ±.010	PROPRIETARY AND CONFIDENTIAL THE INFORMATION CONTAINED IN THIS DRAWING IS THE SOLE PROPERTY OF REMKE INDUSTRIES. ANY REPRODUCTION IN PART OR AS A WHOLE WITHOUT THE WRITTEN PERMISSION OF REMKE INDUSTRIES IS PROHIBITED.			
			THREE PLACE DECIMAL ±.005				
			INTERPRET GEOMETRIC TOLERANCING PER:				
			MATERIAL				
			SEE NOTE				
			FINISH				
			DO NOT SCALE DRAWING				