

SILENCER_{CO}

HARVESTER

FIELD MANUAL



Warning

Failure to follow installation and maintenance instructions detailed in this manual may result in serious personal injury and damage to the firearm. Do not attempt to use this product unless you have specific training and experience in the use of firearms.

Because suppressed firearms make less noise than unsuppressed firearms, it is easy to forget that they are still firearms and capable of causing bodily injury and

property damage. Remember, a suppressed firearm should be treated with the same safety and caution as an unsuppressed firearm.

Firearm silencers are user-attached firearm muzzle devices, and as such are subject to improper attachment issues unless the procedures outlined in this manual are followed precisely.

Before installing the silencer from the host firearm, be sure that the firearm is unloaded and the action is opened so that the firearm is visibly clear of any ammunition. If you are at all unsure as to the proper procedures to ensure that your firearm is unloaded, please consult your firearm user's manual/instructions and/or contact a properly licensed dealer or the manufacturer of your firearm.

Check the fit between barrel and silencer before firing! The thread mount must be fully shouldered on the barrel. There should be no visible gap between the barrel shoulder and the face of the silencer thread mount. If there is any gap DO NOT fire the host with the silencer attached. Poor accuracy and product damage may result if the silencer is not fully shouldered.

CONTINUED ON NEXT PAGE

Warning

Silencers must be free of obstructions such as mud, dirt, etc. DO NOT attempt to shoot through an obstructed silencer.

The silencer is designed to suppress the initial muzzle blast and subsequent projectile de-corking pressure. The silencer doesn't contact or otherwise interact with the bullet, allowing the projectile to travel at its default speed.

Because of this, a sonic crack may be produced by the projectile as it breaks the sound barrier.

Depending on the geography of the area, the sonic crack may vary in volume. This is solely a function of the projectile breaking the sound barrier and is not related to product performance.

To ensure your silencer remains secure while firing, it is of the utmost importance that you frequently verify the silencer is securely tightened onto the barrel. We recommend checking the security of the attachment after 30 discharges of the firearm.

Before removing the silencer from the host firearm, be sure that the firearm is unloaded and the action is opened so

that it is visibly clear of any ammunition. When removing the silencer, use extreme caution as it may be hot to the touch after firing. Use gloves to avoid burns or other injuries. Once the silencer is removed from the host firearm, SilencerCo recommends using a thread protector or other muzzle device to protect the muzzle threads and crown, during storage or transport.

Overview & Product Specs

Designed to improve any hunter's game, the Harvester series is lightweight and fully welded. Both models feature the recoil-reducing Anchor Brake for quick target reacquisition and follow-up shots.

Harvester 300 is the answer for any sportsman. At only 11 oz, it's the lightest direct thread .300 Win Mag silencer in

existence. A variety of thread mounts make the Harvester 300 compatible with most rifles from 5.56mm to 300 WM. Track game without unnecessary weight, and make the shot the first time, every time.

Harvester 338 takes calibers 5.56mm to .338 LM with ease. Mounting options range from a variety of thread options,

muzzle devices, the fast-attach ASR mount. Fully welded to ensure reliability with even the largest calibers, the Harvester 338 is the answer for long-range shooters.

The Harvesters include a multi-tool for installation and removal of the thread mounts to the silencer.

Overview & Product Specs



BRAVO MULTITOOL

INCLUDED WITH HARVESTER 338



CHARLIE MULTITOOL

INCLUDED WITH HARVESTER 300



HARVESTER 338

CALIBERS

5.56 NATO to 338 Lapua Mag

LENGTH

10.0"

WEIGHT

22.0 OZ

DIAMETER

1.82"

MUZZLE AVERAGE

308 WIN: 133.0 dB

300 WM: 134.2 dB

338 LM: 136.6 dB



HARVESTER 300

CALIBERS

5.56 NATO to 300 WM

LENGTH

8.8"

WEIGHT

11.0 OZ

DIAMETER

1.37"

MUZZLE AVERAGE

5.56 NATO: 134.9 dB

308 WIN: 136.4 dB

300 WM: 138.3 dB

Assembly & Modularity

MOUNTING OPTIONS

For optimum performance and to avoid damage to your silencer, SilencerCo recommends using only SilencerCo approved mounts and accessories.

Whether you prefer the simple, shorter nature of a direct thread setup, or the quick attach/detach features of the ASR Mount, you should take care to ensure that the Harvester is mounted securely to your firearm before firing.

SilencerCo offers mounts in all of the popular barrel thread patterns. Users must ensure they are using the proper mounts that match their barrel threads and that there is a proper shoulder for the mount to seat against. These instructions will help to prevent the problems and dangers that can arise from improper installation.

Once you decide on a method of attachment, it is recommended to use Rocksett™ or another high-temp

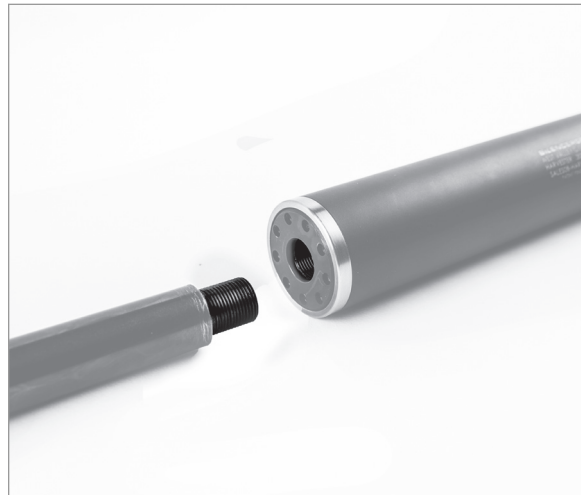
threadlocker to make it semi-permanent and avoid having the suppressor separate from the mount. To remove the mount once one of these is applied, consult the thread locker manufacturer's instructions before attempting removal.

The Harvester 300 and Harvester Big Bore 338 utilize different thread sizes for the mounts; these mounts are not interchangeable between them. The Harvester 300 utilizes the Alpha style mount. The Harvester Big Bore utilizes the Bravo style mount.

Assembly & Modularity

DIRECT THREAD MOUNT

Hold the Harvester body with a firm grip and start threading in the mount by hand to avoid cross-threading. Use the three pegs of either the appropriate multi-tool (included with silencer) to tighten the mount to the Harvester body until seated inside the internal shoulder of the silencer body; the mount will appear slightly recessed within the silencer body. To remove, perform steps in reverse order.



ATTACH SILENCER TO FIREARM

After confirming that your firearm is unloaded, place the direct threaded mount of the Harvester in line with the threads of the barrel. Taking care not to cross-thread, screw the silencer onto the barrel until it is firmly secured and no additional barrel threading is visible. Hand tighten only. To remove, perform steps in reverse order.

CONTINUED ON NEXT PAGE

Assembly & Modularity

When attempting to remove the Harvester from the barrel, there is a possibility that the mount may stay threaded onto the barrel, causing it to then unthread from the silencer body. The Harvester thread mount features internal wrench flats for this situation. Continue unthreading the Harvester to expose the front side of the thread mount; with the mount completely separated from the silencer body, seat the appropriately-sized open end wrench (wrench sizes will vary by thread mount size) onto the front side of the thread mount and remove. Reinstall the thread mount into the Harvester following the installation instructions listed above.



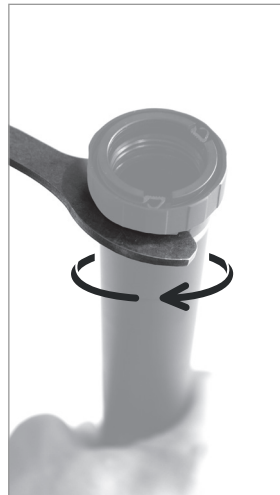
ASR MOUNT

The ASR Mount is a proprietary quick-attach/detach mounting system, and as such requires a compatible muzzle device (muzzle brake or flash hider). SilencerCo recommends the use of a shim kit if any indexing of the mount is required (included with muzzle brakes). Crush washers are NOT recommended as they do not crush uniformly and WILL cause improper mounting and baffle strikes. For proper alignment, it is essential that the muzzle device seats against a 90° barrel shoulder.

CONTINUED ON NEXT PAGE

Assembly & Modularity

Thread the ASR Mount assembly into the Harvester silencer body by hand, taking care not to cross-thread. Hold the Harvester body with a firm grip. Using the tool included with the ASR Mount to grasp the notches in the base of the ASR mount, tighten the mount. Torque to approximately 25-35 ft-lbs.



MUZZLE DEVICE

Remove your existing muzzle device. Remove the crush washer and/or any other thread spacers from barrel threads. Clean the threads and shouldering surface of the barrel. Install the ASR muzzle device by threading it onto the barrel. Use the provided shim kit to ensure proper muzzle brake alignment. Tighten onto barrel using a 3/4" open end wrench on the wrench flats at the rear of the brake. Use of Rocksett™ or another high-temp threadlocker is recommended to secure the muzzle device. The flash hider/muzzle brake should be torqued to 20-30 ft-lbs.

CONTINUED ON NEXT PAGE

Assembly & Modularity

Verify the ASR collar is in the unlocked position before installing. Install the Harvester by sliding the back end over the muzzle device, then screw the silencer onto the muzzle device until it stops (hand tight, approximately 8-15 ft-lbs.). Rotate the ASR collar to the locked position. To remove, perform steps in reverse order.



ANCHOR BRAKE

The Anchor Brake is designed to allow optimal recoil and sound reduction.

Maintenance

The Harvester typically requires limited maintenance. Mounts should periodically be cleaned with any standard gun cleaning solvent and a brush to remove any carbon or fouling. If necessary, run a cleaning brush through the bore to remove any light fouling of the silencer. Do not run cleaning patches through the bore as the patches might become lodged in the silencer and cause damage upon firing.

CAUTION *Always read the warning label on any cleaner or solvent, and remember that virtually all solvents are inherently dangerous and potentially toxic. Always use adequate ventilation and both skin and eye protection when using solvents.*

Lifetime Warranty

We proudly stand behind the quality of our products with a lifetime warranty, no matter what—even if it's not a product defect. Our 48 hour repair turnaround even warranties stupid... once. If you experience any issues, please refer to the SUPPORT section of our website or contact our Customer Service team at **info@silencerco.com** or **801.417.5384**.

If your silencer has a defect in manufacturing or materials, there will be no charges for service or replacement through our SilencerCo facility. If we determine that a claim is not covered under warranty, a discounted replacement option will be granted.

This warranty does not cover damage to the silencer or host firearm resulting from careless or irresponsible handling, adjustments or modifications to design, negligence, or other abuse. SilencerCo assumes no liability for unsafe or illegal use of the silencer by its purchaser or any other user that comes in contact with the product after purchase. SilencerCo assumes no responsibility for physical injury or property damage resulting from careless or irresponsible handling or by any use contrary to the recommendations, warnings, and cautions generally listed in this manual. SilencerCo does not cover damage to the silencer or host firearm resulting from improper hand-loaded or reloaded ammunition or defective ammunition.

Register Your SilencerCo Product Online
To Activate Your Lifetime Warranty

SILENCERCO.COM/REGISTER



Protect Your Rights | Protect Your Hearing

The American Suppressor Association is fighting to protect and expand your silencer rights. Join the fight today!

AMERICANSUPPRESSORASSOCIATION.COM

**FOR QUESTIONS, CONTACT OUR CUSTOMER SERVICE TEAM
AT 801.417.5384 OR INFO@SILENCERCO.COM**

© 2019 SilencerCo, LLC. All Rights Reserved. The contents of this publication may not be reproduced in any form or by any means in whole or in part without the prior written permission of the copyright owner.

DESIGNED &
MANUFACTURED
IN THE USA