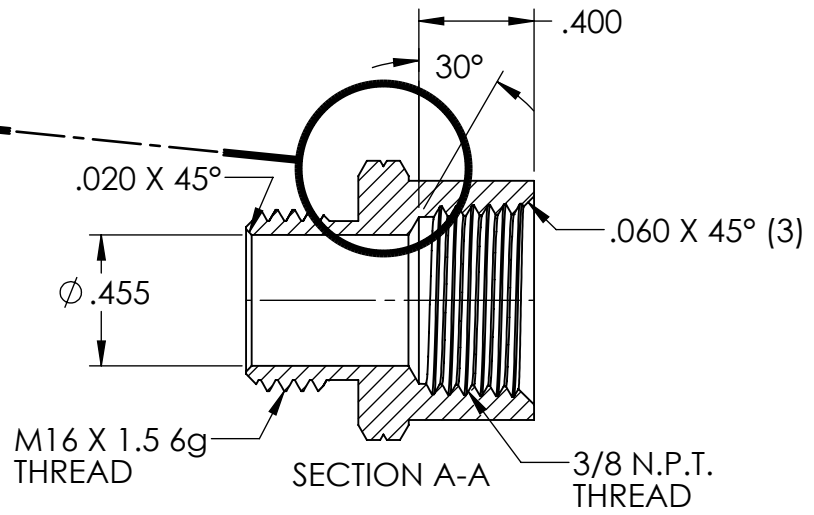
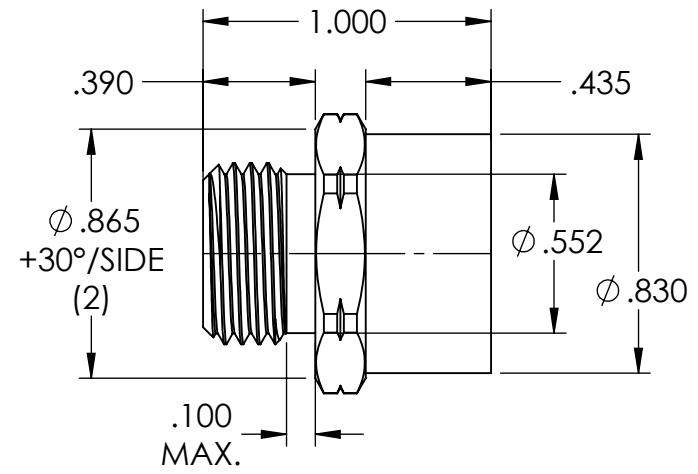


DETAIL B  
SCALE 4 : 1



- NOTES:  
 1.) PART A IS PLATED ELECTROLESS NICKEL .0001 MIN-.0003 MAX.  
 2.) PART UP IS UNPLATED  
 3.) BREAK ALL SHARP CORNERS  
 4.) REF. BAR-21 (7/8" HEX X .455 I.D.)

REV.	DATE	CHANGE	UNLESS OTHERWISE SPECIFIED:	NAME	DATE	<b>REMKE</b> <b>REMKE INDUSTRIES</b> 310 CHADDICK DR, WHEELING, IL. 60090	
A	2/28/02	DRAWING RELEASED C.V.	DIMENSIONS ARE IN INCHES	DRAWN	JCN 7/15	TITLE:	
B	3/12/02	ADDED "F" TO PICTORIAL	TOLERANCES:	CHECKED		<b>ADAPTER</b>	
C	7/21/15	REDRAWN	FRACTIONAL ± 1/64	ENG APPR.		SIZE	DWG. NO.
			ANGULAR: MACH ± 1° BEND ± 1°	MFG APPR.		<b>A</b>	<b>RAM-16M37F-A</b>
			ONE PLACE DECIMAL ± .015	Q.A.		SCALE: 1.5:1	SHEET 1 OF 1
			TWO PLACE DECIMAL ± .010	<b>PROPRIETARY AND CONFIDENTIAL</b> THE INFORMATION CONTAINED IN THIS DRAWING IS THE SOLE PROPERTY OF REMKE INDUSTRIES. ANY REPRODUCTION IN PART OR AS A WHOLE WITHOUT THE WRITTEN PERMISSION OF REMKE INDUSTRIES IS PROHIBITED.			
			THREE PLACE DECIMAL ± .005				
			INTERPRET GEOMETRIC TOLERANCING PER:				
			MATERIAL				
			<b>ALUMINUM</b>				
			FINISH				
			<b>NICKEL PLATED</b>				
			DO NOT SCALE DRAWING				

5 4 3 2 1