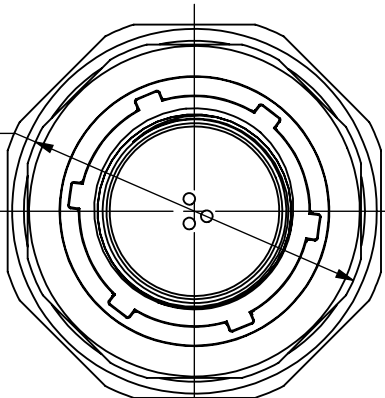
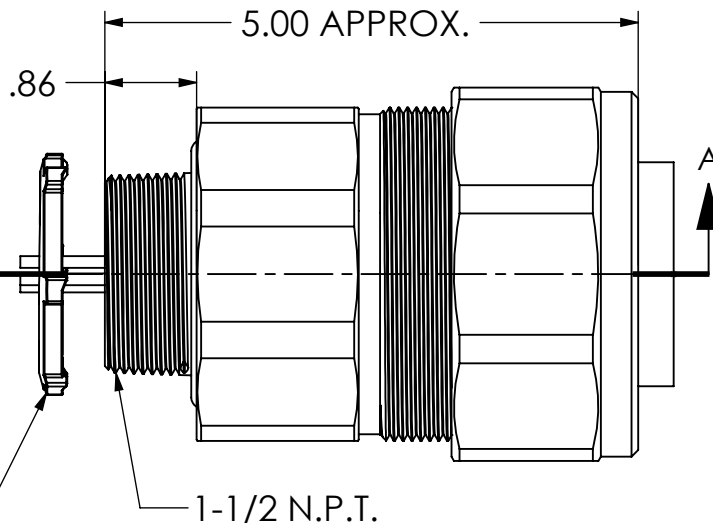


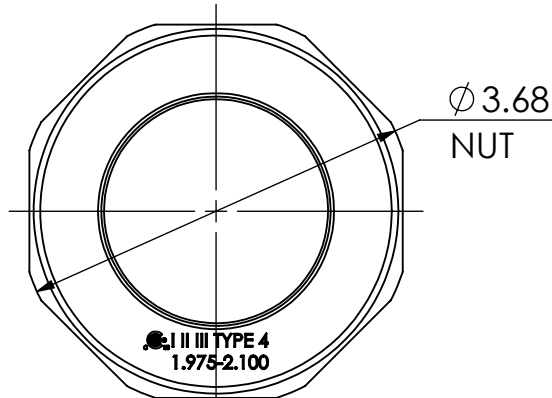
Ø 3.25  
BODY



LOCK NUT  
OPTIONAL  
ADD: L



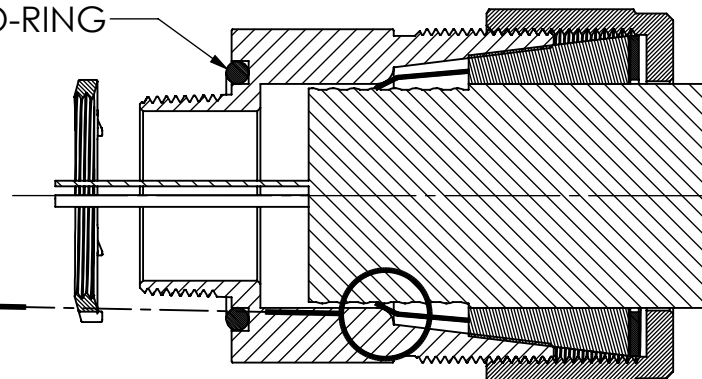
1-1/2 N.P.T.



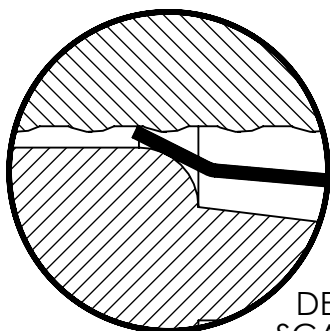
Ø 3.68  
NUT

1.975-2.100  
TYPE 4

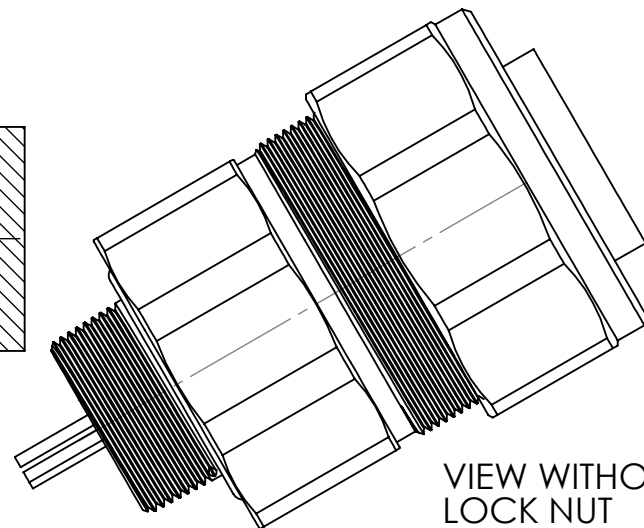
O-RING



SECTION A-A




DETAIL B  
SCALE 2 : 1



VIEW WITHOUT  
LOCK NUT



REV.	DATE	CHANGE	UNLESS OTHERWISE SPECIFIED:	NAME	DATE		
A	7/30/14	DRAWING RELEASED	DIMENSIONS ARE IN INCHES TOLERANCES: FRACTIONAL $\pm 1/64$ ANGULAR: MACH $\pm 1^\circ$ BEND $\pm 1^\circ$ ONE PLACE DECIMAL $\pm .015$ TWO PLACE DECIMAL $\pm .010$ THREE PLACE DECIMAL $\pm .005$	DRAWN JCN	7/14		
			INTERPRET GEOMETRIC TOLERANCING PER:	CHECKED		TITLE:	
			MATERIAL	ENG APPR.			
			FINISH	MFG APPR.		SIZE DWG. NO. <b>A RTKSS-150-13</b>	
			DO NOT SCALE DRAWING	Q.A.			
				PROPRIETARY AND CONFIDENTIAL THE INFORMATION CONTAINED IN THIS DRAWING IS THE SOLE PROPERTY OF REMKE INDUSTRIES. ANY REPRODUCTION IN PART OR AS A WHOLE WITHOUT THE WRITTEN PERMISSION OF REMKE INDUSTRIES IS PROHIBITED.		SCALE: 1:1.8	SHEET 1 OF 1