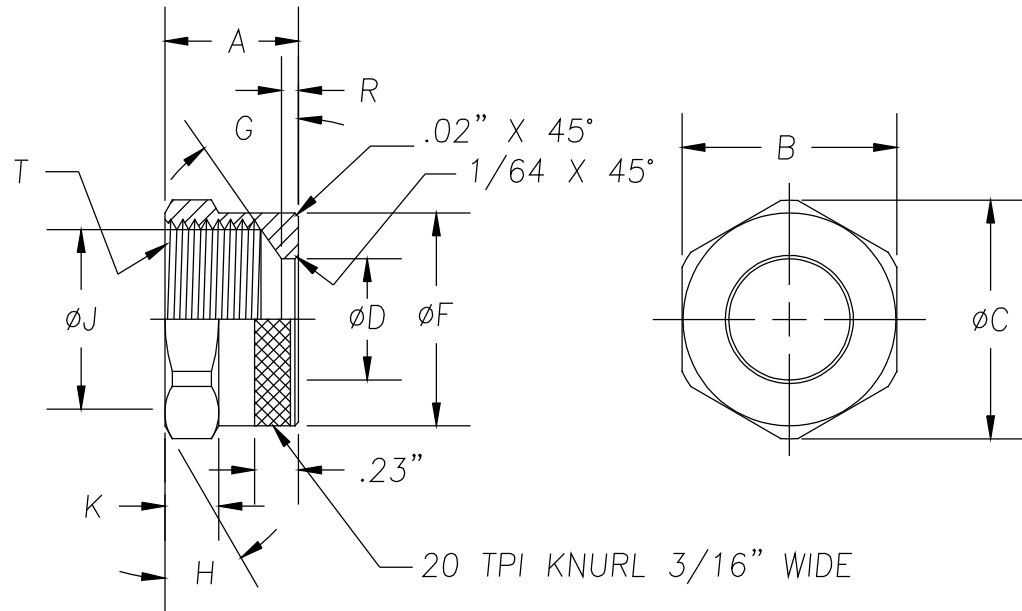
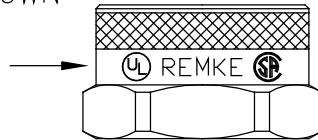


DIMENSIONS

- A .700"
- B 1-1/8" HEX
- C ϕ 1.25"
- D ϕ .635"
- F ϕ 1.110" BEFORE KNURL
- * G 35 DEG.
- H 30° CHAMF. TO DIA. 1.110"
(TYP. BOTH SIDES OF HEX)
- * J ϕ .940"
- K .282"
- * R .090"
- * T 1"-16 UN 2B THREAD



NOTE: IMPRINT REMKE AS SHOWN
CENTERED BETWEEN HEX AND KNURL
CHARACTER HEIGHT TO BE 7/64"



NOTES:

- 1.) PART TO BE FREE OF BURRS AND SHARP CORNERS PARTICULARLY @ BORE "D"
- 2.) * INDICATES CRITICAL INSPECTION DIMENSIONS

REV.	DATE	CHANGE	
A	4/6/95	CHANGE DIM "G", ELIMINATE L & M	UNLESS OTHERWISE SPECIFIED 3-PLC. DIM. +/-.005 2-PLC. DIM. +/-.010 1-PLC. DIM. +/-.015 FRACTIONAL +/-.1/64 ANGULAR +/-.1°
B	3/6/98	CHANGED TO MACHINED BAR STOCK	
C	1/27/10	ADDED IMPRINTING INFO AND REDRAWN	

REMKE INDUSTRIES
Wheeling, Illinois 60090

SCALE: FULL
MATERIAL: 6462 T6511
FINISH: MACHINED NATURAL
PART NAME: NUT
PART NUMBER: RSR-100-N
DRAWING DATE: 1/27/10 C.V.