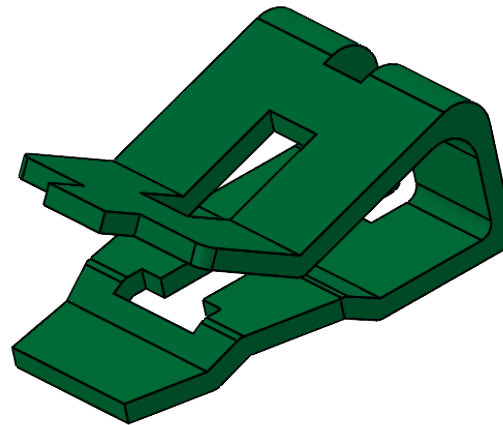
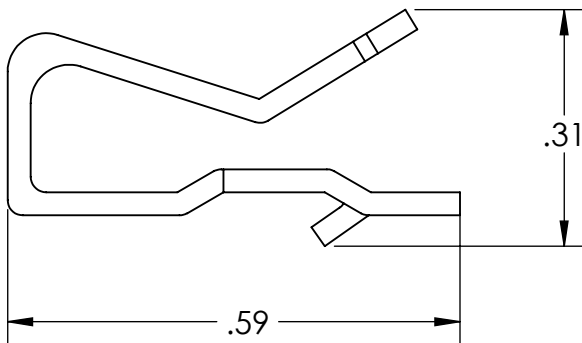
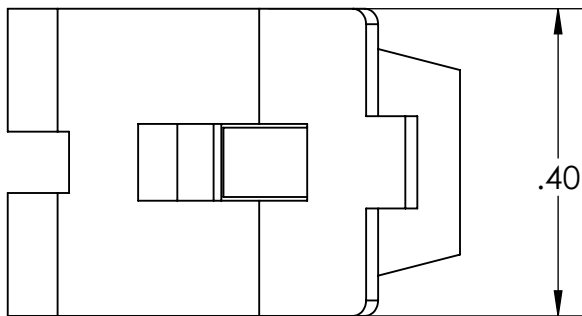


<b>PROGRAM:</b>	SOLIDWORKS
<b>UPDATED:</b>	11/19/2025
<b>SALES REV:</b>	A
<b>SIZE:</b>	A (8.5x11) (IN)



### FEATURES:

1. Material: Carbon Steel with surface coated in Green Zinc
2. For #14-#12 AWG solid wire
3. Use grounding clips to attach copper ground wires to the metal wall of an electrical junction box
4. Do not reuse