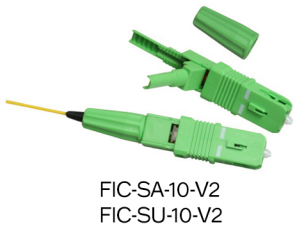
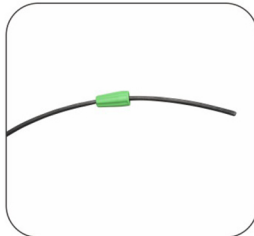


Tools Needed



Miller Trip-hole stripper	Fiber Cleaver	Kevlar scissors	Visual Fault locator	Bow Type Drop-cable stripper	Alcohol Wipes	Ruler	Black Marker

3mm Drop Cable Termination



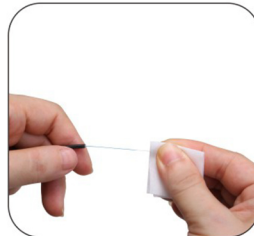
1. Insert 3mm boot on cable.



2. Remove 35mm of outer cable jacket using drop cable stripper/gauge.



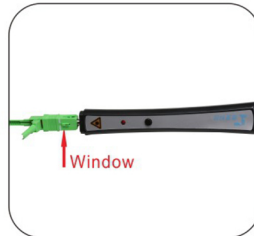
3. Measure, mark and remove 33mm of all remaining coatings to expose the bare fiber.



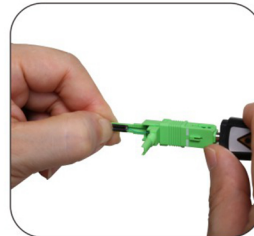
4. Clean with alcohol wipe until coating is removed. Cut and remove any kevlar if present in the cable.



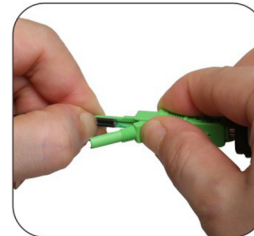
5. Set your fiber cleaver to 35mm and cleave the fiber. Refer to Figure 1.



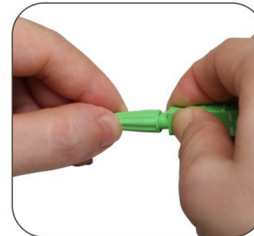
6. Insert the connector into Visual Fault Locator. Turn on the locator.



7. Insert the fiber into the connector until a slight bend is made. The red light in the window will dim when a connection is made. Refer to Figure 2.



8. Lock the handle. Keep the fiber fixed and maintain the bend.



9. Slide boot(s) up toward the connector then screw on completely.



10. The assembly is complete.



Figure 1

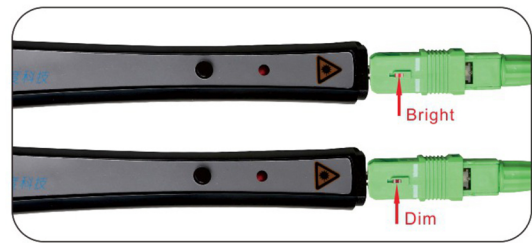
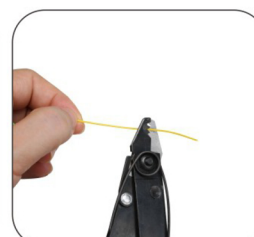


Figure 2

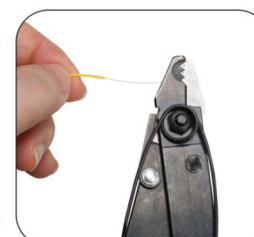
900µm Cable Termination



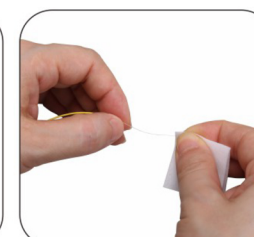
1. Insert 3mm boot. Next insert 900µm rubber boot.



2. Measure, mark and remove 50mm of 900µm jacket using fiber stripper.



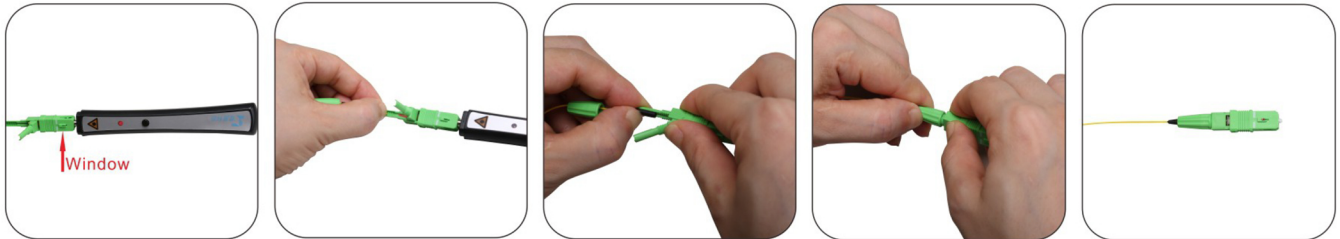
3. Measure, mark and remove 33mm of all remaining coatings to expose the bare fiber.



4. Clean with alcohol wipe until coating is removed.



5. Set your fiber cleaver to 35mm and cleave the fiber. Refer to Figure 3.



6. Insert the connector into Visual Fault Locator. Turn on the locator.

7. Insert the fiber into the connector until a slight bend is made. The red light in the window will dim when a connection is made. Refer to Figure 4.

8. Lock the handle. Keep the fiber fixed and maintain the bend.

9. Slide boot(s) up toward the connector then screw on completely.

10. The assembly is complete.

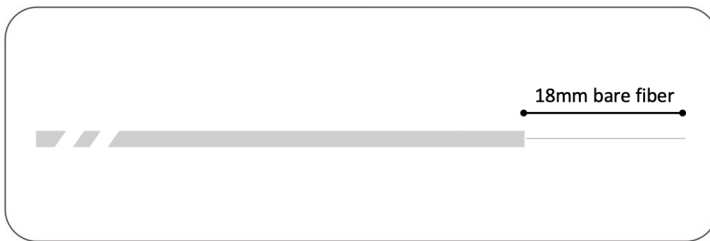


Figure 3



Figure 4

2mm / 3mm Indoor Cable Termination



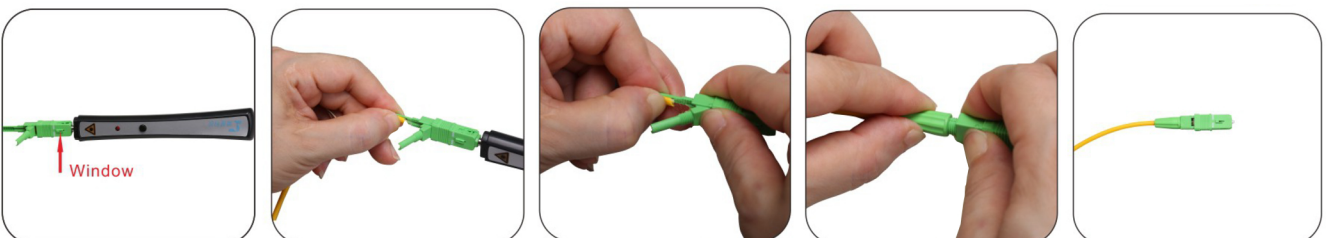
1. Insert 3mm boot on cable. If using 2mm cable also insert 2mm boot.

2. Measure, mark and remove 50mm of outer cable jacket using fiber stripper.

3. Measure, mark and remove 33mm of all remaining coatings to expose the bare fiber.

4. Clean with alcohol wipe until coating is removed. Cut and remove excess kevlar.

5. Set your fiber cleaver to 35mm and cleave the fiber. Refer to Figure 5.



6. Insert the connector into Visual Fault Locator. Turn on the locator.

7. Insert the fiber into the connector until a slight bend is made. The red light in the window will dim when a connection is made. Refer to Figure 6.

8. Lock the handle. Keep the fiber fixed and maintain the bend.

9. Slide boot(s) up toward the connector then screw on completely.

10. The assembly is complete.

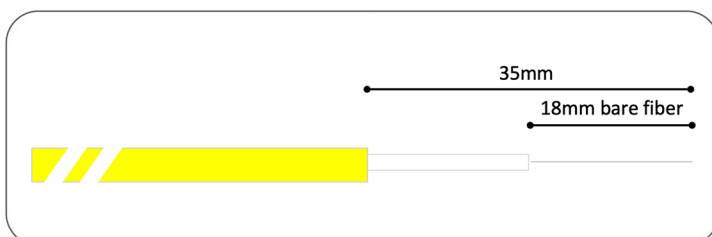


Figure 5



Figure 6