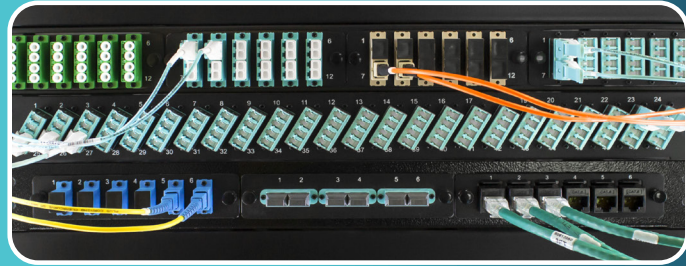




- Flexible** — Supports a variety of cable patching needs
- Clear Numbering** — Silkscreened port numbers for easy identification
- Easy to use** — Low profile for cost-effective patching



- Insertion Loss (dB): 0.03 – 0.01(SM), 0.04 – 0.02(MM)
- Operation Temperature: -40 – +85
- Over 500 matings
- Flammability: UL94 V-0 Grade
- RoHS compliance 2011/65/EU
- Meet GR-326-CORE
- All Single Mode - Zirconium Sleeves
- All Multimode - Phosphorous Bronze
- SC and LC Choice are one-piece adapters

### LGX Bulkhead

- 1U empty modular bulkhead
- Accepts up to (3) LGX size adapter plates or cassettes
- 19" rack mount



FPP-03-R1-24

### HDA Bulkhead

- 1U empty modular bulkhead
- Accepts up to (4) HDA/Panduit size adapter plates or cassettes
- 19" rack mount



FPP-04H-R1-14

### 48-port Fiber Bulkhead

- 1U pre-populated bulkhead
- Automatic internal dust shutters (LC only)
- 19" rack mount



Available in the following pass-thru configurations:

- FP-48LL-AQ (48-LC duplex)
- FP-48LL-BE (48-LC duplex)
- FP-48LL-SM (48-LC duplex)
- FP-48LL-SMG (48-LC duplex)
- FP-48MM-AQ (48-MTP<sup>®</sup>/MPO)
- FP-48MM-SM (48-MTP<sup>®</sup>/MPO)



### 36-port Fiber Bulkhead

- 1U pre-populated bulkhead
- Automatic internal dust shutters (LC only)
- 19" rack mount



Available in the following pass-thru configurations:

- FP-36LL-AQ (36-LC duplex)
- FP-36LL-BE (36-LC duplex)
- FP-36LL-SM (36-LC duplex)
- FP-36LL-SMG (36-LC duplex)
- FP-36MM-AQ (36-MTP<sup>®</sup>/MPO)
- FP-36MM-SM (36-MTP<sup>®</sup>/MPO)
- FP-36SSS-AQ (36-SC simplex)
- FP-36SSS-BE (36-SC simplex)
- FP-36SSS-SM (36-SC simplex)
- FP-36SSS-SMG (36-SC simplex)



### 24-port Fiber Bulkhead

- 1U pre-populated bulkhead
- Automatic internal dust shutters (LC only)
- 19" rack mount



Available in the following pass-thru configurations:

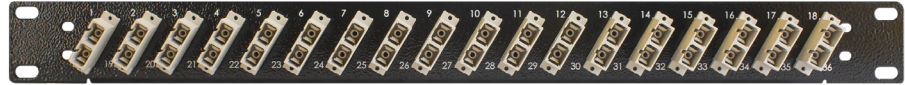
- FP-24LL-AQ (24-LC duplex)
- FP-24LL-BE (24-LC duplex)
- FP-24LL-SM (24-LC duplex)
- FP-24LL-SMG (24-LC duplex)

- FP-24MM-AQ (24-MTP®/MPO)
- FP-24MM-SM (24-MTP®/MPO)

- FP-24SSS-AQ (24-SC simplex)
- FP-24SSS-BE (24-SC simplex)
- FP-24SSS-SM (24-SC simplex)
- FP-24SSS-SMG (24-SC simplex)

### 18-port Fiber Bulkhead

- 1U pre-populated bulkhead
- 19" rack mount



Available in the following pass-thru configurations:

- FP-18SS-AQ (18-SC duplex)
- FP-18SS-BE (18-SC duplex)
- FP-18SS-SM (18-SC duplex)
- FP-18SS-SMG (18-SC duplex)

## OPTIONAL ACCESSORIES

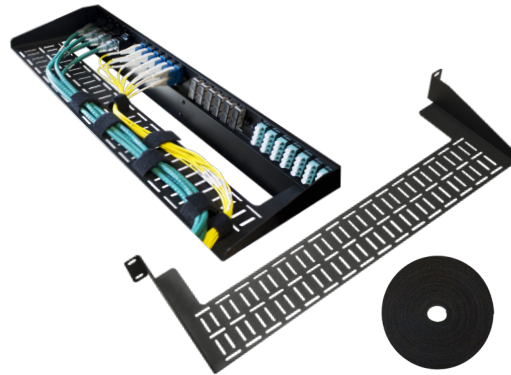
### CBL-MGR-1U-2

- Black 1U rackmount horizontal cable manager
- Finger duct style w/covers
- 2" depth
- Cable capacity (at 50% fill): 24 CAT6 cables, 48-28awg copper or 48 duplex fibers



### CBL-MGR-1U-SHELF

- Sturdy and reliable construction
- Versatile
- 6" depth, 19" width
- Promotes high bend radius
- 1U rackmount cable lacing shelf
- Secures rear cable connections
- Provides multiple velcro lacing positions
- Compatible with all LYNN 1U bulkheads



\* Velcro and plastic ties are included

### MET-1U-UM

- Universal ring manager
- 3" deep x 1U
- Can be mounted in 8 different positions on any rack
- Cable capacity (at 50% fill): 30 CAT6 cables, 60-28awg copper or 60 duplex fibers



### MET-1U-SM

- Side cable managers for patch panels
- 1U high x 2" wide x 3" deep
- Fits in 24" or wider cabinets
- Plastic D-rings support and secure side entry of patch cables
- Saves RU space by eliminating the need for horizontal cable managers
- Compatible with all LYNN enclosures/bulkheads



### TCS-PA2319001BK1

- 23" to 19" rack mount adapter/reducer
- Set of 2

