

TORK®

5401A

E360269



LISTED
INDUSTRIAL CONTROL EQUIPMENT
469D

SINGLE CONTACTOR UNIT ELECTRICALLY HELD

COIL: 120VAC @ 60Hz

6VA Holding/seal; 60VA inrush

CONTACT RATING PER POLE

VAC	FLA	LRA	Motor Load (1Ph)	Motor Load (3Ph)
120	40	-	3Hp	-
240	40	240	7.5Hp	10Hp
277	40	-	-	-
480	40	200	-	20Hp

TUNGSTEN RATING 30A @ 120Vac 1 Phase
BALLAST RATING 40A @ 120/277Vac 1 Phase
LED RATING 40A @ 120/277Vac 1 Phase

WARNING

PREVENT ELECTROCUTION
DISCONNECT ALL SUPPLY CONNECTIONS BEFORE
SERVICING

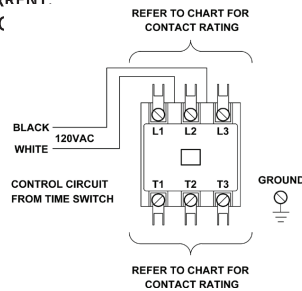
USE COPPER CONDUCTORS ONLY
WITH A MINIMUM RATING OF 75 C.

ADVERTISSEMENT

ÉVITEZ L'ÉLECTROCUTION
DÉCONNECTEZ TOUS LES RACCORDEMENTS
D'ALIMENTATION AVANT DE RÉPARER L'APPAREIL.

UTILISEZ UNIQUEMENT
DES CONDUCTEURS EN
CUIVRE RÉSISTANT À DES
TEMPÉRATURES DE 75 C ET PLUS.

SHORT CIRCUIT CURRENT:
5ka RMS SYMMETRIC
600V MAXIMUM



INSTALLATION INSTRUCTIONS

Lockout power at main panel before initial wiring or service of this device or any equipment connected to it. More than one disconnect point may be required. Fasten enclosure to mounting surface using the mounting holes provided. Connect in accordance with national and local electrical codes. Minimum 25 in. lbs torque required at the terminals to ensure proper connections. Do not exceed the rating of this device, and current capacity of conductors. Bonding between conduit connection is not automatic and must be provided as part of the installation. The enclosure must be properly grounded. Enclosure type: NEMA Type 1. Panel is not intended for use with industrial machinery. The contactor will open and close as scheduled by the time switch.

Scan with mobile device for additional information



FOR TECHNICAL SUPPORT:
SOUTIEN TECHNIQUE:
PARA COMUNICARSE CON
EL SERVICIO TÉCNICO:
888.500.4598 LI-581(G)



NSI Industries
800.321.5847
nsiindustries.com

NSI Industries, LLC
DOOR LABEL
p/n 5401A LI-581(G)
3.5" x 7.5"
1/0 (BLACK)
01/2025