

# 2RU Premium Fiber Patch Panel



2022.11.03



P/N: FPP-06-R2-04  
\* Available FULLY LOADED



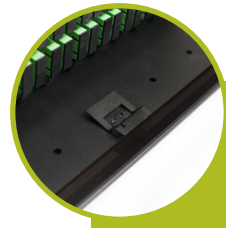
**Non-captive Mounting Ears** - Preinstall screws in rack, simply place rack on screws and tighten.



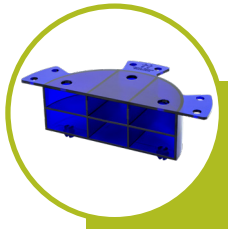
**Nylon Fiber Manager Loops** - Additional locations for more cable management options. Strong nylon construction with smooth rounded corners. Stress free fiber entry. Snaps into place securely, no screws. Includes 10.



**Optional Locking Kit (FPP-LOCK-KIT)** - Kit includes locks for front and rear. Easy to add and place key kit in knockouts.



**E-Z Slide™ Tray Latch** - Slides out without snags. No push/pull mechanism in the way.



**Blue Half-moon Cable Managers (FPP-CBL-MGR-KIT)** - No screws, snaps into place, stackable (first in industry). Includes 2.



**Optional Bulk Cable Protection (FPP-BLK-PRO)** - Holes designed for zip ties and Velcro®.

\* All LEXAN™ SABIC Global product names are trademarks or registered trademarks of SABIC Global

## More Features


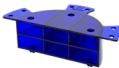


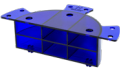

- Hinged front and rear doors
- Tinted LEXAN™ front cover
- Removable top panel and front faceplate
- Non-captive side and rear entries for trunks
- Standard 19" - 23" rack mountable unit

## Specifications

- Dimensions: standard 2RU height x 19" W x 14" D
- Material: 16AWG steel
- Coating: electrostatic polyester powder coat black paint

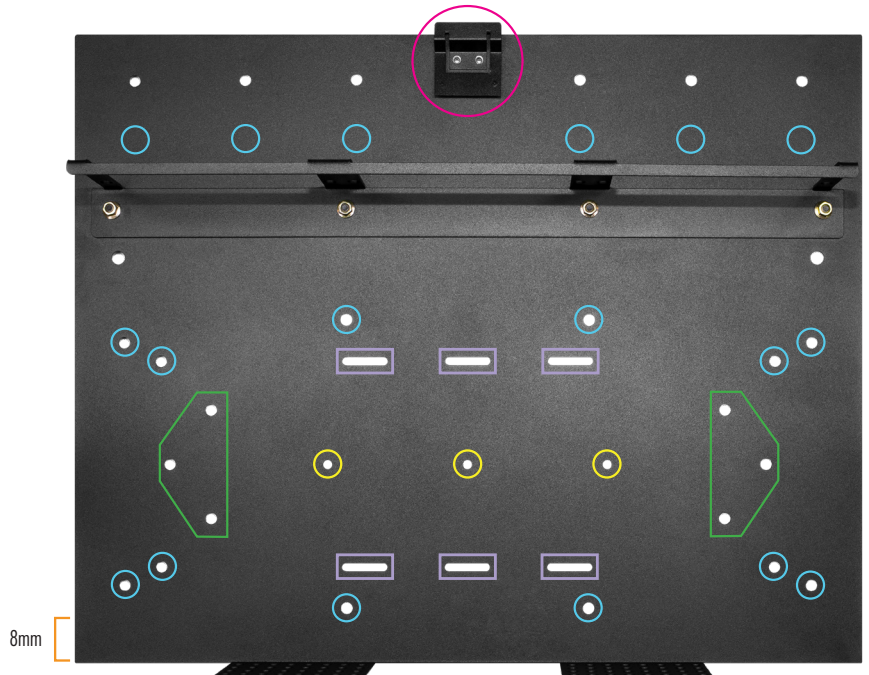
## WHAT'S INCLUDED

- 4 blue half-moon cable managers
- 4 pressure sensitive Velcro® wire mgmt. straps
- 1 ground lug kit
- 1 Velcro® splice tray tie down (2 meters)
- 10 nylon Fiber Manager Loops
- Mounting hardware: M6 screws, M6 cage nuts
- 4 zip ties
- Port identification label

2RU Premium Patch Panel	MAX. FIBER COUNT		ADAPTER PANEL CAPACITY	SPLICE TRAY CAPACITY			
	LC	SC/ST	LGX	Plastic	Metal		
	144	72	6	 <b>ST-PA-24</b> * can screw down 5 	 <b>ST-M-24</b> 6 N/A	 <b>ST-M-24-8</b> 6 	 <b>ST-M-36</b> 4 N/A

## Premium Patch Panel Sliding Tray

-  Nylon Fiber Manager Loops
-  E-Z Slide™ Tray Latch
-  Blue Half-moon Cable Managers
-  Velcro® Tie Downs
-  Screw Down Holes for Splice Tray ST-PA-24
-  8mm Additional Space Behind Bulkhead



# 2RU Premium Patch Panel

