

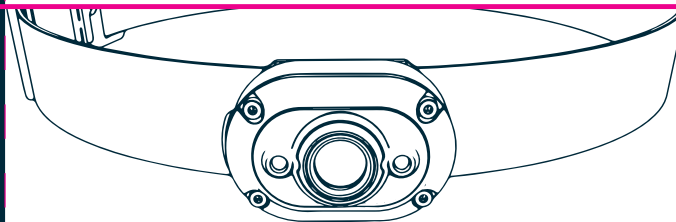
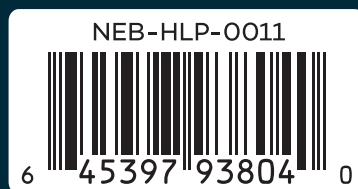
# MYCRO™ HEADLAMP & CAP LIGHT

# NEBO®

All copyrighted and copyrightable materials, including, without limitation, the logo, design, text, graphics, pictures, copywriting and the selection and arrangement ("Materials") thereof all ALL RIGHTS RESERVED Copyright ©2020 Alliance Sports Group LP.

Alliance Consumer Group  
5650 Alliance Gateway Freeway  
Fort Worth, TX 76177  
800.255.6061

Made in China



## MYCRO HEADLAMP

The rechargeable MYCRO Headlamp & Cap Light features a 400 lumen Turbo Mode, 5 additional light modes, 135° adjustable tilt and a USB to Micro USB charging cable.

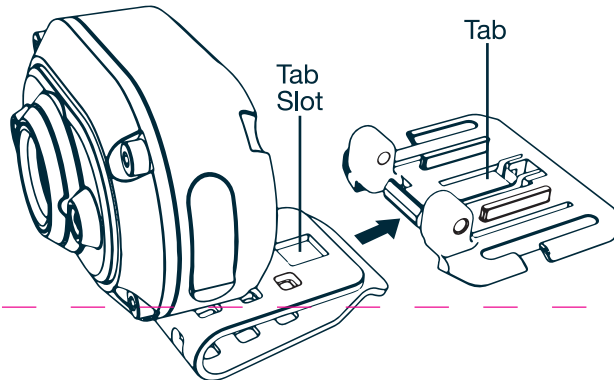
This product is guaranteed against all defects in workmanship and materials for the original owner for one year from the date of purchase.



For more information, detailed video instructions, and warranty registration, visit **NEBOLIGHTS.com**.

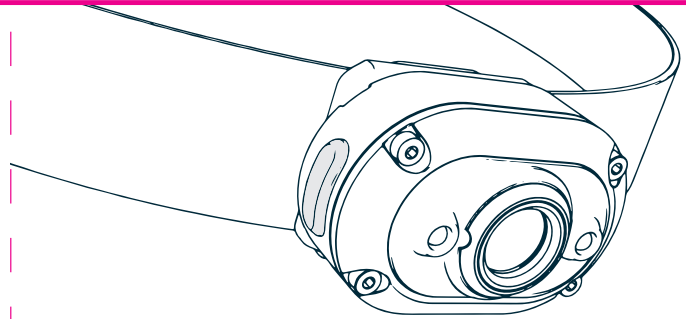
MODES	LUMENS	HOURS	METERS
<b>TURBO</b>	<b>400</b>	<b>30s</b>	<b>80</b>
HIGH	150	1	50
<b>MEDIUM</b>	<b>50</b>	<b>2</b>	<b>18</b>
LOW	15	5	10
<b>GREEN</b>	<b>10</b>	<b>10</b>	<b>14</b>
RED	10	10	14

TURBO MODE: press & hold button while ON  
 DIRECT-TO-RED: press & hold button while OFF



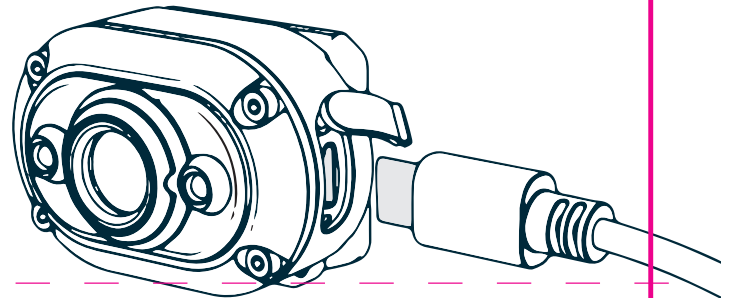
#### VERSATILE CLIP

Provides 135° adjustable tilt and use as a cap light when the head strap unit is removed. To remove, pull Tab upwards to detach from Tab Slot and pull unit away from the MYCRO. To reattach, simply push back into place.



#### MODE RECALL

Once the light has been ON for 8 seconds, the next button push will turn the light OFF. After the MYCRO has been OFF for 30 seconds, the next button push will activate the last used mode.



#### USB RECHARGEABLE

To charge, plug the USB end into a power source and plug the Micro USB end into the MYCRO. The battery indicator LED will glow red while charging and green when fully charged.