



# NETXPERT XG2



QUICK START GUIDE



# CONTENTS




|                                                               |           |
|---------------------------------------------------------------|-----------|
| <b>SAFETY INSTRUCTIONS .....</b>                              | <b>2</b>  |
| Battery .....                                                 | 3         |
| Storage .....                                                 | 3         |
| Scope of delivery .....                                       | 3         |
| Device description .....                                      | 4         |
| <b>GENERAL OPERATIONS .....</b>                               | <b>5</b>  |
| Icons .....                                                   | 5         |
| Button functions .....                                        | 6         |
| <b>REGISTER DEVICE .....</b>                                  | <b>7</b>  |
| <b>PASSIVE NETWORK TESTS – TEST RESULTS IN 10 STEPS .....</b> | <b>8</b>  |
| 1. Set language .....                                         | 8         |
| 2. Set date and time .....                                    | 8         |
| 3. Set standards .....                                        | 8         |
| 4. Personalize your reports .....                             | 8         |
| 5. Cable test settings .....                                  | 9         |
| 6. Set project options .....                                  | 9         |
| 7. Select cable type .....                                    | 9         |
| 8. Cable labeling .....                                       | 9         |
| 9. Set reference .....                                        | 10        |
| 10. Cable test .....                                          | 10        |
| 11. Cable test menu options .....                             | 11        |
| <b>ACTIVE NETWORK TESTS .....</b>                             | <b>12</b> |
| <b>TOOLS – ADDITIONAL TEST OPTIONS .....</b>                  | <b>13</b> |

The NetXpert XG2 network cabling qualifier offers a complete solution to test copper and fiber network cabling. In a quick and easy way, the device tests and documents, whether a cabling link is able to support data rates of up to 10 Gigabit Ethernet in compliance with IEEE 802.3 by testing the data carrying capabilities of Ethernet network cabling up to 10Gb/s, determining the signal-to-noise ratio, and detecting faults in the cable wiring. This ensures that the cabling is able to support the speed capabilities of active equipment connected to the network.

In this quick start guide you find the most important information for carrying out cable tests with the NetXpert XG2. For detailed descriptions please use the user manual on our website: [platinumtools.com/XG2](http://platinumtools.com/XG2)

## SAFETY INSTRUCTIONS

To ensure safe operations of the NetXpert XG2, follow the instructions carefully and observe caution and warning messages in this manual. Failure to observe caution and warning messages can damage the equipment and can result in severe injury or death.

| Icon                                                                               | Definition                                                            |
|------------------------------------------------------------------------------------|-----------------------------------------------------------------------|
|   | Warning/caution: potential for personal injury or damage to equipment |
| Voltage                                                                            | Warning: hazards could cause harm or death                            |
|   | Conformité Européenne. Conforms to EU directives                      |
|  | Disposal information                                                  |



**Warning!** To avoid possible fire, electric shock, or personal injury:

- Do not open the case; no user serviceable parts are inside.
- Do not modify the tester.
- Do not use the tester if it is damaged. Perform a visual inspection of the tester before use.
- The tester is not intended to be connected to active telephone inputs, systems, or equipment, including ISDN devices. Prolonged exposure to the voltages applied by these interfaces may damage the tester.
- The Lithium-ion battery pack is to be serviced by qualified personnel only. Only the original battery pack type should be used with this product.

**WARNING:** This is a Class A product. In a domestic environment this product may cause radio interference in which case the user may be required to take adequate measures.



## BATTERY

The NetXpert XG2 is powered by a rechargeable Lithium-ion battery.

- **To charge the battery**, plug the charger into the charging jack of the tester and then plug the charger into the power source. The tester can be used normally while the battery is charging. The battery of the NetXpert XG2 is not user serviceable.
- **In the event that you need to remove the battery**, remove the screws on the back panel of the NetXpert XG2 and unplug the battery. Be sure to remove all the leads connecting the battery to the device. Please make sure that the battery is charged overnight or at least for 5 hours. This will increase the accuracy of the battery status indicator.
- **High energy battery upgrade** - a high energy battery is available as an option which increases battery life by approximately 50%. Order p/n TXGBATX.

**Note:** The high-quality Lithium-ion battery is designed to last for the life of the tester and should not need replacement. Lithium-ion batteries are hazardous waste and should be disposed of in compliance with the applicable waste regulations.

## STORAGE

When not in use, store the NetXpert XG2 in the included protective case.

Do not expose the NetXpert XG2 to high temperatures (above 140°F/60°C) or humidity.

## SCOPE OF DELIVERY

### Contents of NetXpert XG2 Basic Kit

- 1 NetXpert XG2 main unit
- 1 NetXpert XG2 Active Remote unit
- 2 Power supplies
- 1 Hard carrying case
- 2 patch cords CAT 6A

### Contents of NetXpert XG2 Fiber Kit

- 2 NetXpert XG2 main unit
- 2 NetXpert XG2 Active Remote unit
- 4 Power supplies
- 2 Hard carrying case
- 4 patch cords CAT 6A



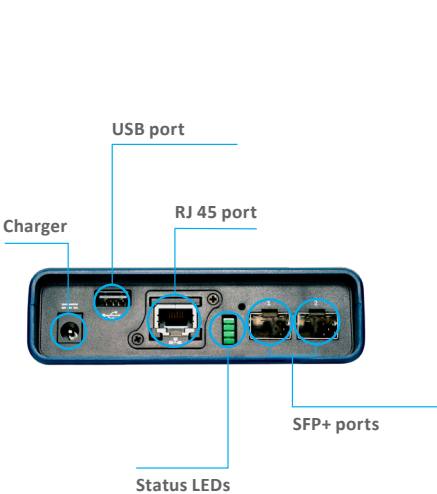
Fiber Kit includes two Basic Kits shown above

# DEVICE DESCRIPTION

## MAIN UNIT



## ACTIVE REMOTE



## GENERAL OPERATIONS

For detailed descriptions please consult the user manual on our website.

Except for the power on/off function, the main unit is exclusively operated via the touch-sensitive screen.



## ICONS



Displays the Cable Test screen to setup and run cable tests



Displays the Network Tests screen to run a variety of active network tests



Displays the File Manager to view and save reports on the tester



Displays the Tools menu to access PoE testing, BERT test, tone gen. and link light



Displays the Setup menu to change settings on the tester



Puts second XG2 tester into REMOTE mode for fiber testing



Shows which mode the unit is in and allows the user to switch between modes



This icon indicates that the battery of the NetXpert XG2 is being charged over an external power supply - tester can be used normally while charging

## BUTTON FUNCTIONS

The NetXpert XG2 is turned on by pressing the power button. The button indicates the operating status by light signals:



OFF

The NetXpert XG2 is turned off



GREEN LIGHT  
(CONTINUOUS)

The NetXpert XG2 runs on battery and is sufficiently charged



GREEN LIGHT  
(FLASHING)

The NetXpert XG2 is being charged



ORANGE LIGHT  
(FLASHING)

The NetXpert XG2 is turned on and battery status is lower than 20%

- A short press of the power button will put the NetXpert XG2 into sleep mode.
- The NetXpert XG2 automatically enters sleep mode to conserve battery power if no input or activity is performed on the device.
- A long press of the power button will turn off the NetXpert XG2.

## ACTIVE REMOTE BUTTONS

- Tap the **Status** button to check the battery status of the Active Remote and to display the latest test result.
- Tap the **Test** button to start a qualification test from the Active Remote.



## REGISTER DEVICE

To receive important firmware updates, news about new features and accessories, and to access technical support for your XG2, we ask that you register your device on our website at: <https://platinumtools.com/XG2>



During the registration process you will be asked to supply the serial number of your XG2. This number can be found on the back of the main unit, in the area highlighted in gold in the image above. It generally can also be found on the outside of the box in which the unit is shipped.

You will also be asked for the date and place of purchase of your XG2. Supplying this information will help Platinum keep track of your warranty and make future service (if needed) much easier.

**Please register your XG2 at [platinumtools.com/XG2](https://platinumtools.com/XG2)**

**Download the full user manual while you are there.**





## PASSIVE NETWORK TESTS – TEST RESULTS IN 10 STEPS



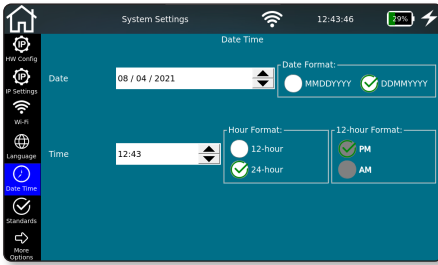
### 1. Set language

Tap the **Settings** icon to configure the NetXpert XG2.

Tap **Language** icon and select the desired language for the user interface. When changing the language, the keypad will be changed accordingly.



### 2. Set date and time



Set the current time and date. These have to be entered in the defined format. You can choose the time format displayed – a 12-hour or 24-hour format.



### 3. Set standards

Choose between Meters and Feet for the display of the length.

The NetXpert XG2 supports various wiring standards. Choose TIA568A/B. This affects primarily the display of the wiremap.



### 4. Personalize your reports

Must select **More Options** to access **Reports** screen. If you want to personalize your reports, you can enter the name of your company, of the technician doing the job, and a company logo.

To include a company logo, tap **Import logo**. Connect a USB flash drive containing your company logo to the NetXpert XG2. A file browser will open, and you can navigate to your logo file on the USB flash drive and select the logo.



## 5. Cable Test Settings

From the home screen, tap **Cable Test** to display the cable test menu. Further project specific settings can be made here. Moreover, a new test can be started from here. At **Cable Test** there are several menu options. The last selection is displayed automatically (example below: menu option “Cable Test”).

**On the left-hand side**, the various menus are listed and, if already created, the list of the tested cables.

**On the right-hand side**, the test result of the cable selected on the left is displayed.

A qualification test can directly be started by tapping the **Test** button.



## 6. Set project options

Tap the **Projects + Reports** icon to make general settings for your test project.



## 7. Select cable type

Tap the **Cable Type** icon on the left to select or configure different cable types.

**Important:** Before running a test, it is necessary to select the correct type of cable, otherwise the result could be affected.



## 8. Cable Labeling

Tap the **Cable Labeling** icon to define the labeling of the individual measurements. This will help to retrieve and allocate the measurements more easily later on.



## 9. Set Reference

To exclude test cables that are used to connect the NetXpert XG2 and the Active Remote, from the length measurement, you can have their length determined and automatically deducted from the total length of the cabling tested by the NetXpert XG2. The sequence of this process is explained for fiber optics on the screen of the main device using GIFs.



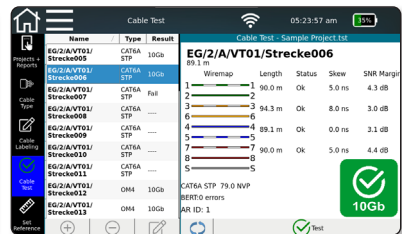
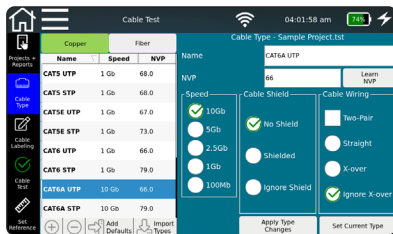
## 10. Cable Test

When tapping the **Cable Test** icon, you will always return to the test screen.

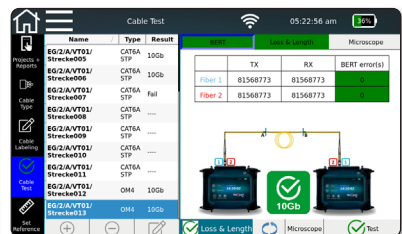
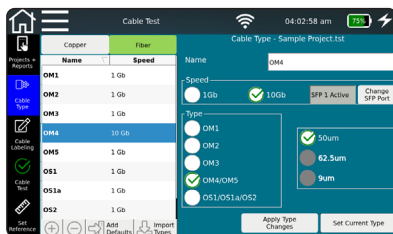
The test screen displays an overview over the cabling links to be tested/already tested. Moreover, you can view the results of the tests that are already completed and start a new test.

Tapping the **Test** button will launch a complete cable test on the cable selected in **Cable Type**. The next free cable will be selected from the list or a new one is added below.

### Copper:



### Fiber:



All test results can be managed in the file manager.

For detailed descriptions please consult the user manual on our website.



### 11. Cable Test Menu Options

From the **Cable Test** screen, the following functions can be performed:



Add new cable



Delete cable and test



Edit cable – Labels and attributes such as building, floor, room, etc. can be adjusted



Start test



## ACTIVE NETWORKS TESTS

The NetXpert XG2 offers different possibilities for analyzing troubleshooting in active networks.



Link Status (an overview over the connections to the network)



DHCP Test



Network Discovery



Ping Lists



Traceroute



LinkLayer Discovery Protocol



Cisco Discovery Protocol



VLAN

For detailed descriptions please consult the user manual on our website.



## TOOLS – ADDITIONAL TEST OPTIONS

NetXpert XG2 offers various individual cable tests for targeted troubleshooting or cable localization.

### Copper:



Wiremap & Margin (Wiremap and signal-to-noise ratio)



Port Discovery



BERT (Bit Error Rate Test)



Tone Generator



Link Light

### Fiber:



BERT (Only Bit Error Rate Test)



Microscope



LiveLight



Link Light

For detailed descriptions please consult the user manual on our website.





9730 Northcross Center Court


Huntersville, NC 28078

USA

 800-321-5847

For technical support

 800-749-5783

 [platinumtools.com/support/  
technical-product-support/](https://www.platinumtools.com/support/technical-product-support/)

Find your local distributor:

[platinumtools.com/where-to-buy](https://www.platinumtools.com/where-to-buy)

©2021 NSI Industries. In line with our policy of continuous improvement and feature enhancement, product specifications are subject to change without notice. All trademarks, registered or unregistered, are the sole property of their respective owners.

p/n TXG-QSG rev0621