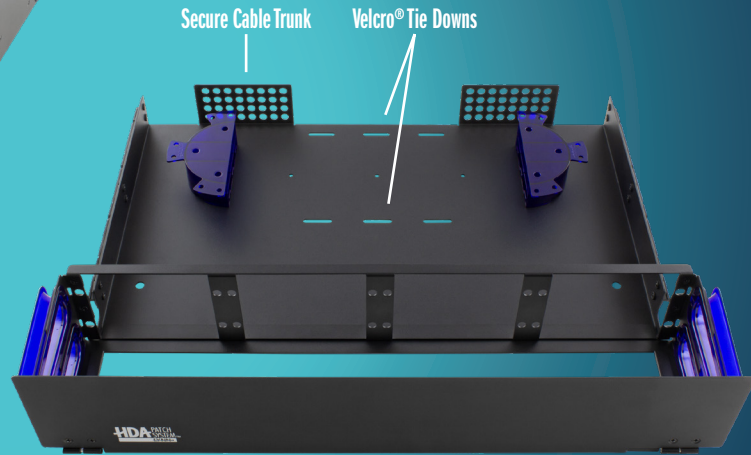
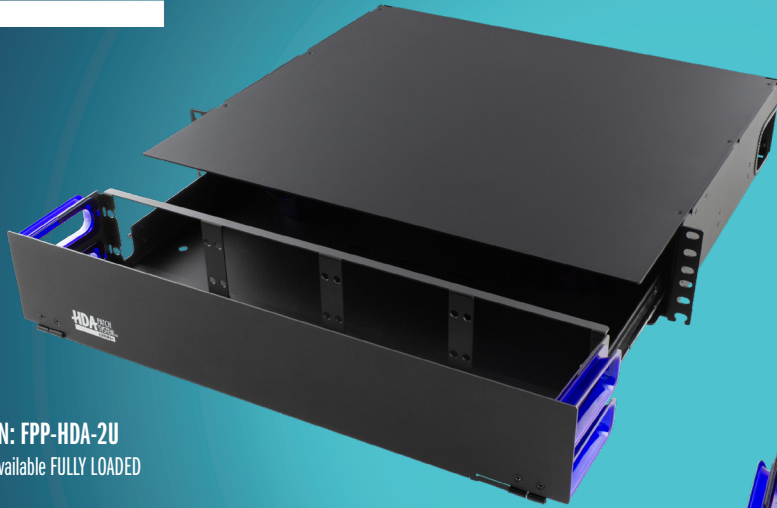


2U HDA Rack Mount

Fiber Patch Panel Enclosure



P/N: FPP-HDA-2U
* Available FULLY LOADED

Tray Slides Without Moving Trunk

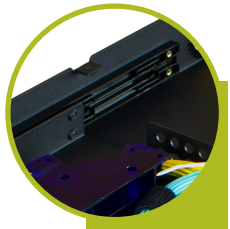
Preterminated trunk enters rear. Trunk breakouts go forward to front of panel allowing tray to slide forward without moving the trunk.



Extreme Density - 33% increase in density compared to standard LGX panel.



Easy Access - Large opening for easy front cable access to each port.



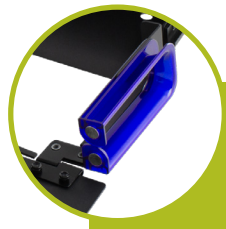
E-Z Glide™ Tray - Tray slides smoothly along guides with gentle catches and stops.



Non-captive Mounting Ears - Preinstall screws in rack, simply place rack on screws and tighten.



Blue Bend Radius Bracket - Creates gradual bend for cable preventing kinks.



Magnetic Door - Blue Bend Radius Bracket is magnetized and attaches to metal door.

More Features





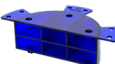
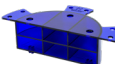
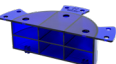
- Hinged front and rear doors
- Removable top panel and front faceplate
- Non-captive side and rear entries for trunks
- Standard 19" rack mountable unit

Specifications

- Dimensions: standard 2U height x 19" W x 15 7/8" D
- Material: 16AWG steel
- Coating: electrostatic polyester powder coat black paint

WHAT'S INCLUDED

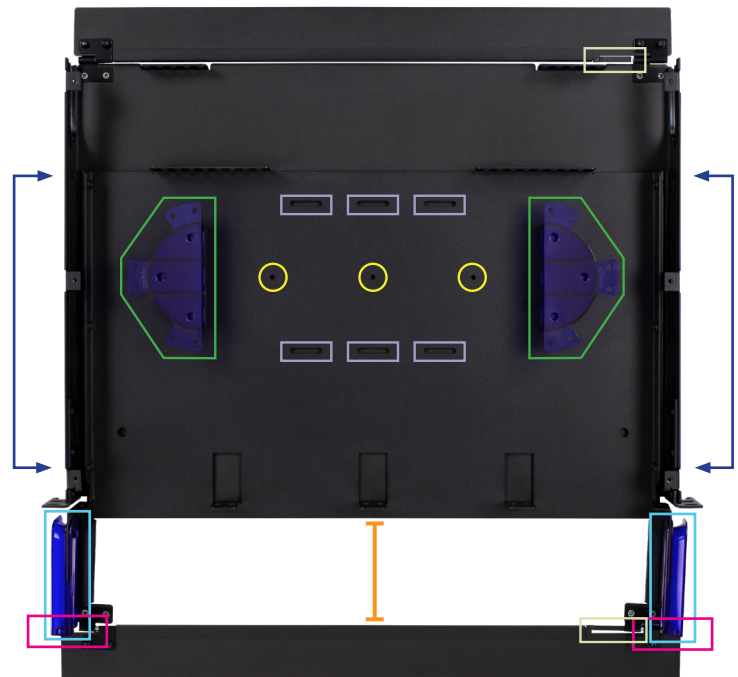
- 4 blue half-moon cable managers
- 4 pressure sensitive Velcro® wire mgmt. straps
- 1 ground lug kit
- 1 Velcro® splice tray tie down (2 meters)
- 10 nylon Fiber Manager Loops
- Mounting hardware: M6 screws, M6 cage nuts
- 4 zip ties
- Port identification label

	MAX. FIBER COUNT		ADAPTER PANEL CAPACITY	SPLICE TRAY CAPACITY			
	LC	SC	HDA	Plastic	Metal		
Splicing	144	96	8	 ST-PA-24 5 *Can Screw Down	 ST-M-12 6	 ST-M-24 6	 ST-M-24-8 6
						N/A	
				120	72	144	144
Preterminated	288*	96	8	/			

* Using 36-Fiber adapter plates

HDA Rack Mount Sliding Tray

- Blue Half-moon Cable Managers
- Velcro® Tie Downs
- Screw Down Holes for Splice Tray
- E-Z Glide™ Tray
- Blue Bend Radius Bracket
- Magnetic Door (Blue Bend Radius Bracket is Magnetized)
- Easy Access Opening
- Door Metal Tab (Secures Door on Hinge)



2U HDA Rack Mount

Fiber Patch Panel Enclosure

