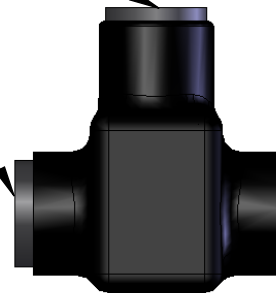


REMOVABLE CAP
TO TIGHTEN SCREW
(REPLACE WHEN COMPLETE)

REMOVABLE CAP
FOR DUAL ENTRY
(INSERT IN OTHER SIDE)

IPLD600-5 SHOWN

PART NUMBER	NO. OF PORTS	LENGTH
IPLD600-3	3	4.55
IPLD600-4	4	5.85
IPLD600-5	5	7.15
IPLD600-6	6	8.45
IPLD600-7	7	9.75
IPLD600-8	8	11.05
IPLD600-10	10	13.65
IPLD600-12	12	16.25



WIRE ENTRY POINT
WIRE RANGE: 600KCMIL - #6AWG
PRE-FILLED W/ OXIDE INHIBITOR

CONTACT NSI FOR SALES @ 800.321.5847

NOTES:

- CONNECTOR MANUFACTURED FROM 6061-T6 ALUMINUM ALLOY.
- UL LISTED PER UL486A/B SPECIFICATIONS FOR 600V.
- DUAL RATED FOR 75°C COPPER AND/OR ALUMINUM CONDUCTOR.
- COLD TEMPERATURE RATED TO -45°C.
- HIGH DIELECTRIC STRENGTH INSULATION IS ABRASION, CHEMICAL AND UV RESISTANT.

		POLARIS SALES CO. INC					
PROPRIETARY AND CONFIDENTIAL		11625 PROSPEROUS DRIVE ODESSA, FL 33556					
THE INFORMATION CONTAINED IN THIS DRAWING IS THE SOLE PROPERTY OF POLARIS SALES CO. INC. ANY REPRODUCTION IN PART OR AS A WHOLE WITHOUT THE WRITTEN PERMISSION OF POLARIS SALES CO. INC. IS PROHIBITED.		TITLE: INSULATED DUAL ENTRY 600 CONNECTOR					
<table border="1"> <tr> <td>NAME</td> <td>DATE</td> </tr> <tr> <td>S.PARRY</td> <td>6/2012</td> </tr> </table>		NAME	DATE	S.PARRY	6/2012	DWG. NO. IPLD600-	
NAME	DATE						
S.PARRY	6/2012						
MATERIAL: N/A		SCALE: N/A	SHEET: 1 OF 1				