



CONTROL TRANSFORMERS

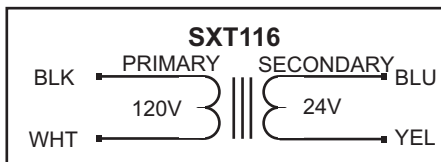
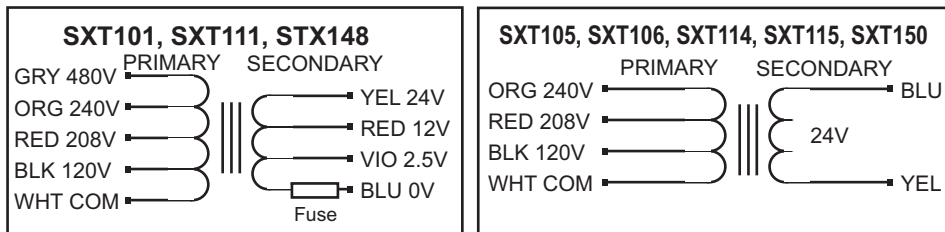
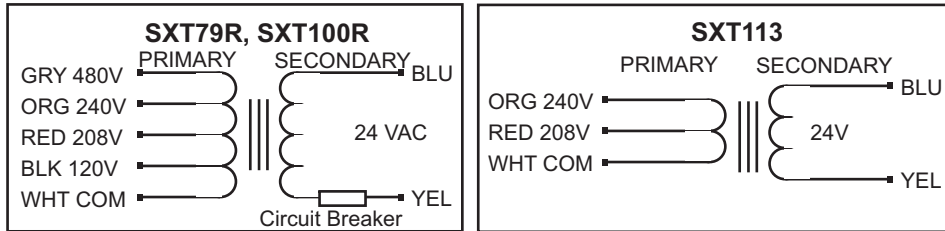


The transformers are designed for use in 2.5V, 12V or 24V AC control systems, including air conditioning, thermostats, gas valves, relays or other applications requiring a primary to secondary voltage transformer. Check listed ratings to ensure replacement transformer has the same primary voltage and equal or greater VA ratings.

INSTALLATION

1. Disconnect power supply before beginning installation to prevent electrical shock or equipment damage.
2. Mount transformer to unit. See page (2) for mounting types.
3. Connect secondary & primary wiring. Refer to wiring diagrams below. On terminal type transformers, be sure that no exposed wire can come in contact with any terminal.
4. Tape all unused wire ends separately to avoid electrical short.
5. Check installation and reconnect power supply for proper operation.

WIRING COLOR CODES



POWER RATINGS

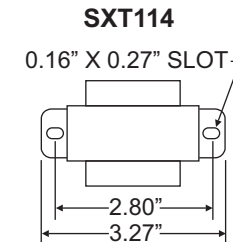
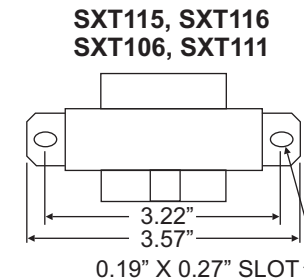
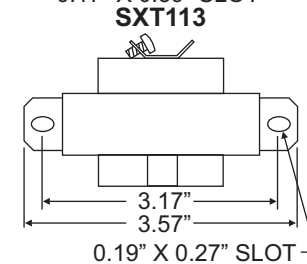
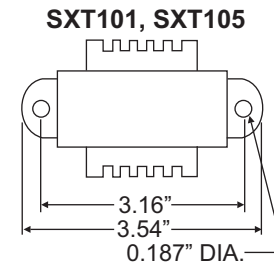
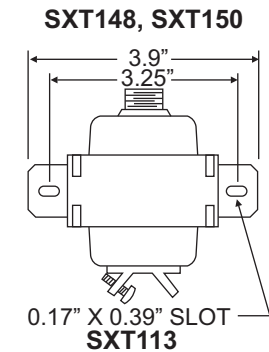
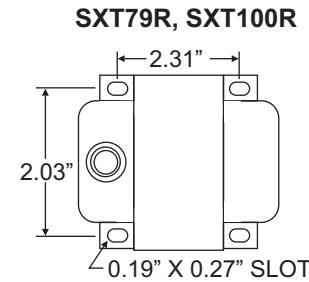
Fused or Circuit Breaker Type

SXT79R: 75VA, 3.2A Circuit Breaker
 SXT100R: 100VA, 4A Circuit Breaker
 SXT101: 40VA, 3A Fuse
 SXT111: 40VA, 3A Fuse
 SXT148: 48VA, 3A Fuse
 SXT150: 50VA, 3A Fuse

Non-Fused Type

SXT113: 40VA
 SXT106: 40VA
 SXT105: 40VA
 SXT114: 20VA
 SXT115: 40VA
 SXT116: 40VA

MOUNTING TYPES



SEALED UNIT PARTS CO., INC.
 2230 Landmark Place, Allenwood, NJ 08720 USA
 Phone: (732) 223-6644 - www.supco.com