

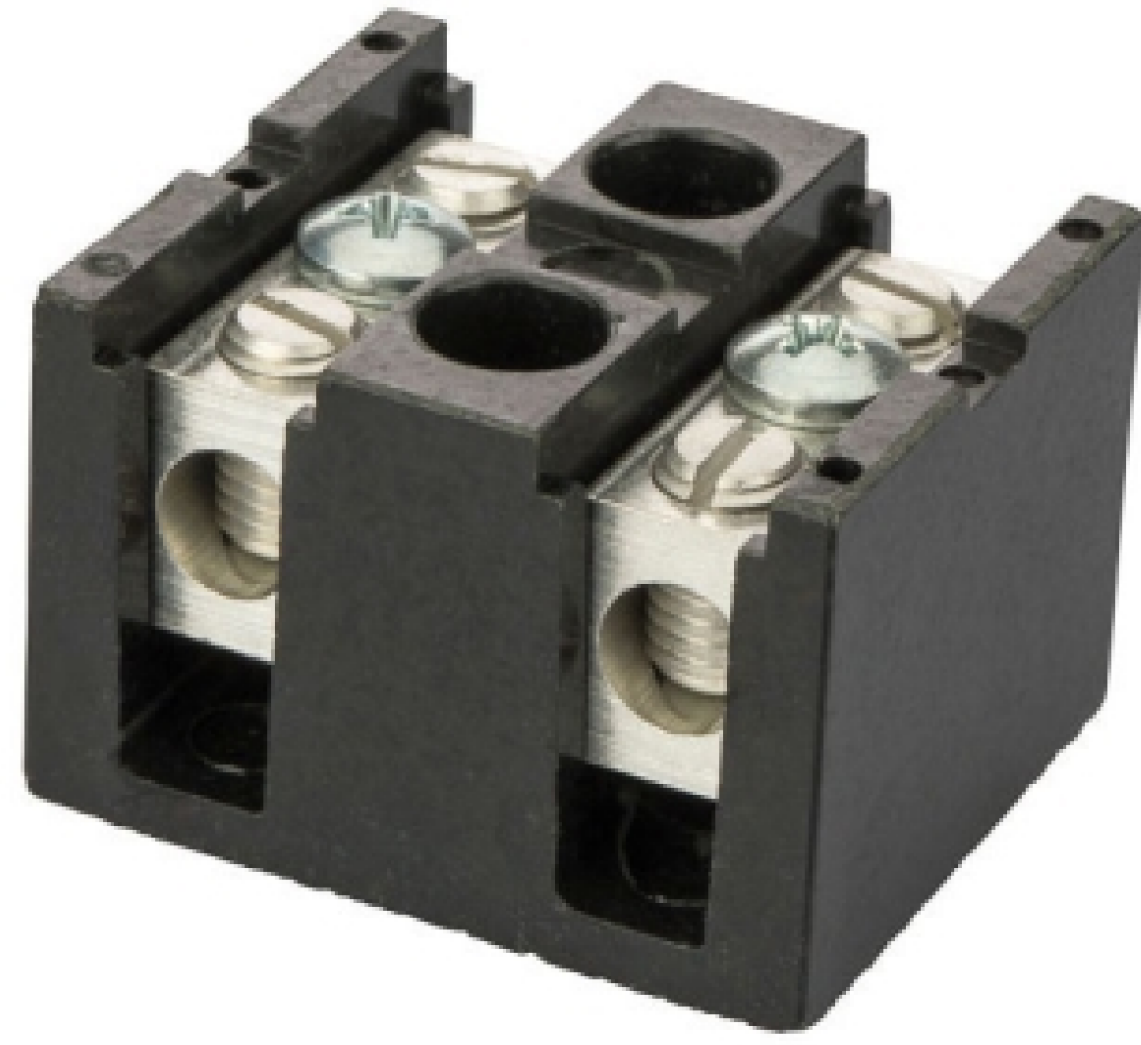
FEATURES:

1. Terminal Bloks™ power terminal blocks are made from high conductivity bodies and will accept either copper or aluminum conductors on the line side.
2. The bases are manufactured from high strength phenolic compound.
3. 2-14 AWG.

SPECIFICATIONS:

1. Temperature Rating: 150 °C.
2. Voltage: 75AMP, 600V Max.

TBS Series: Splicer/Reducers 75 Amps, 600V



CAT. NO.	NO. OF POLES	WIRE RANGE	LENGTH	HEIGHT	WIDTH	STD. CTN. QTY.
TBS2-2	2	2-14 AWG CU or AL	1.750	1.250	1.500	6
TBS2-3	3	2-14 AWG CU or AL	2.380	1.250	1.500	6