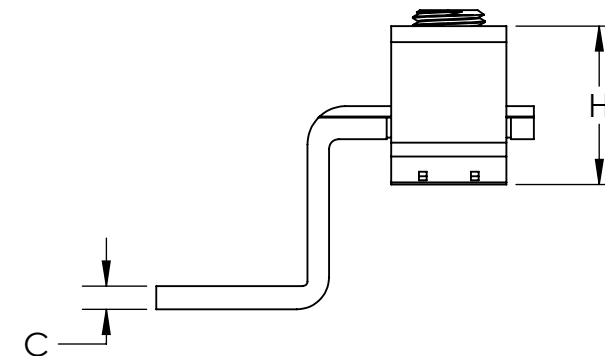
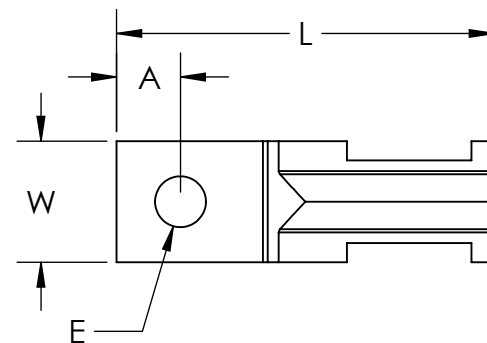
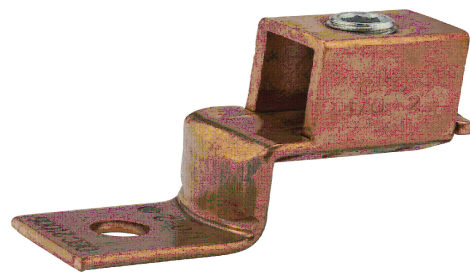


FEATURES:

1. Made of 99.98% pure electrolytic copper.
2. Steel-plated screws to prevent rusting.
3. 25 to 70 ampere sizes have slotted head screws.
4. Larger sizes have hex head screws.
5. For use with Copper wire only.

POLARIS®

PROGRAM:	SOLIDWORKS
UPDATED:	03/2025
SALES REV:	A
SIZE:	B (11x17)

MECHANICAL CONNECTORS: DE SERIES COPPER SINGLE SOLDERLESS LUGS

CAT.NO.	WIRE RANGE	MTG. BOLT SIZE	AMP RATING	MAX TORQUE VALE (IN./LBS.)	WRENCH SIZE		LENGTH (L)	WIDTH (W)	HEIGHT (H)	TANG LENGTH (A)	TANG THICKLESS (C)	MTG HOLE DIA (E)
DE703	10-14 AWG	1/8	25	60	Slotted	Button	1.025	0.310	0.365	0.195	0.069	0.146
DE704	6-14 AWG	3/16	35	90	Slotted	Round	1.170	0.380	0.480	0.230	0.061	0.200
DE705	2-8 AWG	5/16	70	125	Slotted	Round	1.565	0.500	0.640	0.250	0.080	0.270
DE711	4-14 AWG	1/4	70	90	Slotted	Round	1.415	0.500	0.560	0.250	0.080	0.270
DE706	1/0-8 AWG	3/8	125	150	Slotted	Hex	1.967	0.630	0.825	0.332	0.120	0.265
DE713	3/0-4 AWG	3/8	175	200	3/16	Hex	2.190	0.750	1.039	0.440	0.130	0.416
DE707	4/0-2 AWG	1/2	225	200	7/32	Hex	2.600	1.000	1.170	0.470	0.120	0.346
DE710	350 MCM-1/0 AWG	3/4	300	250	5/16	Hex	3.220	0.975	1.400	0.450	0.186	0.410
DE708	500 MCM-4/0 AWG	15/16	400	300	15/16	Hex	4.250	1.492	1.611	0.840	0.190	0.400

SPECIFICATIONS:

- UL486A Listed for Wire Connector.
- Temperature Rating: 90 °C. 9CU.
- Voltage: 600V max.