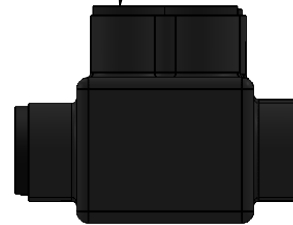
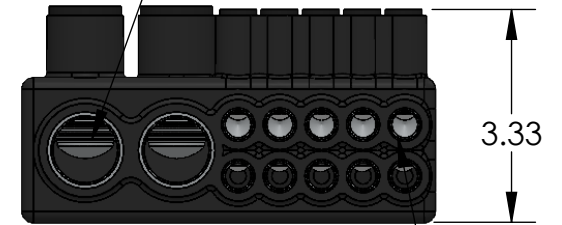


REMOVABLE CAP TO TIGHTEN SCREW (REPLACE WHEN COMPLETE)



INTERNAL HEX PRESSURE SCREW



(5) STACKED SINGLE ENTRY WIRE PORT WIRE RANGE: 1/0 - #14 AWG PRE-FILLED W/ OXIDE INHIBITOR

CONTACT NSI FOR SALES @ 800.321.5847



**POLARIS**  
SALES . CO . INC

PROPRIETARY AND CONFIDENTIAL

11625 PROSPEROUS DRIVE ODESSA, FL 33556

THE INFORMATION CONTAINED IN THIS DRAWING IS THE SOLE PROPERTY OF POLARIS SALES CO. INC. ANY REPRODUCTION IN PART OR AS A WHOLE WITHOUT THE WRITTEN PERMISSION OF POLARIS SALES CO. INC. IS PROHIBITED.

TITLE:

INSULATED STACKED  
DUAL ENTRY TENNANT  
TAP

NAME	DATE
DRAWN BY T.MITCHELL	01/2022

DWG. NO.

IPLDS7502-1,010

MATERIAL: N/A

SCALE: N/A

SHEET: 1 OF 1

NOTES:

1. CONNECTOR MANUFACTURED FROM 6061-T6 ALUMINUM ALLOY.
2. UL LISTED PER UL486A/B SPECIFICATIONS FOR 600V.
3. DUAL RATED FOR 90°C COPPER AND/OR ALUMINUM CONDUCTOR.
4. COLD TEMPERATURE RATED TO -45°C.
5. HIGH DIELECTRIC STRENGTH INSULATION IS ABRASION, CHEMICAL AND UV RESISTANT.