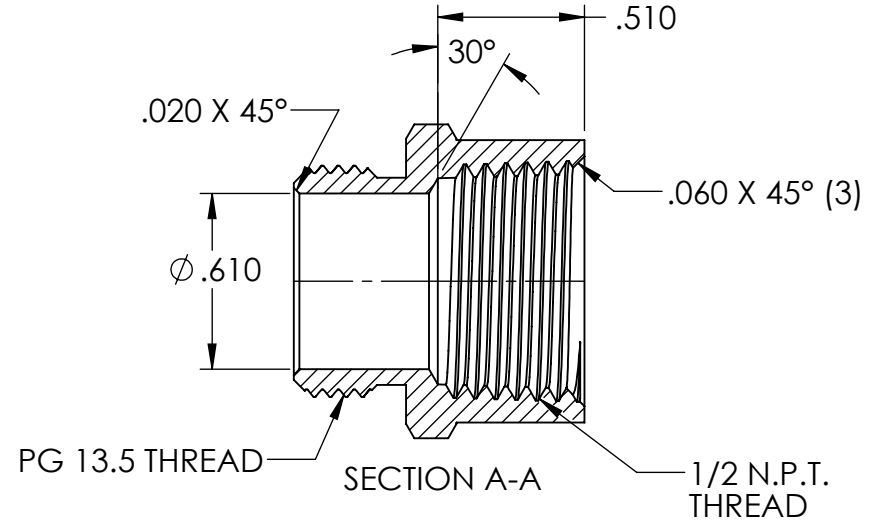
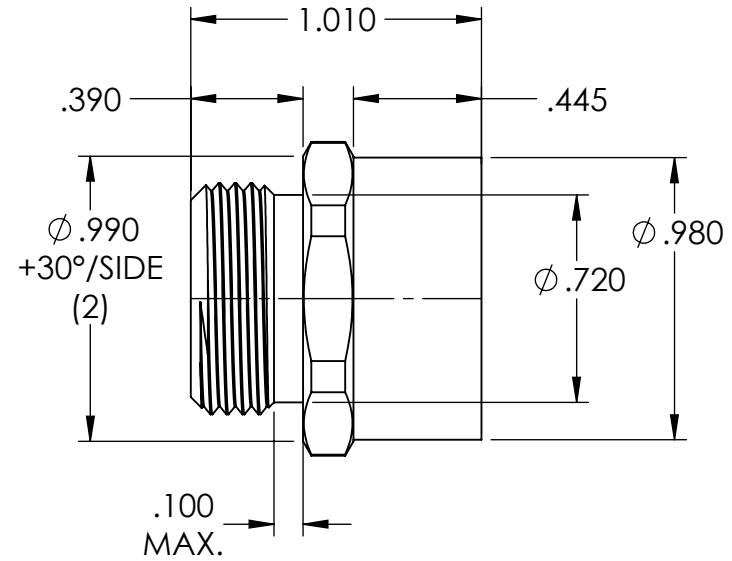



# NOTES:

- 1.) PART A IS PLATED ELECTROLESS NICKEL .0001 MIN-.0003 MAX.
- 2.) PART UP IS UNPLATED
- 3.) BREAK ALL SHARP CORNERS
- 4.) REF. BAR-16 (1" HEX X .610 I.D.)



REV.	DATE	CHANGE	UNLESS OTHERWISE SPECIFIED:	NAME	DATE		
A	2/5/02	DRAWING RELEASED C.V.	DIMENSIONS ARE IN INCHES TOLERANCES: FRACTIONAL $\pm 1/64$ ANGULAR: MACH $\pm 1^\circ$ BEND $\pm 1^\circ$ ONE PLACE DECIMAL $\pm .015$ TWO PLACE DECIMAL $\pm .010$ THREE PLACE DECIMAL $\pm .005$	DRAWN	JCN 7/15		
B	2/7/02	REVISED PLATING SPEC.	INTERPRET GEOMETRIC TOLERANCING PER:	CHECKED		TITLE: <b>ADAPTER</b>	
C	2/18/02	"D" BORE DEPTH WAS THREAD DEPTH	MATERIAL <b>ALUMINUM</b>	ENG APPR.			
D	1/2/03	"H" UNDERCUT NOW .720, WAS .740	FINISH <b>NICKEL PLATED</b>	MFG APPR.		SIZE <b>A</b> DWG. NO. <b>RAPG-13.5M50F-A</b>	
E	7/30/15	REDRAWN	DO NOT SCALE DRAWING	Q.A.			
			PROPRIETARY AND CONFIDENTIAL THE INFORMATION CONTAINED IN THIS DRAWING IS THE SOLE PROPERTY OF REMKE INDUSTRIES. ANY REPRODUCTION IN PART OR AS A WHOLE WITHOUT THE WRITTEN PERMISSION OF REMKE INDUSTRIES IS PROHIBITED.			SCALE: 1.5:1	SHEET 1 OF 1

5

4

3

2

1