

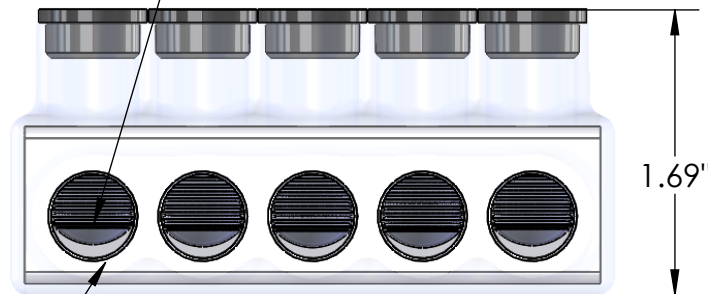
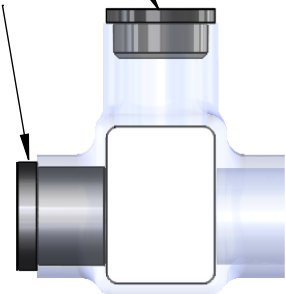
SET SCREW
PLUG SP2/0

CABLE ENTRY
PLUG CP2/0

3/16 INTERNAL HEX
PRESSURE SCREW

IPLD2/0-5C SHOWN


PART NUMBER	NO. OF PORTS	LENGTH
IPLD2/0-3C	3	2.45
IPLD2/0-4C	4	3.20
IPLD2/0-5C	5	3.94
IPLD2/0-6C	6	4.70
IPLD2/0-8C	8	6.20
IPLD2/0-10C	10	7.70
IPLD2/0-12C	12	9.20
IPLD2/0-14C	14	10.70



WIRE ENTRY PORT
WIRE RANGE: 2/0 - #14 AWG
PRE-FILLED W/ OXIDE INHIBITOR

CONTACT NSI FOR SALES @ 800.321.5847

- NOTES:
- CONNECTOR MANUFACTURED FROM 6061-T6 ALUMINUM ALLOY.
 - UL LISTED PER UL486A/B SPECIFICATIONS FOR 600V.
 - DUAL RATED FOR 90°C COPPER AND/OR ALUMINUM CONDUCTOR.
 - COLD TEMPERATURE RATED TO -45°C.
 - HIGH DIELECTRIC STRENGTH INSULATION IS ABRASION AND CHEMICAL RESISTANT.



POLARIS
SALES . CO . INC

PROPRIETARY AND CONFIDENTIAL		11625 PROSPEROUS DRIVE ODESSA, FL 33556	
THE INFORMATION CONTAINED IN THIS DRAWING IS THE SOLE PROPERTY OF POLARIS SALES CO. INC. ANY REPRODUCTION IN PART OR AS A WHOLE WITHOUT THE WRITTEN PERMISSION OF POLARIS SALES CO. INC. IS PROHIBITED.		<p>TITLE: CLEAR INSULATED DUAL ENTRY 2/0 CONNECTOR</p>	
DRAWN BY	NAME	DATE	DWG. NO.
T.MITCHELL	T.MITCHELL	11/2021	IPLD2/0C SERIES
MATERIAL: N/A		SCALE: N/A	SHEET: 1 OF 1