

# QUICK ACTION™

## Gutter Outlet Saws



**Work. Perform. Outlast.**  
Limited Lifetime Warranty

### With Arbor and High Speed Pilot Drill

For downspouts that always fit flush to gutter, choose from five different sizes of Malco fine-toothed hole saws for safe, fast, clean cuts in thin walled and half round gutter. Combine these gutter saws with the combination Arbor and High Speed Pilot Drill for increased speed and production on the job-site!



**GOS2EV**  
70 mm (2.75 in.)

**GOS3EV**  
78 mm (3 in.)

**GOS4EV**  
90 mm (3.5 in.)

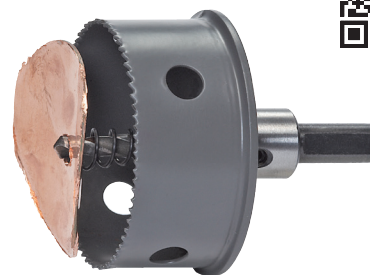
**GOS5EV**  
100 mm (4 in.)



**GOSA1EV**  
Combination Arbor and High Speed Pilot Drill, with Compression Spring Collar, to automatically eject metal slug.



10 High Speed Steel Teeth every 1 in. (25.4 mm)



**Clean cuts with compression spring ejection!**

For use with a 1/2 in. (13 mm) cordless or corded electric drill and Malco Combination Arbor and High Speed Pilot Drill. High speed steel teeth set at 10 per in. (25.4 mm) and a shallow 1 in. (25.4 mm) cutting depth ensure controlled cuts that will not grab or twist material even when cutting half round gutter (below).



This Combination Hole Saw Style Arbor and High Speed Steel Pilot Drill is specifically designed for use with Malco Gutter Outlet Saws. One universal threaded arbor quickly installs on any size Gutter Saw. The pilot drill bit projects only 7/16 in. (11 mm) out of the shallow gutter saw cup to ensure controlled, safe engagement of saw teeth for hole cuts in K-style and half round gutter. A tapered compression spring collar on the drill bit automatically ejects the metal slug.

### Quick-Action™ Gutter Outlet Saws

Catalog Number	Hole Diameter mm (in.)	Cutting Depth mm (in.)
<b>GOS2EV</b>	70 (2.75)	25.4 (1)
<b>GOS3EV</b>	78 (3)	25.4 (1)
<b>GOS4EV</b>	90 (3.5)	25.4 (1)
<b>GOS5EV</b>	100 (4)	25.4 (1)

### Combination Arbor & High Speed Pilot Drill

Catalog Number	Pilot Drill Bit	Arbor Shank mm (in.)	Drill Requirements
<b>GOSA1EV</b>	5.9 mm High Speed Steel	10 (13/32)	1/2 in (13 mm) Chuck

### Capacities



Aluminum - 0.43 - 0.81 mm (.017 - .032 in.)



Zinc Coated Aluminum - 0.46 mm (.018 in.)

Galvanized Aluminum - 0.58 mm (.023 in.)

Painted Steel - 0.53 mm (.021 in.)

Copper - 22 oz.