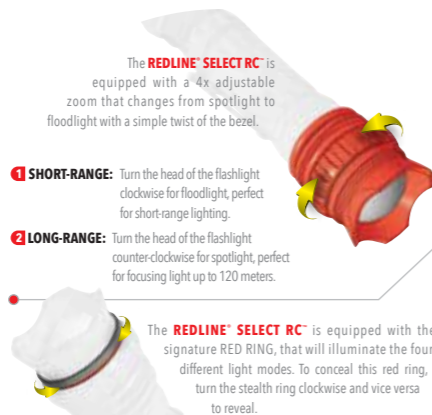


FLASHLIGHT OVERVIEW

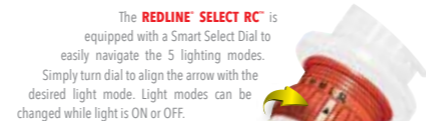


4X ADJUSTABLE ZOOM & STEALTH RING

The **REDLINE SELECT RC** is equipped with a 4x adjustable zoom that changes from spotlight to floodlight with a simple twist of the bezel.

- 1 SHORT-RANGE:** Turn the head of the flashlight clockwise for floodlight, perfect for short-range lighting.
- 2 LONG-RANGE:** Turn the head of the flashlight counter-clockwise for spotlight, perfect for focusing light up to 120 meters.

The **REDLINE SELECT RC** is equipped with the signature RED RING, that will illuminate the four different light modes. To conceal this red ring, turn the stealth ring clockwise and vice versa to reveal.



FIVE LIGHT MODES

- S - STROBE**
- H - HIGH**
- M - MEDIUM**
- L - LOW**
- SL - STEALTH LIGHT**

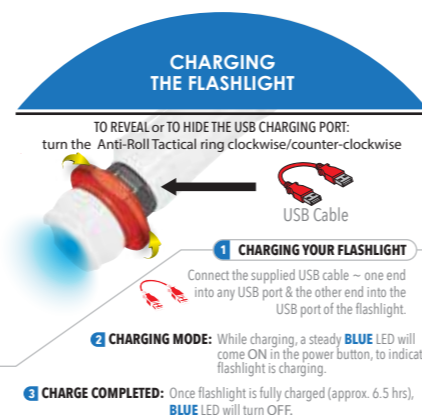
STROBE: For emergency situations and distress signaling, provides 2.5 hours of continuous use.

STEALTH LIGHT: Provides low signature GREEN light from the power button for low-profile, stealth mode.

RUN TIME & DISTANCE RATINGS

STROBE	HIGH	MEDIUM	LOW	STEALTH LIGHT
2.5 hrs	2.5 hrs	4.5 hrs	13 hrs	120 hrs
120 meters	120 meters	85 meters	40 meters	4 meters

LIGHT MODES & SPECIFICATIONS



CHARGING THE FLASHLIGHT

TO REVEAL or TO HIDE THE USB CHARGING PORT: turn the Anti-Roll Tactical ring clockwise/counter-clockwise



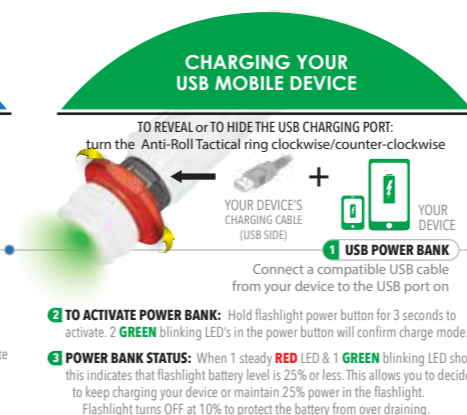
1 CHARGING YOUR FLASHLIGHT

Connect the supplied USB cable ~ one end into any USB port & the other end into the USB port of the flashlight.

2 CHARGING MODE: While charging, a steady BLUE LED will come ON in the power button, to indicate flashlight is charging.

3 CHARGE COMPLETED: Once flashlight is fully charged (approx. 6.5 hrs), BLUE LED will turn OFF.

4 TO USE LIGHT WHEN CHARGING: Before connecting USB cable, turn select dial to 'L' to activate LOW mode. Turn the dial to any other light mode to deactivate the light. Only LOW mode can be accessed during charging.



CHARGING YOUR USB MOBILE DEVICE

TO REVEAL or TO HIDE THE USB CHARGING PORT: turn the Anti-Roll Tactical ring clockwise/counter-clockwise



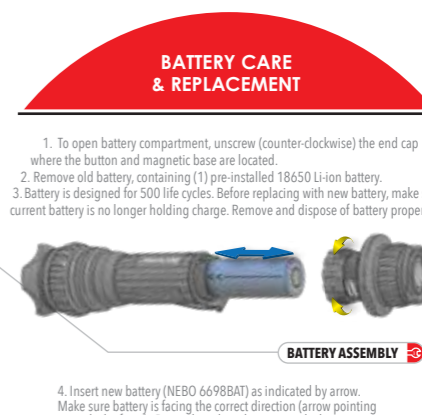
1 USB POWER BANK

Connect a compatible USB cable from your device to the USB port on

2 TO ACTIVATE POWER BANK: Hold flashlight power button for 3 seconds to activate. 2 GREEN blinking LED's in the power button will confirm charge mode.

3 POWER BANK STATUS: When 1 steady RED LED & 1 GREEN blinking LED shows, this indicates that flashlight battery level is 25% or less. This allows you to decide to keep charging your device or maintain 25% power in the flashlight. Flashlight turns OFF at 10% to protect the battery from over draining.

4 TO USE LIGHT WHEN CHARGING: Before connecting USB cable, turn select dial to 'L' to activate LOW mode. Turn the dial to any other light mode to deactivate the light. Only LOW mode can be accessed during charging.



BATTERY CARE & REPLACEMENT

1. To open battery compartment, unscrew (counter-clockwise) the end cap where the button and magnetic base are located.
2. Remove old battery, containing (1) pre-installed 18650 Li-ion battery.
3. Battery is designed for 500 life cycles. Before replacing with new battery, make sure current battery is no longer holding charge. Remove and dispose of battery properly.

BATTERY ASSEMBLY

4. Insert new battery (NEBO 6698BAT) as indicated by arrow. Make sure battery is facing the correct direction (arrow pointing towards the front). Reattach end cap by turning clockwise.

NOTE: Use only recommended battery type (NEBO 6698BAT). Use of any other battery will damage the product and void the warranty.



Experience the Quality difference.
Experience the NEBO difference.

WARRANTY COVERAGE

This product is guaranteed against all defects in workmanship and materials for the original owner for one year from the date of purchase. Damage to or failure of the flashlight or any component thereof due to alteration, misuse, battery leakage or lack of maintenance will void any and all guarantees. Damage by leakage of batteries should be taken up with the manufacturer of the battery using their damage claim instructions. For any additional information call 1-800-255-6061.

The Exporting or Re-Exporting of U.S. Controlled items without proper approval from the U.S. State or Commerce Departments is strictly prohibited.

All copyrighted and copyrightable materials, including, without limitation, the logo, design, text, graphics, pictures, copywriting and the selection and arrangement ("Materials") thereof are ALL RIGHTS RESERVED
Copyright © 2019 Alliance Sports Group L.P.

U.S. Patent: D 659,869 S

VISIT OUR WEBSITE TO SEE
OTHER GREAT NEBO® PRODUCTS!

www.nebotools.com

WARNING

AVOID EYE INJURY: Do not stare directly into beam or shine it directly into anyone's face. Doing so for more than a few seconds could cause retinal damage. Do not allow children to use LED lights unless under the supervision of an adult.



USER MANUAL



USB Cable + Lanyard