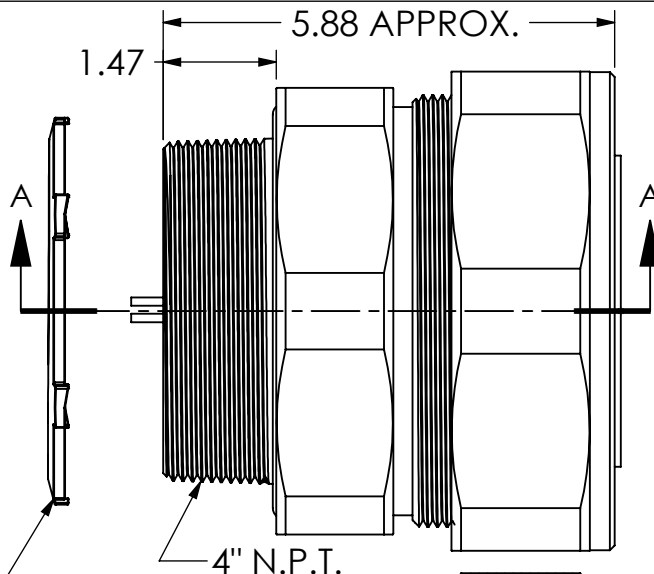
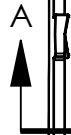


Ø 6.22
BODY



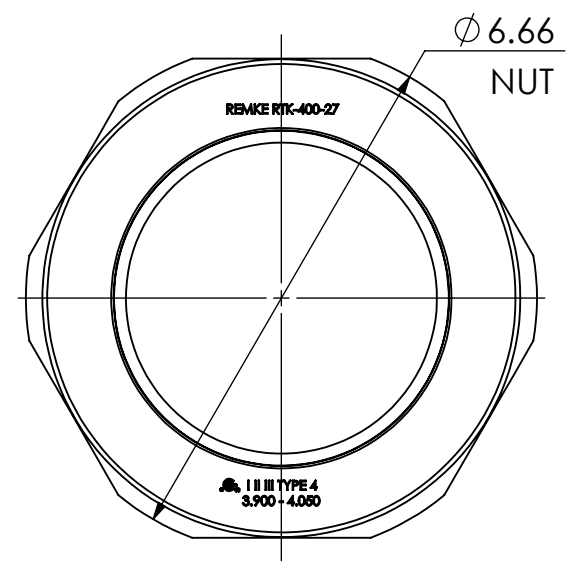
1.47 5.88 APPROX.



4" N.P.T.

LOCK NUT
OPTIONAL

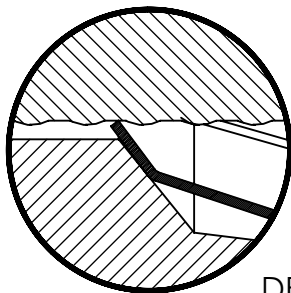
O-RING



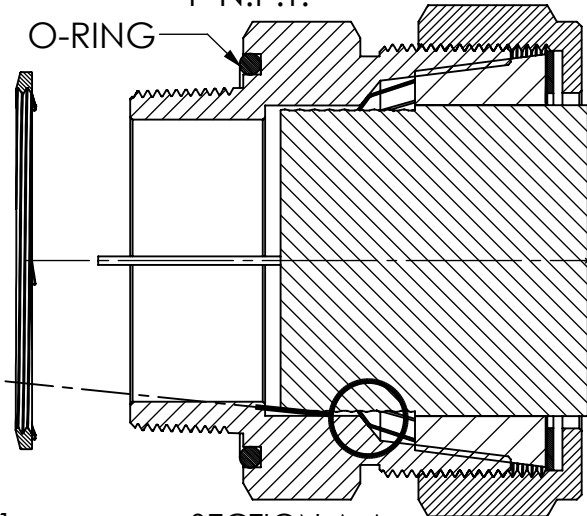
Ø 6.66
NUT

REMKE RTK-400-27

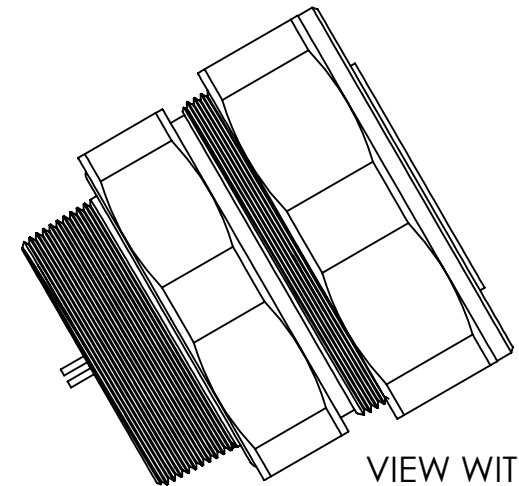
TYPE 4
3.900-4.050



DETAIL B
SCALE 1.5 : 1



SECTION A-A



VIEW WITHOUT
LOCK NUT

REV.	DATE	CHANGE	UNLESS OTHERWISE SPECIFIED:	NAME	DATE	REMKE REMKE INDUSTRIES 310 CHADDICK DR, WHEELING, IL. 60090	
A	12/3/13	RELEASED DRAWING	DIMENSIONS ARE IN INCHES TOLERANCES: FRACTIONAL $\pm 1/64$ ANGULAR: MACH $\pm 1^\circ$ BEND $\pm 1^\circ$ ONE PLACE DECIMAL $\pm .015$ TWO PLACE DECIMAL $\pm .010$ THREE PLACE DECIMAL $\pm .005$	DRAWN	JCN	12/13	TITLE:
			INTERPRET GEOMETRIC TOLERANCING PER:	CHECKED			
			MATERIAL	ENG APPR.			
			FINISH	MFG APPR.			
			DO NOT SCALE DRAWING	Q.A.			
				PROPRIETARY AND CONFIDENTIAL THE INFORMATION CONTAINED IN THIS DRAWING IS THE SOLE PROPERTY OF REMKE INDUSTRIES. ANY REPRODUCTION IN PART OR AS A WHOLE WITHOUT THE WRITTEN PERMISSION OF REMKE INDUSTRIES IS PROHIBITED.			SIZE A DWG. NO. RTKSS-400-27
							SCALE: 1:2.5 SHEET 1 OF 1

5

↑

4

3

2

1