

Aluminum Neutral Bars - 4-14(12112)

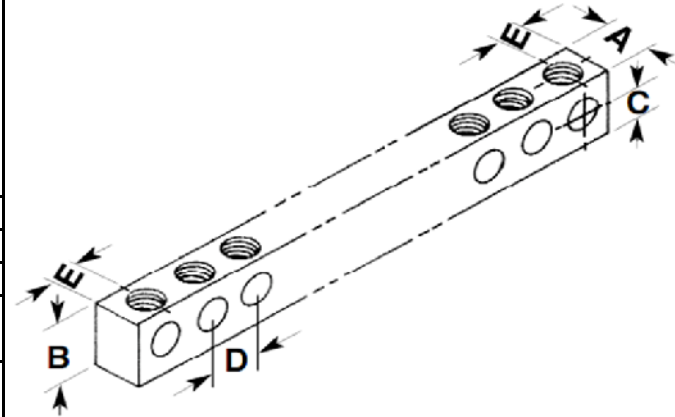
Multiple connectors are made from either copper or aluminum bar and can be used in a variety of neutral and grounding applications. The aluminum connectors are tin plated for low contact resistance and are suitable for use with copper and or aluminum conductors.

Drawn - SD

Approved - KM

Material - Aluminum Bar / Steel Screws

Title - Aluminum Neutral Bar



Part Number	Wire Range	A	B	C	D	E
4-14(12112)	4-14 AWG	0.3150	0.4410	0.2150	0.3400	0.1690