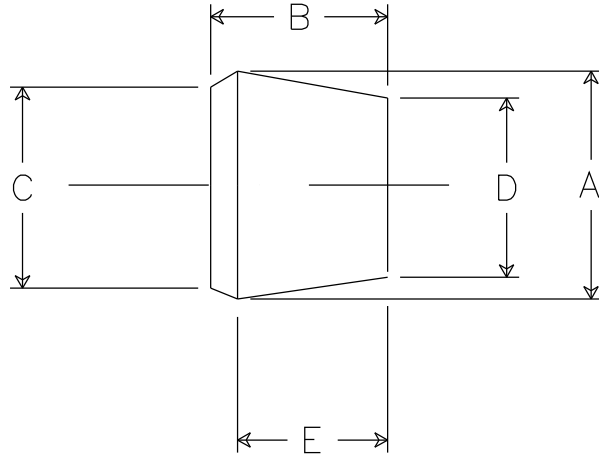


DIMENSIONS

A 1.125  
B 0.875  
C 1.031  
D 0.875  
E 0.750



NOTE: TWO HOLES .296 DIA. EVENLY  
SPACED ON A .350 DIA CIRCLE  
HOLE SIZE +/- .010

NOTES:

- 1.0 ANGULAR TOLERANCE +/- 1/2 DEGREE
- 2.) FLASH TO BE HELD TO A MINIMUM  
AND MAY NOT WEBB ACROSS HOLE DIA.
- 3.) 1D/OD CONCENTRICITY WITHIN .20
- 4.) ALL OTHER DIM +/- .015

**REMKE INDUSTRIES**  
*Wheeling, Illinois 60090*

SCALE: APPROX FULL  
MATERIAL: NEOPRENE 50-60 DUROMETER  
FINISH: NATURAL BLACK  
PART NAME: BUSHING  
PART NUMBER: SRB-201964-2  
DRAWING DATE: 5/22/03