

Furrion TV

Manufacturer	Furrion
Model	Furrion Outdoor TV's - All
Driver Name	FurrionTV
Driver Version	23.06.30.00
Document / Driver Revision	June 30, 2023
Core Min / Max Tested	8.7.605 / 8.8.33

Note about Elan OS 8.8 / 8.7

The driver has two versions. Each is located under its OS version folder with the same name. The same name makes it easier to upgrade from 8.7 to 8.8 without reinstallation.

Install from the folder matching the Elan OS on the controller.

If you install under 8.7 and upgrade to 8.8, update the driver as well so it will have the supported features.

Overview & Supported Features

This is a driver to control and get feedback from Furrion TV.

THE FOLLOWING OPTIONS ARE SUPPORTED BY [THIS DRIVER]:

- Install Devices as a Display Driver
- Updating the driver if changes happen outside of Elan.
- Turn TV On / Off
- Volume Up/Down
- Input/Source
- Launch Channels from Elan
- Customize Channel Buttons for the Viewer
- Custom polling time for heartbeat function
- THE FOLLOWING PLAYBACK OPTIONS ARE NOT SUPPORTED BY [THIS DRIVER]:

Any feature not specifically noted as supported should be assumed to be unsupported.

Device Setup

We highly recommend using a wired connection. Wireless can turn off and give spotty performance.

Make sure that Network IP Control is on.

Turn on IP Control on the Furrion TV

Using the IR Remote:

Settings >> Menu >> General >> Highlight Network then Input "82888" using Key Code

If "82888" does not work, try "73777"

Activate Network IP Control and Wake-On LAN

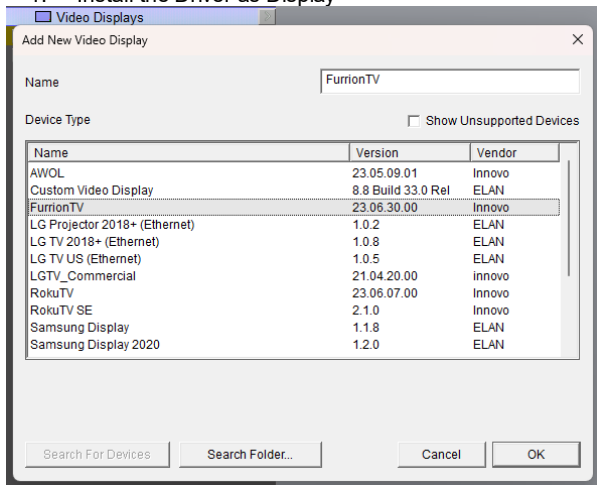
Installation Process

It is recommended that you follow the below installation process in order to ensure you are running the latest version of the driver.

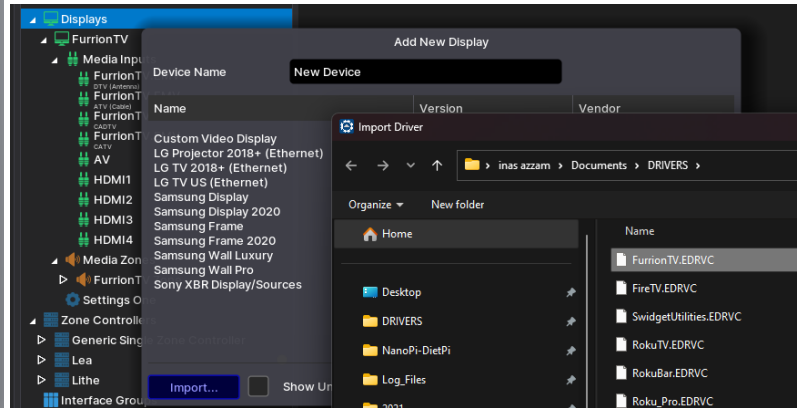
The Driver has two Drivers files. Install the driver matching the controller OS from the appropriate folder

NOTE: On First Install, Make sure the TV is powered on.

1. Install the Driver as Display

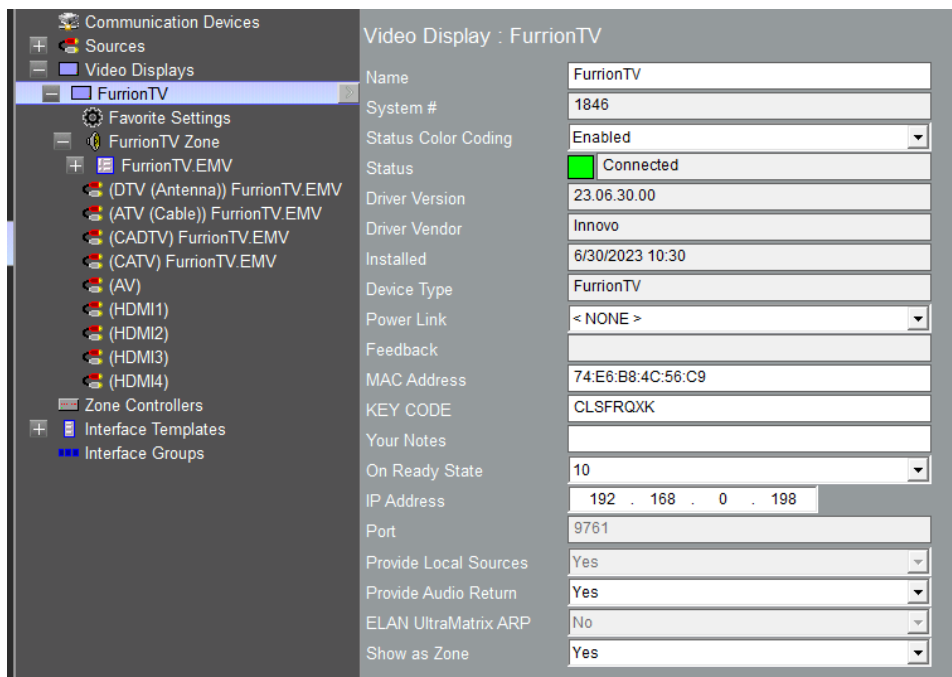


8.7 Install



8.8 Install → Display → Import → Driver Folder

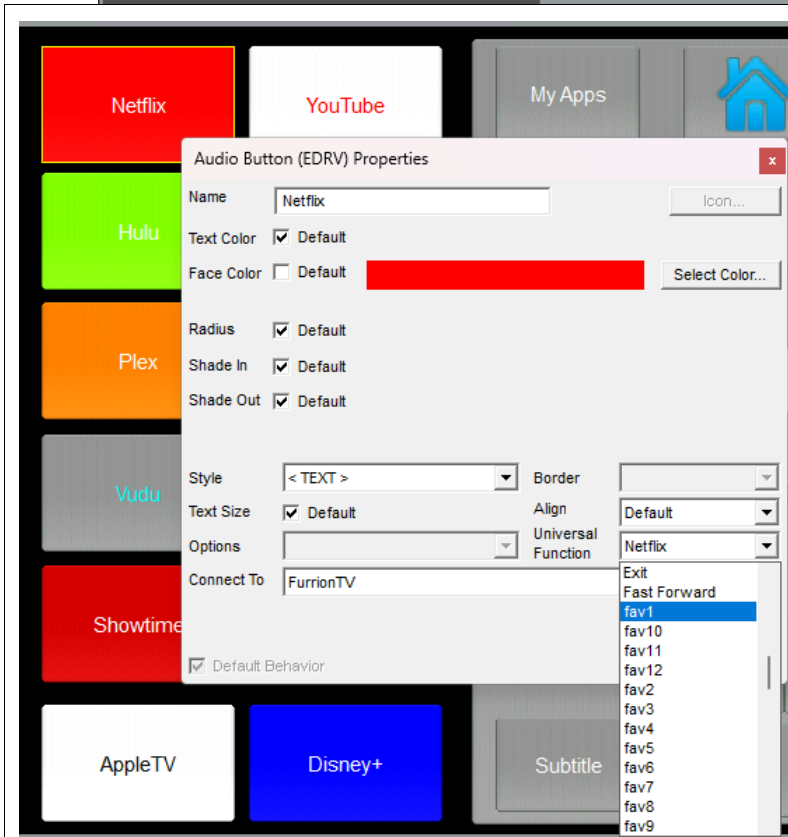
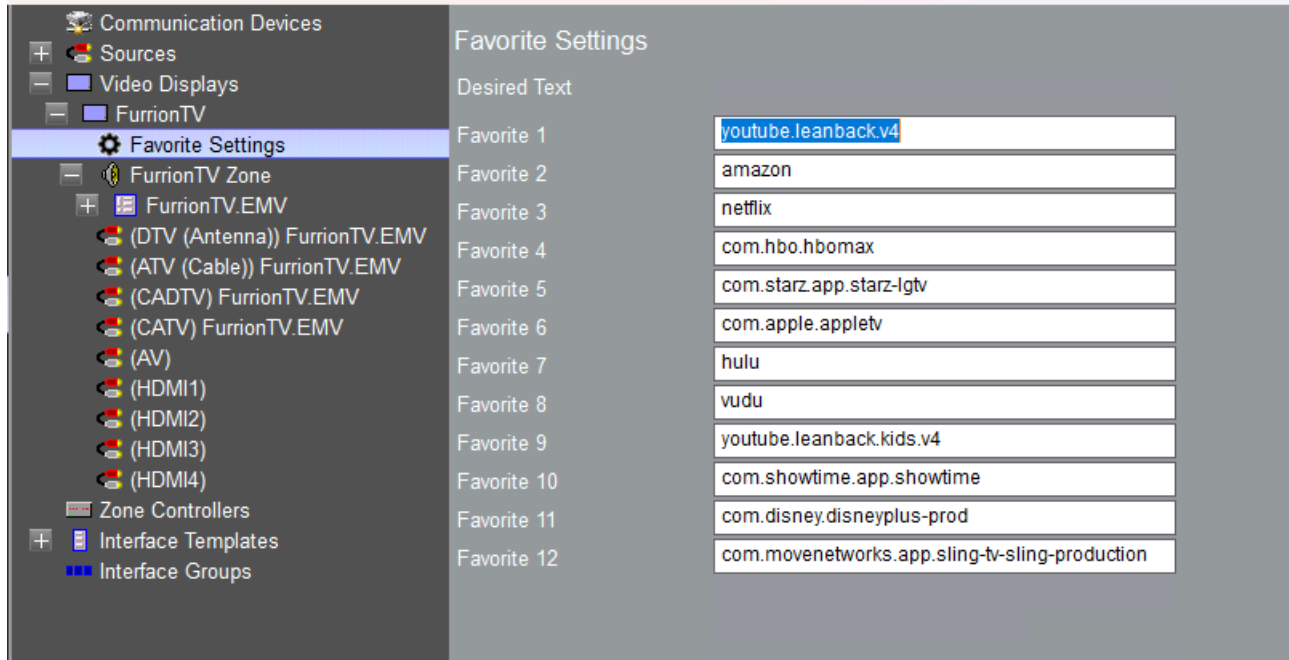
2. Enter IP Address, MAC address of the wired or wireless connection the TV is using to connect to the network. **Use Wired or Wireless combination. Wired is highly recommended.**
3. Enter the pairing code.
 - a. Using the IR Remote:
 - i. Settings >> Menu >> General >> Highlight Network then Input "82888" using Key Code
 - ii. If "82888" does not work, try "73777"
4. Set the Ready State timeout. This is the time the TV needs to start and access the network. 10 is default.



Favorite Settings

The Driver has a default set of Channels (Apps) pre-coded. If the Channel (App) is installed on the TV it will launch when the button is pressed.

To add custom channels, Click on Favorite Settings and Fill in the Channel ID. This is a specific channel id and the format differs for every channel. Reach out to Innovo Tech Support to find out any special channels.



To connect the channel to an icon, click on the FurrionTV.EMV and connect the button to Fav1 – Fav 12. This will launch the channel in the settings page.

Change the Name to fit the Channel

Using the Driver

Select the Zone



The Apps tab is used to mainly navigate apps.



The Live TV is used to navigate LiveTV channels

