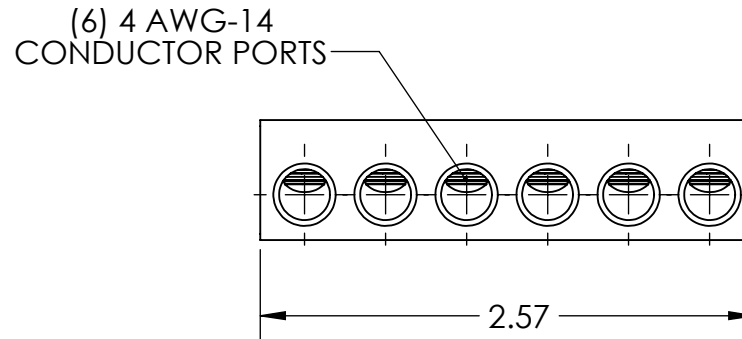
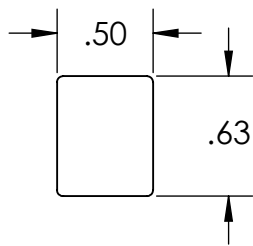
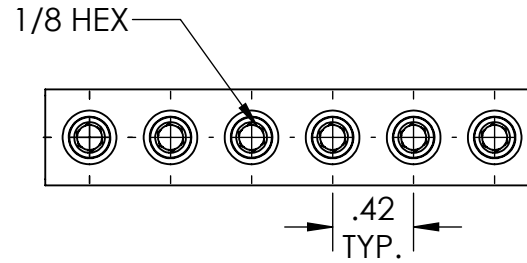
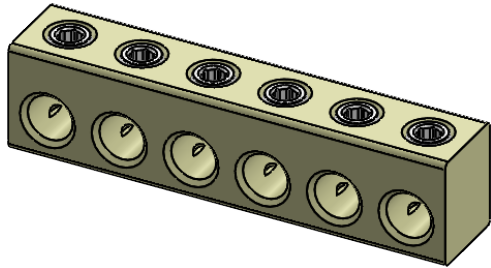


|                   |                 |
|-------------------|-----------------|
| <b>PROGRAM:</b>   | SOLIDWORKS      |
| <b>UPDATED:</b>   | 11/19/2024      |
| <b>SALES REV:</b> | A               |
| <b>SIZE:</b>      | A (8.5x11) (IN) |



### FEATURES:

1. Material: Yellow Chromated Aluminum.
2. Wire connector rated for 35Kv max.
3. Class B/C compressed, concentric, and compact conductor only.
4. Dual rated AL9CU.

