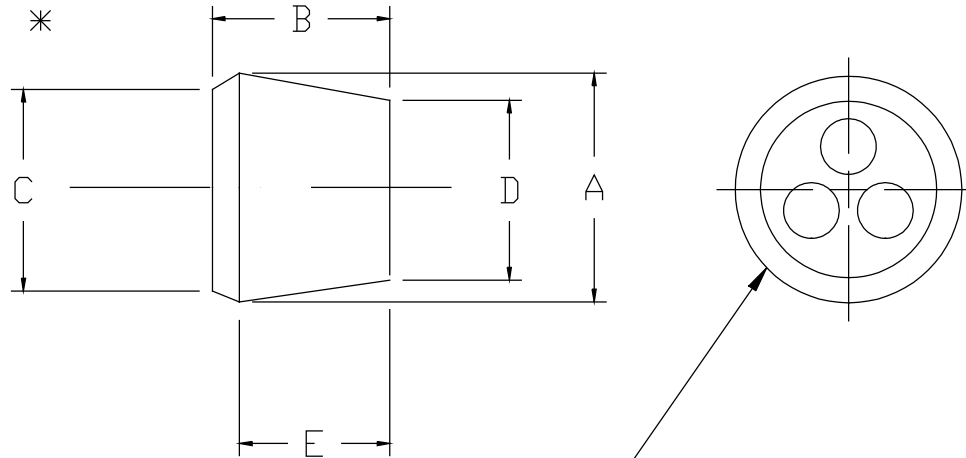


* INDICATES CRITICAL INSPECTION DIMENSIONS

DIMENSIONS

A	1.125	NOMINAL	+/- .015 *
B	0.875		+/- .020 *
C	1.031		+/- .015 *
D	0.875	REF.	
E	0.750	REF.	



* NOTE: THREE HOLES .281 EVENLY SPACED ON A .416 DIA CIRCLE
HOLE SIZE +/- .010

NOTES:

- 1.) ANGULAR TOLERANCE +/- 1/2 DEGREE
- 2.) FLASH TO BE HELD TO A MINIMUM AND MAY NOT WEBB ACROSS HOLE DIA.
- 3.) ID/OD CONCENTRICITY WITHIN .020

REV. B 7/28/00 ADDED TOLERANCE TO DIMS. A-B-C

REV. A 5-30-00 ADD NOTE ON TOLERANCE

REMKE INDUSTRIES
Wheeling, Illinois 60090

SCALE: APPROX FULL
MATERIAL: NEOPRENE 50-60 DUROMETER
FINISH: NATURAL BLACK
PART NAME: BUSHING
PART NUMBER: SRB-20932-3
DRAWING DATE: 970604