

# **PRO-Strike™ Punchdown Tool**

Precise terminations.  
Maximum performance.  
Ergonomic handle.



**The new PRO-Strike** Punchdown Tool combines rugged design, an ergonomic comfort grip handle and enhanced functions. The primary tool for all telecom and datacom installers working with 110, 66, Krone and BIX™ style cross connects. This professional tool will provide precise, repeatable and reliable terminations that helps ensure installations pass certification and your peace-of-mind.

- Terminate and cut Cat3/5/5e/6 cables
- Spring loaded for fast, low effort wire seating and termination
- Bayonet style (twist & lock) blade retention socket is compatible with industry standard tools and blades
- New built-in hook – feeds or removes wire
- New multi-use spudger – for screwdriver, IDC insert tool or to clean debris
- 110, 66, 630, Krone and BIX™ style interchangeable blades
- Color coded yellow on the cut side of the tool per industry standard
- Adjustable low and high force impact settings are precisely controlled to meet the industry standard 8762D spec
- Will not damage sensitive circuitry
- Spare blade storage compartment in the handle

## **Application**

- Terminate and trim wires in 66, 110, Krone and BIX™ style cross connect blocks
- Terminate and trim wires in 110 & 630 style wall jack modules

## **Technical Data**

- Dimensions: 6" x 1.5" x 1" (152 x 38 x 25mm)
- Weight: 5.7oz (162g)

*See reverse for more information*

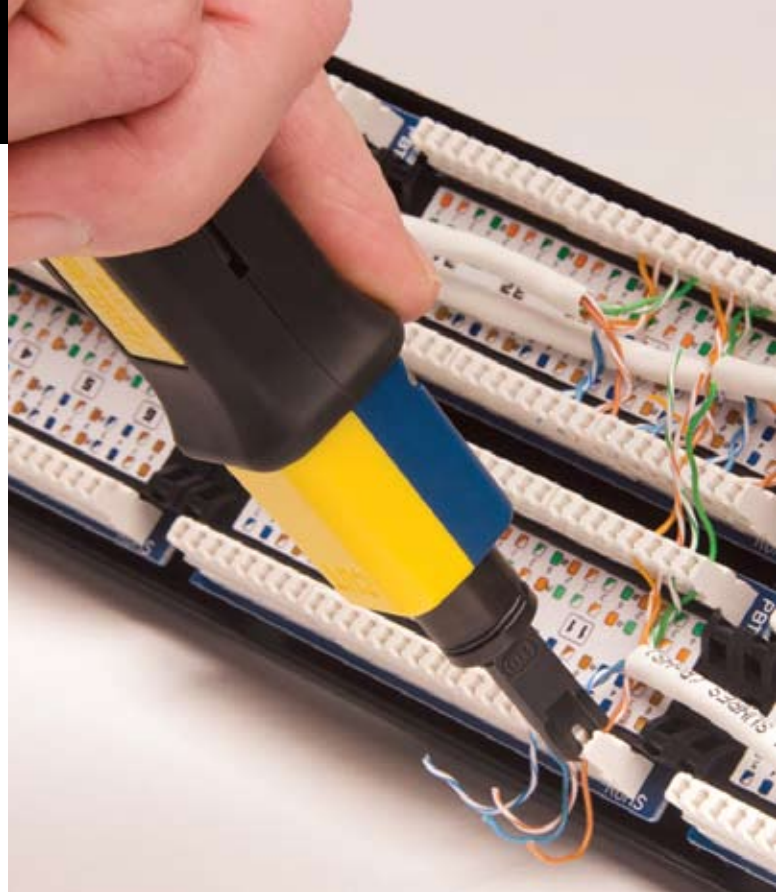
Phone: 800.749.5783  
Fax: 800.749.5784

806 Calle Plano  
Camarillo, CA 93012  
[www.platinumtools.com](http://www.platinumtools.com)

***We Make Connections EZ!***

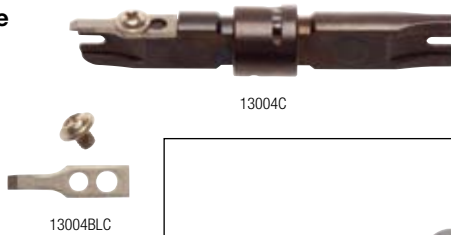
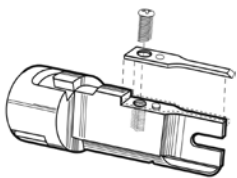
# Punchdown Blades

Quality you demand. All blades and accessories are manufactured from high-carbon, tool grade steel and heat treated for durability.



## 110 EZ-Data Cut Blade

Easily replace cutting knives.



Bayonet style (twist & lock) blade retention socket is compatible with industry standard tools and blades.



## Ordering Information:

Tool/Blade Combinations	P/N	UPC CODE
PRO-Strike Punchdown Tool, handle only	13150C	849160006466
PRO-Strike Punchdown Tool, w/66 blade	13155C	849160006473
PRO-Strike Punchdown Tool, w/110 blade	13156C	849160006480
PRO-Strike Punchdown Tool, w/66 & 110 blades	13157C	849160006497
PRO-Strike Punchdown Tool, w/66/110 Combo blade	13159C	849160006503

## Blades and Accessories

66 Style blade	13001C	899740000193
110 Style blade	13002C	899740000209
630 Style blade	13003C	899740000216
110 Style EZ Data Cut blade	13004C	899740000704
110 Style EZ Data Cut blade replacement knives (3 pk)	13004BL-C	899740001299
66/110 Combo blade	13021C	899740001305
Punchdown Tool Extension	13022C	899470001343
BIX™ Style blade	13023C	899470001459
Krone Style blade	13024C	899740001466

# PLATINUM TOOLS®

Phone: 800.749.5783

Fax: 800.749.5784

806 Calle Plano  
Camarillo, CA 93012

[www.platinumtools.com](http://www.platinumtools.com)

## We Make Connections EZ!