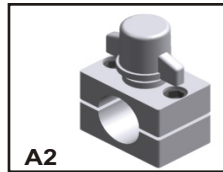
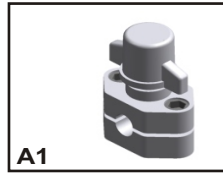


**INSTRUCTIONS FOR INSTALLING
THE A-1 & A-2
LINE TAP VALVE**



1. Remove winged cap "A".
2. Remove socket head screws "D".
3. Position both halves of valve on the tube using proper inserts "E" or "F" insuring that the special compound o-ring "G" is in position under the top assembly to prevent tube from leaking. .
4. Replace socket head screws and tighten evenly.
5. Insert depressor pin "B" in head of needle "C".
6. Replace winged cap and turn down hand tight. This will depress the spring loaded needle and pierce the line.
7. Remove winged cap and depressor pin. The needle will automatically retract. DISCARD THE DEPRESSOR PIN.



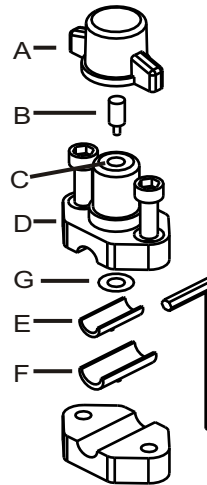
TO SERVICE

Attach a charging hose with a depressor fitting to the valve port. When servicing is completed and the charging hose is removed, the valve will close. Replace the winged cap for added protection.

HOW TO USE INSERTS

Product A-1:
for 1/4", 5/16" and 3/8" OD.
1. For 1/4" OD. tube use insert "E".
2. For 5/16" OD. tube use insert "F".
3. For 3/8" OD. tube use no inserts.

Product A-2:
for 1/2" and 5/8" OD.
1. 1/2" OD tube use insert provided.
2. 5/8" OD. tube use no insert.

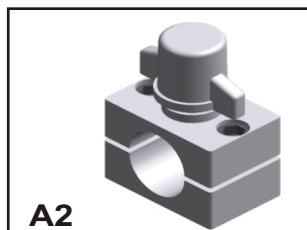
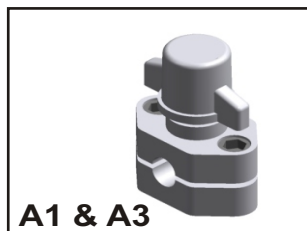


*Sealed Unit Parts Co., Inc,
2230 Landmark Pl. Allenwood, NJ 08720
(732) 223-6644
www.supco.com*

INSTRUCTIONS FOR INSTALLING THE A-1 & A-2 & A-3 LINE TAP VALVE

U.S. Pat. No. 4,018,246 and 4,611,624

1. Remove winged cap "A".
2. Remove socket head screws "D".
3. Position both halves of valve on the tube using proper inserts "E" or "F" insuring that the special compound o-ring "G" is in position under the top assembly to prevent tube from leaking. .
4. Replace socket head screws and tighten evenly.
5. Insert depressor pin "B" in head of needle "C".
6. Replace winged cap and turn down hand tight. This will depress the spring loaded needle and pierce the line.
7. Remove winged cap and depressor pin. The needle will automatically retract. DISCARD THE DEPRESSOR PIN.



TO SERVICE

Attach a charging hose with a depressor fitting to the valve port. If you prefer controlled charging, attach a CA-1 valve. When servicing is completed and the charging hose is removed, the valve will close. Replace the winged cap for added protection.

HOW TO USE INSERTS

Product A-1:

for 1/4", 5/16" and 3/8" OD.

1. For 1/4" OD. tube use insert "E".
2. For 5/16" OD. tube use insert "F".
3. For 3/8" OD. tube use no inserts.

Product A-2:

for 1/2" and 5/8" OD.

1. 1/2" OD tube use insert provided.
2. 5/8" OD. tube use no insert.

Product A-3

for 3/16" and 1/4" OD.

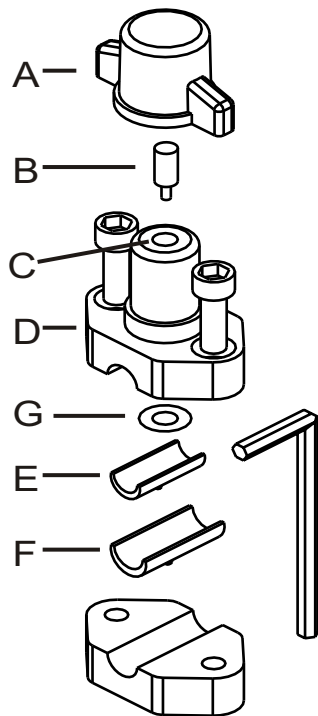
1. For 3/16" OD. tube use insert provided.
2. For 1/4" OD. tube use no insert.

Henry Technologies, Inc.

701 S. Main Street Chatham, IL 62629

(217) 483-2406

www.henrytech.com

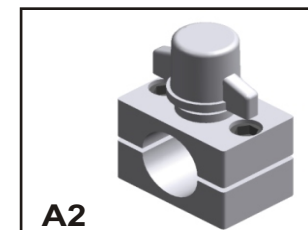
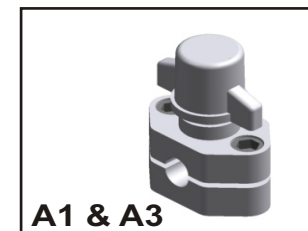


163086

INSTRUCTIONS FOR INSTALLING THE A-1 & A-2 & A-3 LINE TAP VALVE

U.S. Pat. No. 4,018,246 and 4,611,624

1. Remove winged cap "A".
2. Remove socket head screws "D".
3. Position both halves of valve on the tube using proper inserts "E" or "F" insuring that the special compound o-ring "G" is in position under the top assembly to prevent tube from leaking. .
4. Replace socket head screws and tighten evenly.
5. Insert depressor pin "B" in head of needle "C".
6. Replace winged cap and turn down hand tight. This will depress the spring loaded needle and pierce the line.
7. Remove winged cap and depressor pin. The needle will automatically retract. DISCARD THE DEPRESSOR PIN.



TO SERVICE

Attach a charging hose with a depressor fitting to the valve port. If you prefer controlled charging, attach a CA-1 valve. When servicing is completed and the charging hose is removed, the valve will close. Replace the winged cap for added protection.

HOW TO USE INSERTS

Product A-1:

for 1/4", 5/16" and 3/8" OD.

1. For 1/4" OD. tube use insert "E".
2. For 5/16" OD. tube use insert "F".
3. For 3/8" OD. tube use no inserts.

Product A-2:

for 1/2" and 5/8" OD.

1. 1/2" OD tube use insert provided.
2. 5/8" OD. tube use no insert.

Product A-3

for 3/16" and 1/4" OD.

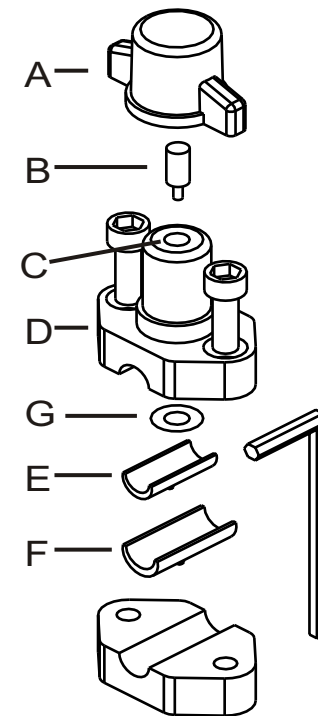
1. For 3/16" OD. tube use insert provided.
2. For 1/4" OD. tube use no insert.

Henry Technologies, Inc.

701 S. Main Street Chatham, IL 62629

(217) 483-2406

www.henrytech.com



163086