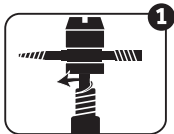
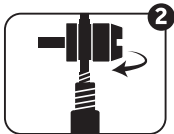


HOW TO USE



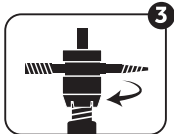
REMOVE VALVE CORE

Insert into the valve core,
untwist to remove.



FIX INSIDE VALVE THREADS

Twist inside the valve
to re-tap threads.



FIX OUTSIDE VALVE THREADS

Twist on the valve
to re-tap threads.



CLEAN VALVE

Insert into the valve,
move around, remove
and replace valve core.