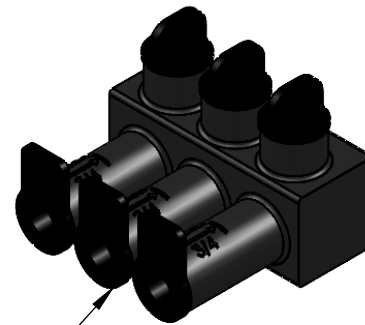


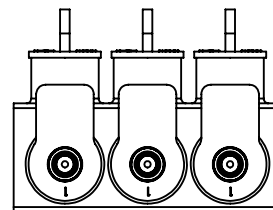
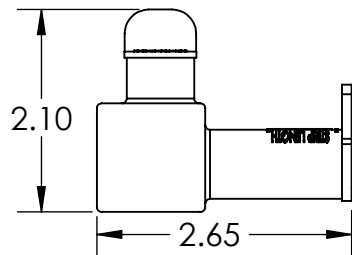
REMOVAL BE CAPS FOR ACCESS TO 3/16 INTERNAL HEX PRESSURE SCREWS



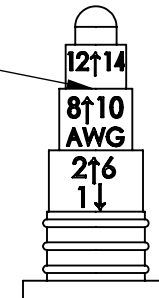
2/0 - #14 AWG CONDUCTOR PORTS
ROCKET USED FOR #1-#14
DISCARD ROCKET FOR 1/0-2/0

TORQUE CHART

WIRE RANGE	TORQUE (IN-LBS)
#10-#14	35
#8	75
#6-2/0	120




CUT ROCKET AT APPROPRIATE STEP FOR WIRE SIZE USED



ISPB2/0-3 SHOWN

PART NO.	NO. OF COND. HOLES	LENGTH
ISPB2/0-2	2	1.93
ISPB2/0-3	3	2.79
ISPB2/0-4	4	3.65
ISPB2/0-6	6	5.37

CONTACT NSI FOR SALES @ 800.321.5847



POLARIS
SALES . CO . INC

PROPRIETARY AND CONFIDENTIAL		11625 PROSPEROUS DRIVE ODESSA, FL 33556	
THE INFORMATION CONTAINED IN THIS DRAWING IS THE SOLE PROPERTY OF POLARIS SALES CO. INC. ANY REPRODUCTION IN PART OR AS A WHOLE WITHOUT THE WRITTEN PERMISSION OF POLARIS SALES CO. INC. IS PROHIBITED.		TITLE: 2/0-#14 STREET LIGHT CONN.	
DRAWN BY	NAME	DATE	DWG. NO.
L. HILL	L. HILL	2/23/2022	ISPB2,0-
MATERIAL: N/A		SCALE: 1:1	SHEET: 1 OF 1

NOTES:

1. DI-ELECTRIC SILICONE FILM ON ROCKET AND CAP FOR EASY ASSY/DISSY.
2. PRE-FILLED W/ OXIDE INHIBITOR.
3. SHIPPED IN SEALED BAG W/ INSTALL INSTRUCTIONS.