

CABIN

SKU: 472059 **MAP:** \$699.99

FEATURES

- Stylish, fabric-covered, multiroom-exclusive Inside Antenna.
- Powerful, precision-mount Outside Antenna.
- 24-foot telescoping pole for extending antenna over obstructions to pinpoint the nearest cell tower.
- Enhance cell coverage for multiple devices in up to 3 large rooms.
- Eliminate dropped calls and increase data speeds for streaming and scrolling.
- Works on all cellular devices and network carriers.



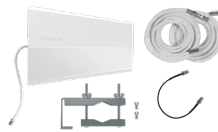
KIT INCLUDES



Signal Booster, Bracket & Power Supply



Inside Antenna, Bracket & 30 ft. Cable



Outside Antenna (314445), Mounting Bracket, (2) 15 ft. Cables & Window Entry Cable



Telescoping Mounting Pole (900071 extends to 24 feet), Wall Mount Brackets, Top Stabilizer & Pole Foot

ABOUT

The **Cabin** is our most powerful cell signal booster designed for bridging the gap between signal and solitude in off-grid abodes. Powerful enough to support multiple devices, the Cabin reduces dropped calls and enhances data speeds — making it perfect for work, play, and staying connected in an emergency. The system includes an all new high performance inside antenna and rugged weather-resistant directional outside antenna mounted on a 24-foot telescoping pole for targeting nearby cell towers without obstruction. Cabin is 5G ready and provides maximum signal inside your remote residence.

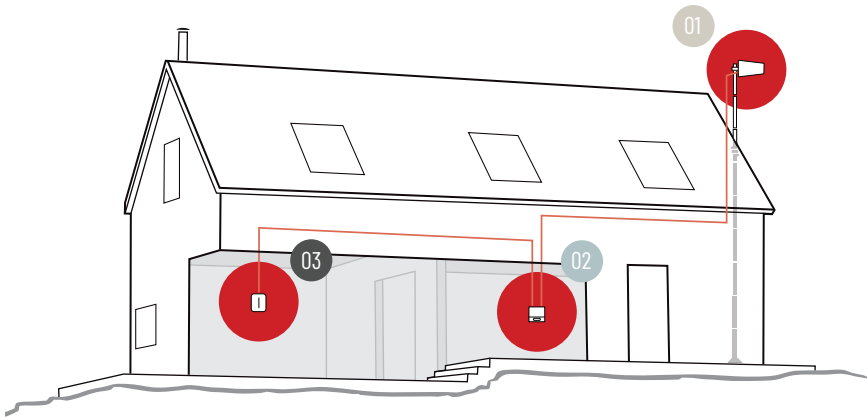
Like all weBoost products, Cabin is approved by the FCC and is backed by a 2-year warranty.

SPECIFICATIONS

MODEL NUMBER	472059*	
FREQUENCIES	Band 12/17	700 MHz
	Band 13	700 MHz
	Band 5	850 MHz
	Band 4	1700/2100 MHz
	Band 25/2	1900 MHz
MAX GAIN	65 dB	
IMPEDANCE	75 Ohm	
POWER	4.5V DC	
CONNECTORS	F Female	
BOOSTER DIMENSIONS	6 × 6 × 1.6 in.	
BOOSTER WEIGHT	1.9 lbs.	

⚠️ WARNING: This product can expose you to chemicals including Nickel, which is known to the State of California to cause cancer, and Bisphenol A, which is known to the State of California to cause birth defects or other reproductive harm. For more information go to www.P65Warnings.ca.gov

HOW IT WORKS



- 01 **Outside antenna:** The outside antenna communicates back and forth with nearby cell towers.
- 02 **Booster:** The booster amplifies any cell signals it receives from the outside antenna.
- 03 **Inside antenna:** The inside antenna broadcasts these signals.

PACKAGE DIMENSIONS

48 L x 9.25 W x 8.5 H



FRONT



SIDE



TOP/BOTTOM



WEIGHT

SUPPORT



2-Year Warranty from Purchase.

Website: <http://support.weboost.com>

Phone: +1 866 294 1660

Monday to Friday



FOR PARTNER'S USE

UPC

