

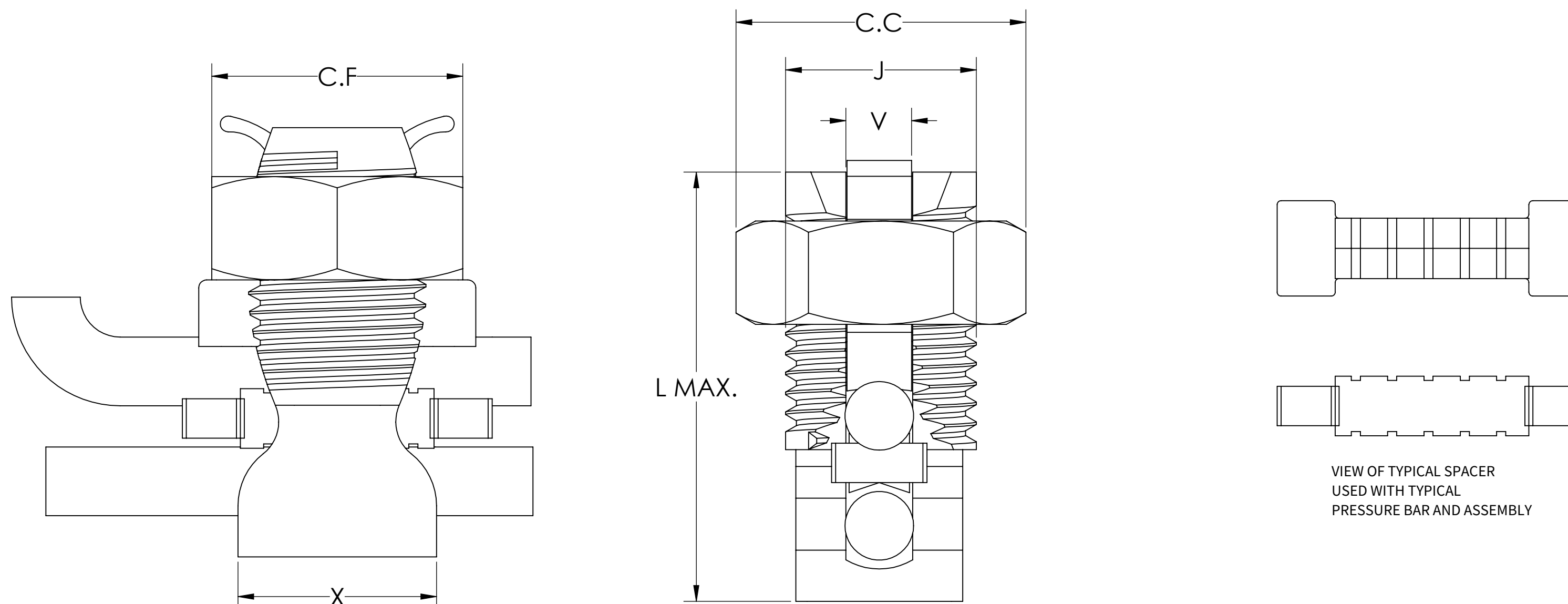
Features:

1. MATERIAL: COPPER
2. FINISH: TIN PLATED
3. ALL SIZES ARE UL 486B LISTED. FILE NO. E9498.
4. ALL SIZES ARE CSA C22.2 NO. 65 LISTED. FILE NO. 42862 & 42682-C40



PROGRAM:	SOLIDWORKS
UPDATED:	10/2024
SALES REV:	B
SIZE:	C

N-SP Series: Copper Tin Plated With Spacer Dual Rated Split Bolts



CAT NO.	J	L MAX.	V	X (A/F)	C.C (A/F)	T (THREAD TYPE)	CONDUCTOR		MIN TAP WITH ONE MAX MAIN	ACSR		WIRE DIAMETER RANGE (IN)	RECOMMENDED TORQUE (LB-IN)
							RANGE OF EQUAL MAIN & TAP			RANGE OF MAIN OR TAP			
							MIN	MAX		MIN	MAX		
N-6SP	.47	1.06	.165	.41	.625	M12X1.25	14 STR	8 STR	14 STR	-	8	.073 - .146	165
N-4SP	.63	1.24	.27	.58	.81	M16X1.5	10 STR	6 STR	10 SOL	-	6	.116 - .184	165
N-3SP	.67	1.44	.31	.61	.87	M17X1.5	8 SOL	3 STR	8 SOL	6	4	.128 - .258	275
N-2SP	.67	1.44	.31	.61	.87	M17X1.5	8 SOL	2 STR	8 SOL	6	2	.128 - .316	275
N-1/OSP	.79	1.73	.37	.77	1.0	M20X1.5	6 SOL	1/0 STR	10 SOL	6	1	.162 - .375	385
N-2/OSP	.83	1.71	.42	.81	1.06	M21X1.5	6 STR	2/0 STR	10 STR	6	1/0	.184 - .419	385
N-3/OSP	1.02	2.13	.53	.98	1.25	M26X2.0	4 STR	3/0 STR	6 SOL	6	2/0	.198 - .470	500
N-250SP	1.06	2.22	.58	1.06	1.37	M27X2.0	4 STR	250 MCM	4 STR	4	4/0	.232 - .575	650
N-350SP	1.26	2.56	.70	1.18	1.5	M32X2.0	3/0 STR	350 MCM	1 SOL	2/0	350	.447 - .682	650
N-500SP	1.42	2.95	.81	1.33	1.75	M36X2.0	3/0 STR	500 MCM	1/0 STR	2/0	477 18/1	.447 - .815	825
N-750SP	1.88	3.51	1.02	1.94	2.31		250 MCM	750 MCM	2/0 STR	4/0	666.6	.563 - .999	1000
N-1000SP	2.125	3.90	1.17	2.19	2.56		350 MCM	1000 MCM	4/0 STR	300	900	.682 - 1.162	1100

