

MECHANICAL CONNECTORS

BUILT FOR STRENGTH, RELIABILITY AND EFFICIENCY

Polaris Mechanical Connectors are the easy choice for professionals who need reliable, durable performance. Our comprehensive line of mechanical connectors bring the high standards of Polaris to several new categories, making cost-effective connections that are quick to install and built to last.



A SOLUTION FOR YOUR APPLICATION

Polaris Mechanical Connectors are a simple solution to your connectivity needs, forming secure and robust connections between multiple wires. These highly-conductive, versatile, dual-rated connectors are available in a variety of configurations including aluminum and copper lugs, IPCS, neutral assemblies, terminal blocks, split bolts and distribution blocks. Polaris connectors are built from superior materials and designed to excel in demanding installations.

DESIGNED FOR EASY INSTALLATION

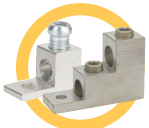
Mechanical connectors are a cost-effective and extremely durable choice for a huge range of installations, forming secure joins for multiple wires in a single junction. Each style of connector, from our dual-rated lugs to our reliable distribution blocks, was designed with installers in mind. Work faster without compromising quality when you install Polaris Mechanical.



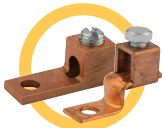
Scan for more
information

MULTIPLE CONFIGURATIONS

ALUMINUM
CONNECTORS



COPPER
CONNECTORS



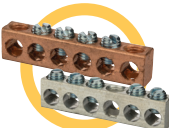
SPLIT BOLT
CONNECTORS



INSULATION
PIERCING



NEUTRAL
ASSEMBLIES



NON-METALLIC
CONNECTORS



INSULATION PIERCING CONNECTORS - DUAL RATED

FEATURES

- Safe to use, versatile and reliable
- No need to strip wire and totally insulated
- No tape or cover needed
- No contact at any point with a live part
- Can be installed on energized conductors
- No spacer required between connections
- Exclusive "turbo spacer" keeps tap side open while main conductor is being tightened
- No need for a third hand to install
- Watertight and corrosion-free
- Connection sealed by a rubber grommet
- No migration of water
- No contamination between main and tap
- Connectors handle a large wire range of #14awg to 750mcm
- Double shear-head bolts ensure perfect connection every time Hot spots eliminated
- Can be used as a splice or a tap
- Easy to install and no special tools required
- For copper-to-copper, copper-to-aluminum and aluminum-to-aluminum applications
- Suitable for solid and/or stranded wires
- 4 sizes are approved for use with bare wire (from 4/0 to #10) - these connectors come with a blue insert which re-creates the insulation and avoids any damage to the conductor
- All sizes can be installed on energized main conductor, however, the tap must not be under load.

SPECIFICATIONS

- UL486A/B Listed Wire Connector
- Meets ANSI C119.4 requirements
- Temperature Rating: 90 °C
- Voltage: 600V



SPECIFICATIONS

IPCS-SERIES

CAT. NO.	UL LISTED	CONDUCTOR RANGE		CURRENT RATING		HEIGHT (IN)	WIDTH (IN)	LENGTH (IN)	NO. OF BOLTS	STD. PACK QTY.	STD. CTN. QNT.
		MAIN AWG	TAP AWG	CU AMP	AL AMP						
IPCS2001*	Yes	2/0 - 4	10 - 14	55	40	3.000	1.800	2.200	1	1	6
IPCS7501*	Yes	750 - 3/0	10 - 14	55	40	3.700	2.400	2.600	1	1	6
IPCS1002	No	1/0 - 8	2 - 10	190	150	3.100	1.800	2.200	1	1	6
IPCS1010	No	1/0 - 8	1/0 - 8	190	150	3.100	1.800	2.200	1	1	6
IPCS4002*	Yes	4/0 - 3	2 - 10	190	150	3.100	1.800	2.200	1	1	6
IPCS4020	Yes	4/0 - 2	2/0 - 6	300	235	3.300	2.200	2.600	1	1	4
IPCS3535**	No	350 - 1/0	350 - 1/0	570	445	4.500	3.000	3.900	2	1	2
IPCS5040**	No	500 - 2/0	4/0 - 4	405	315	4.500	3.000	3.900	2	1	2
IPCS5035**	No	500 - 4/0	350 - 1/0	570	445	4.500	3.000	3.900	2	1	2
IPCS7550**	No	750 - 250	500 - 250	700	545	4.700	3.300	4.300	2	1	2

UL Listed for Line Side of Service Equipment

Polaris EASY-TAP™ INSULATION PIERCING CONNECTOR products are UL-listed to ensure they meet the stringent testing requirements for use on the line side of service, in full compliance with NEC 230.46 codes.

* Cannot be used with bare wire or as a splice.
 ** Cannot be used with bare wire.
 Not recommended for use with extra-flexible cables.
 Not approved for submersible applications.



MAKING — the — CONNECTION



Scan for more
information



MECHANICAL CONNECTORS

