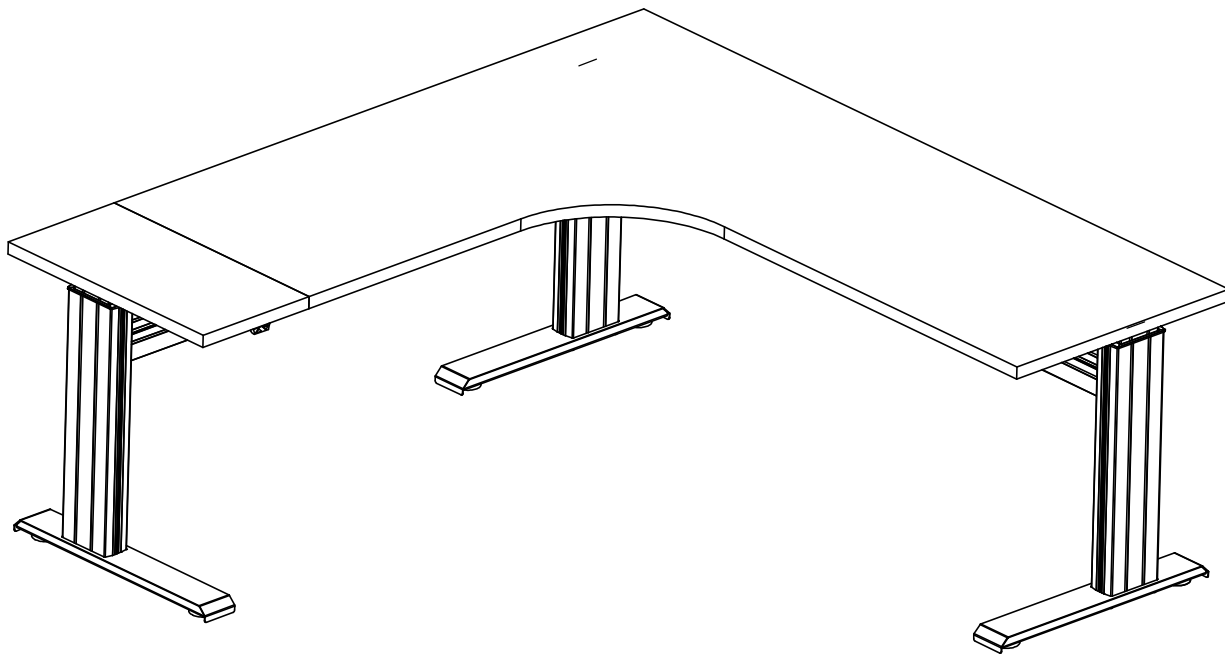




ergonomic products

K&A Manufacturing
6703 Zinser Street
Schofield, WI 54476
Phone: 800.298.4351
Fax: 866.882.9475
www.raproducts.com
11/13/14

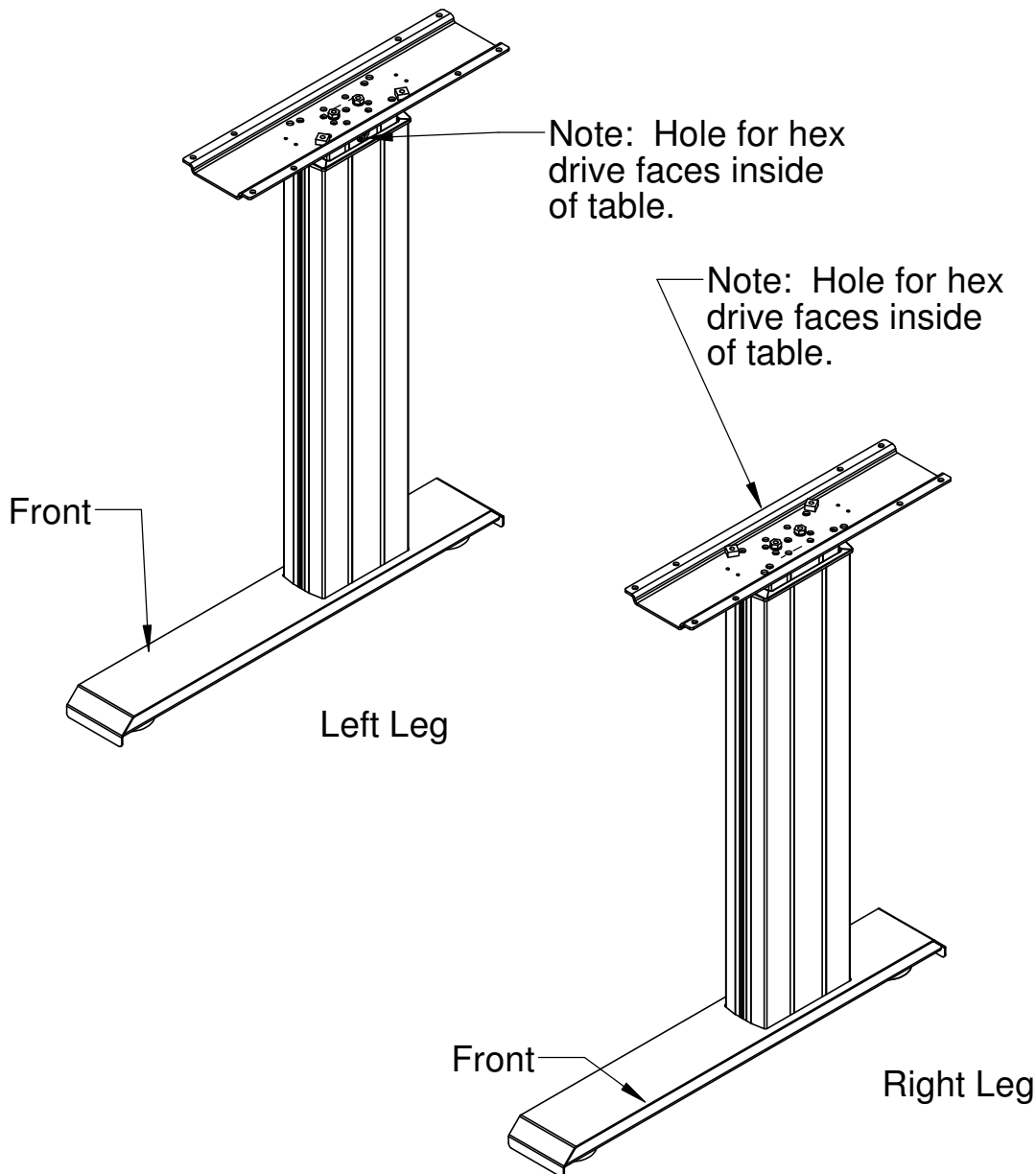
NewHeights™ Series 4 LT Efficiente 3-Leg Instructions to Replace Leg Spindles



Read all the instructions before beginning.

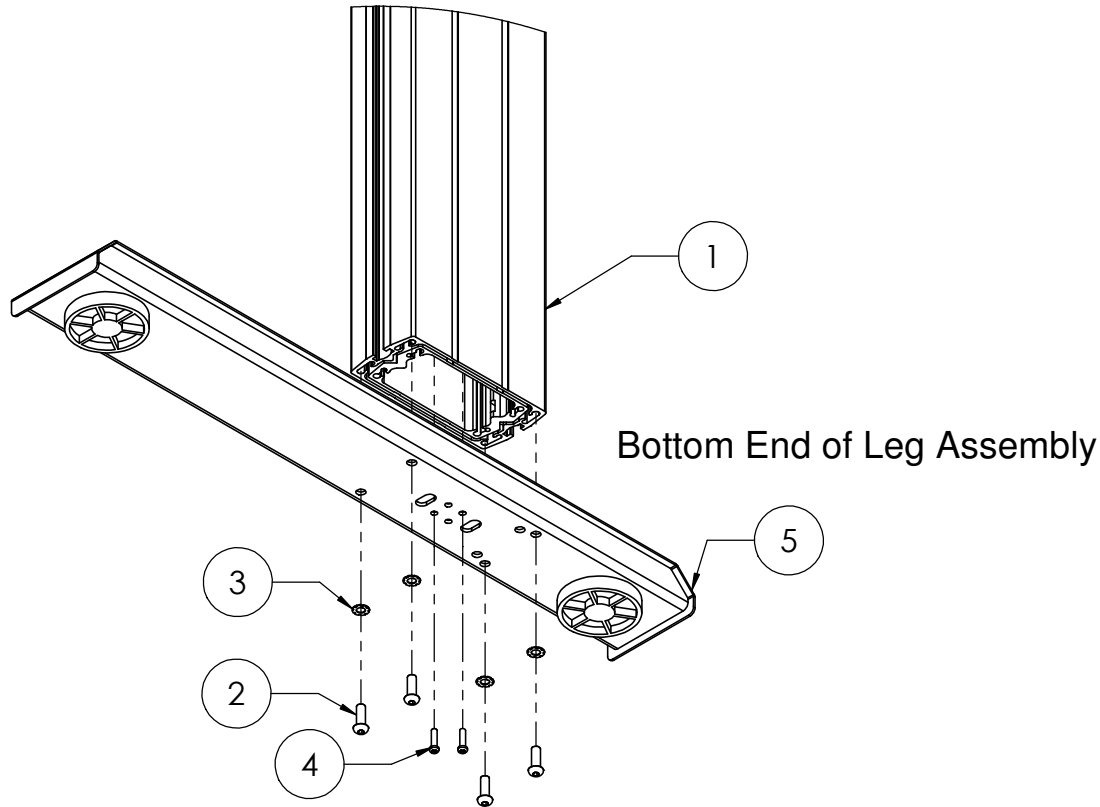
Your workstation will have (2) left legs and (1) right leg. Below shows how to identify which legs are left or right. After replacing the spindles, make sure to reassemble the workstation as it was originally.

Reference the assembly instructions that came with the workstation and disassemble the cross supports in reverse order. Remove the legs.



Step 1: Unplug the power cord for the control box. Lay the leg assembly **1** on its side on a protected surface. Remove (4) socket screws **2** and (4) washers **3** holding the foot **5** onto the bottom of the column. Remove (2) plastite screws **4** holding the foot onto the spindle **6**. Remove the foot and set it aside for reattachment later.

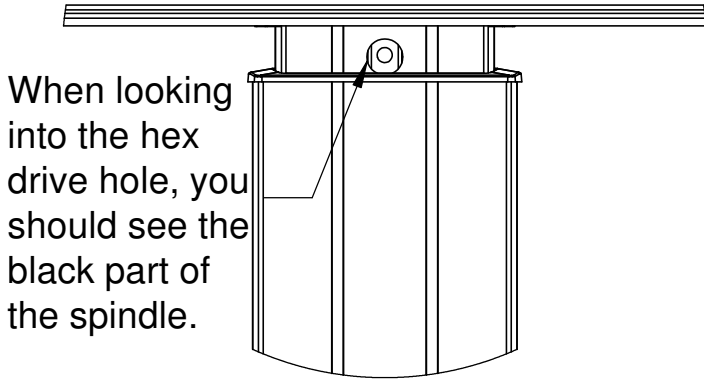
Do not remove the spindle at this time. Do not pull apart the outer and inner column extrusions or allow them to fall apart.



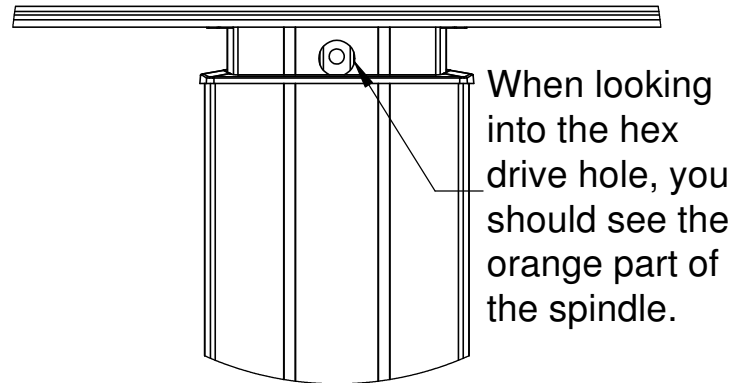
ITEM #	PART #	DESCRIPTION	QTY.
1	Varies	LT Column Assembly	1
2	50906	1/4-20 X 3/4 Button Head Socket Screw	8
3	52490	M6 External Tooth Lock Washer	8
4	Varies	16mm or 25mm (Caster Foot) Plastite Screw	2
5	Varies	NewHeights Foot Assembly	1
6	Varies	LT WSS & Spindle Assembly	1
7	53014	1/4-20 Hex Nut	2
8	53012	1/4-20 x 7/16 Socket Head Cap Screw	2
9	53013	1/4" Split Lock Washer	2
10	53060	8-32x 1-1/4 Socket Cap Screw	2
11	50267	8-32 Serrated Flange Lock Nut	2

Your workstation may have caster feet. The procedure is the same.

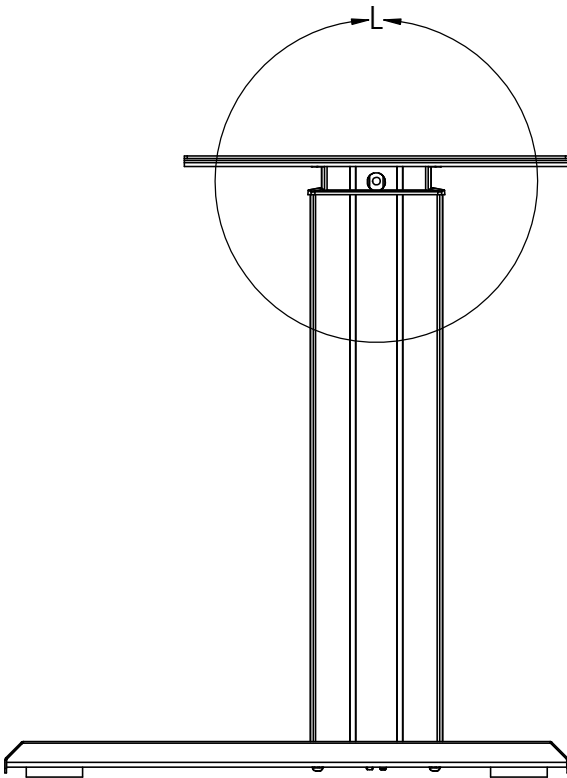
Left Leg Assembly



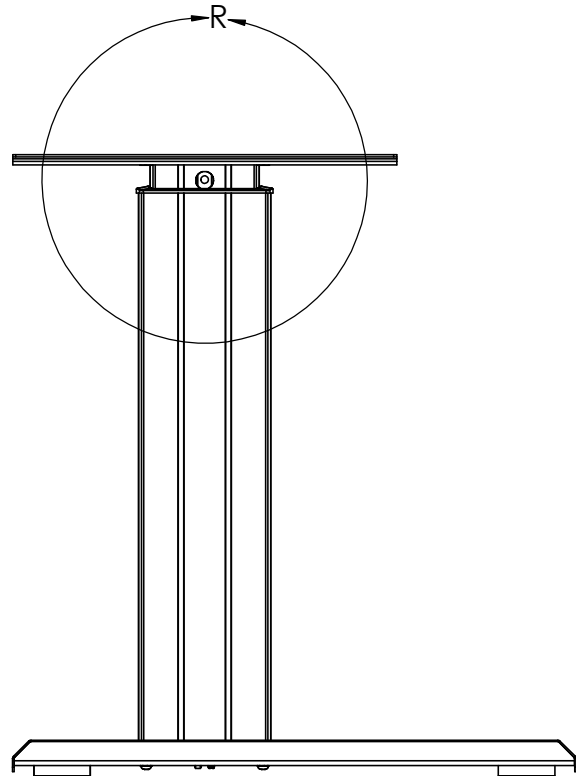
Right Leg Assembly



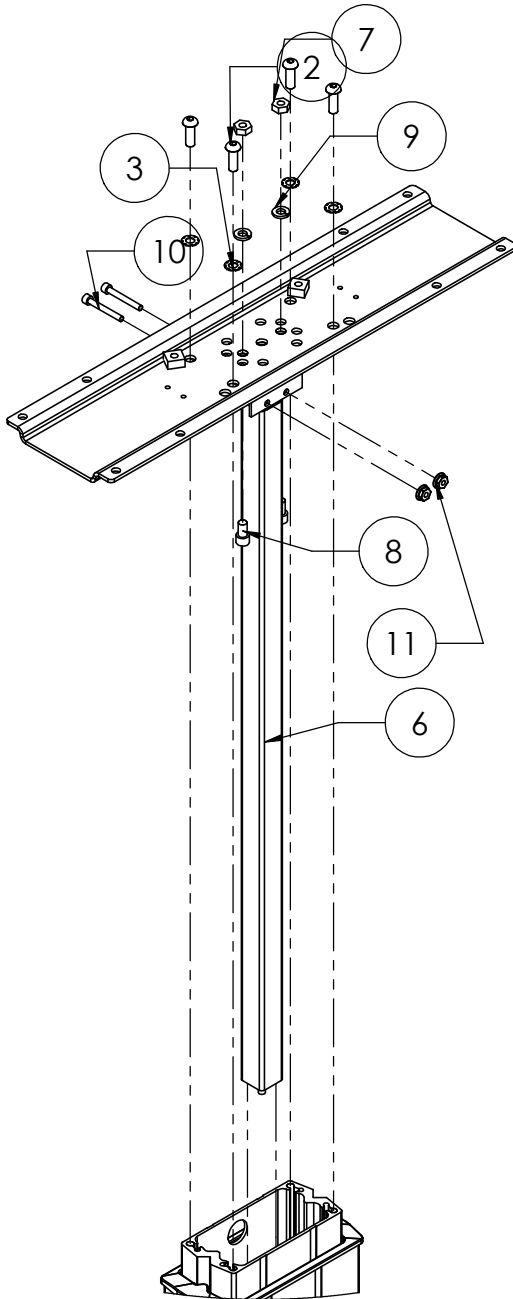
Critical assembly information ! Before disassembly and after reassembly check that the correct colored part of the spindle is showing through the hex drive hole.



Left Leg Assembly



Right Leg Assembly



Step 2: Remove (4) socket screws **2** and (4) lock washers **3** holding the worksurface support and spindle assembly **6** onto the top of the inner extrusion. Remove the worksurface support and spindle from the column.

Step 3: Remove the (2) socket screws **8**, the lock washers **9** and the hex nuts **7** holding the worksurface support to the spindle. Remove the ((2) socket screws **10** and the (2) lock nuts **11** holding the spindle head to the bracket on the worksurface support. Remove the spindle from the worksurface support and set it aside.

Step 4: Attach the new spindle to the worksurface support in reverse order of disassembly.

Important Note: Left and right spindles need to be attached differently. The left leg assembly must have the spindle attached to the bracket with the orange side of the spindle head facing the bracket. The black side of the spindle head must face the hex drive hole at the top of the inner column.

The right leg assembly must have the spindle attached to the bracket with the black side of the spindle head facing the bracket. The orange side of the spindle head must face the hex drive hole at the top of the inner column.

Step 5: Reassemble the column in the reverse order of disassembly.

Step 6: Follow this procedure with the other (2) leg assemblies. Reassemble the workstation in the reverse order of disassembly.

Reset Procedure and Troubleshooting: Plug the control box in and check all the cord connections to the leg assemblies, the control box, and the hand switch. Press both arrows on the hand switch. The leg assemblies will lower to their lowest point. The control box will reset and beep once. The workstation is now ready for use. Repeat this procedure any time the workstation stops working or gets stuck in any position.

If the leg assemblies are at uneven heights it is usually caused by an improperly installed hex rod. Disassemble one of the legs that point in the same direction and make sure both ends of the hex rod are properly engaged in the hex drives near the tops of the leg assemblies.