

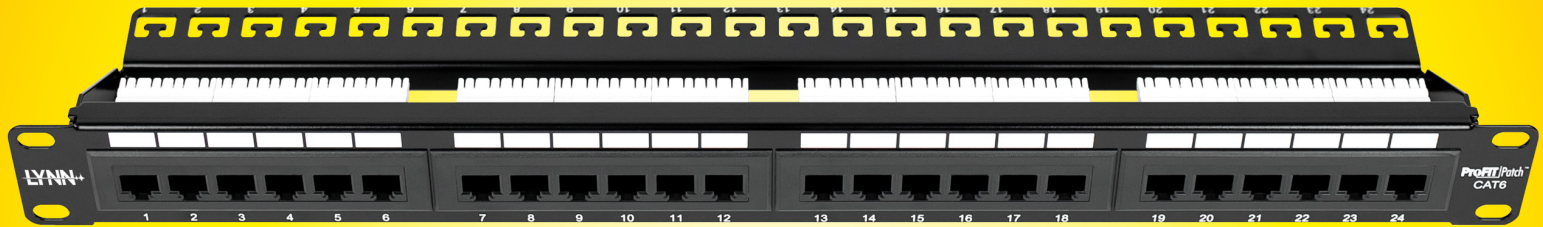
# 24 PORT 19" RACKMOUNT

## 110 Punch Down Panel



# ProFIT Patch<sup>TM</sup> PREMISE

Premium Copper Panels



P/N: PRO-CPP-24-CAT5E-19  
PRO-CPP-24-CAT6-19

### Cable Management

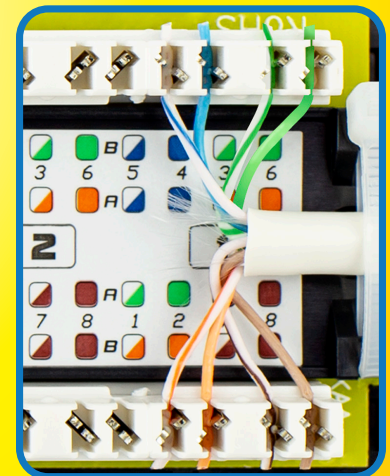
Built-in rear cable management designed for hyperscale extreme density

### Port Labeling

Silk-screened labeling on front and back cable management for quick port identification

### Color Coded Labels

Designed for T568A and T568B wiring configurations. Compatible with both 110 & Krone punch down tools.



2022.04.03

## Specifications

### MATERIAL

- Panel: 1.5mm SPCC steel with black paint
- Jack bracket set: 1.5mm SPCC steel with black paint
- RJ45 Jack
  - Housing: ABS, UL 94V-0
  - Contact: phosphor bronze, nickel plated; 50µm gold plated contacts
  - Contact bracket: PC, UL 94V-2, transparent color
- IDC
  - Housing: PC glass fiber, UL 94V-2
  - Terminal: phosphor bronze, tin plated
  - PCB: FR4, UL 94V-0

### PERFORMANCE

- T568A & T568B wiring
- Insertion force: 20N max (IEC 60603-7-4)
- Retention strength: 7.7kg between jack and plug
- Operating temperature: -10°C to 60°C
- Life (mating cycles)
  - Jack: 750 cycles/min (ISO/IEC 11801, IEC 60603-7-4)
- ICD: suitable for 22 – 26AWG stranded and solid wire, compatible with both 110 & Krone punch down tools

### OPTIONAL CABLE MANAGER



P/N: PRO-CBL-MGR-1U-5PR

- Fits any standard 19 inch rack and cabinet
- Heavy gauge 1.5mm metal with flexible, plastic D-rings
- Radius-edged D-rings to protect cable

CAT5e and CAT6: transmission performance is in compliance with ANSI/TIA/EIA 568 B.2-1 standard

thinklynn.com

TRUSTED  
SINCE 64

Datacom: (800) 523-6075  
Broadband: (888) 235-2097