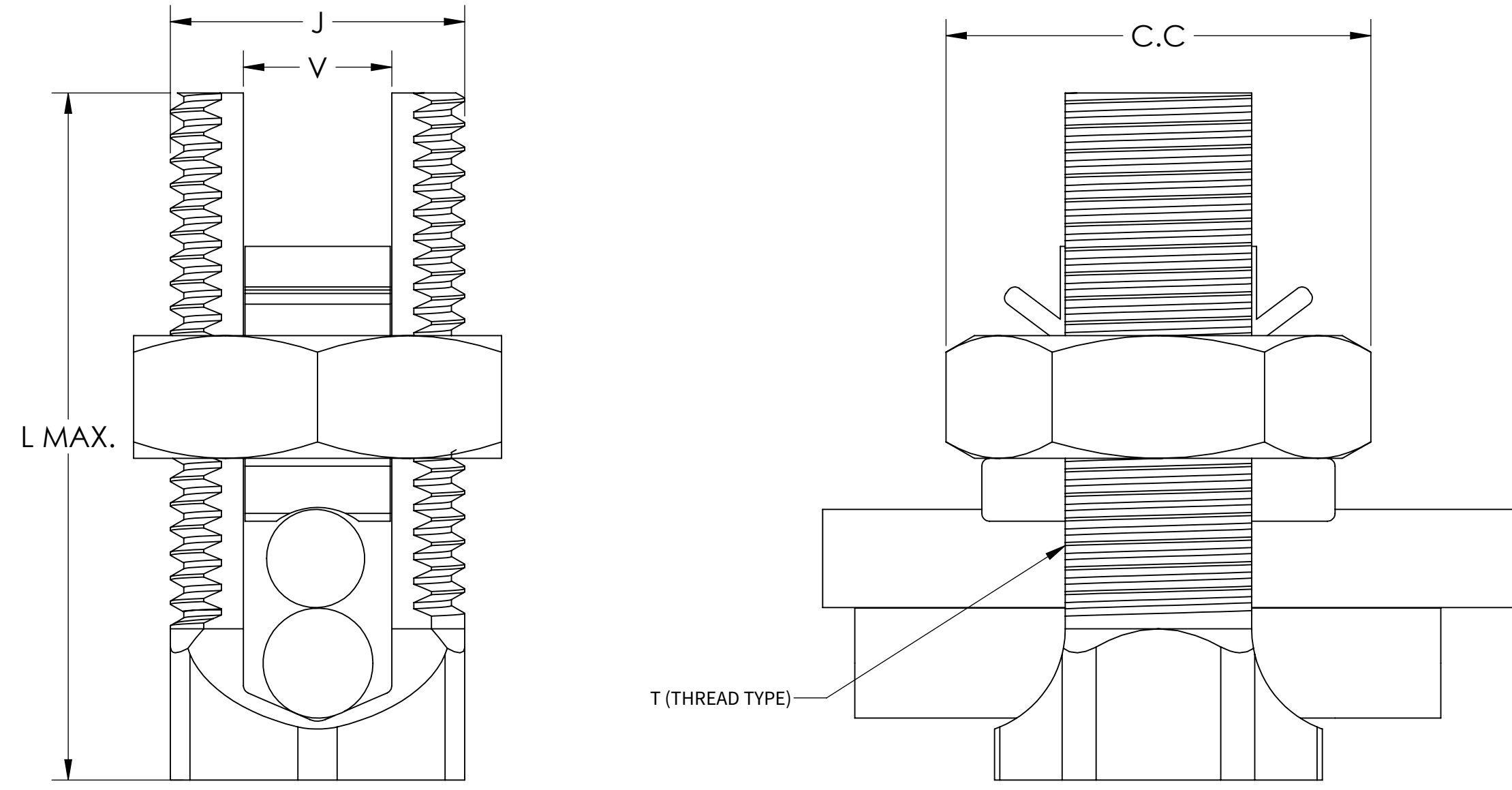


- FEATURES:**
1. MATERIAL: ETP COPPER
 2. FINISH: NATURAL
 3. ALL SIZES ARE UL 486B LISTED. FILE NO. E9498.
 4. ALL SIZES ARE CSA C22.2 NO. 65 LISTED. FILE NO. 42862 & 42682-C40

N Series: Copper Split Bolts



CAT NO.	J	L MAX.	V	X (A/F)	C.C (A/F)	T (THREAD TYPE)	RANGE OF EQUAL MAIN & TAP		MIN TAP WITH ONE MAX MAIN	WIRE DIAMETER RANGE (IN)	RECOMMENDED TORQUE (LB-IN)
							MIN	MAX			
N-10	.37	.79	.150	.49	0.55	3/8-24 UNF	16 STR	10 STR	16 STR	0.057 – 0.116	80
N-8	.37	.85	.15	.38	0.5	3/8-24 UNF	16 STR	8 STR	16 STR	.057 - .145	80
N-6	.42	1.05	.17	.49	.62	7/16-20 UNF	10 SOL	6 SOL	16 STR	.102 - .162	165
N-4	.48	1.05	.22	.56	.69	1/2-20 UNF	8 SOL	4 SOL	16 STR	.128 - .204	165
N-3	.58	1.50	.26	.60	.75	9/16-18 UNF	6 SOL	2 SOL	14 STR	.162 - .258	275
N-2	.6	1.32	.33	.68	.81	5/8-18-UNF	6 SOL	2 SOL	14 STR	.162 - .292	275
N-1/0	.73	1.78	.38	.74	.94	3/4-16 UNF	4 SOL	1/0 STR	14 STR	.204 - .375	385
N-2/0	.65	1.94	.44	.85	1.04	7/8-14 UNF	2 SOL	2/0 STR	12 SOL	.258 - .418	385
N-3/0	.85	1.94	.48	.85	1.05	7/8-14 UNF	2 SOL	2/0 STR	10 SOL	.258 - .470	500
N-250	.97	2.25	.60	25.4	1.34	1-14	1/0 SOL	250 MCM	8 SOL	.325 - .575	650
N-350	1.37	2.60	.71	1.41	1.70	1 3/8-12 UNF	4/0 SOL	350 MCM	8 SOL	.528 - .682	650
N-500	1.40	2.38	.85	1.48	1.82	1 7/16-12	250 MCM	500 MCM	8 SOL	.575 - .815	825
N-750	1.87	3.51	1.02	1.94	2.31	1 7/8-12	350 MCM	750 MCM	8 SOL	.682 - .999	1000
N-1000	2.0	3.40	1.17	2.19	2.56	2-12	500 MCM	1000 MCM	16 STR	.815 - 1.153	1100