

# POLARIS®

## COMPRESSION CONNECTORS

### POLARIS MAKES THE CONNECTION

Our compression connectors are the pro's choice for reliability and ease of use. They're compatible with many standard crimp tools and come with clearly legible size markings to save installers time. Plus, we offer a complete range for any application, from power distribution to data centers.



### THE POLARIS DIFFERENCE

#### Improved performance

Experience better conductivity, excellent reliability, and reduced downtime with Polaris connectors.

#### Oxide Inhibitor

Aluminum connectors are pre-filled with oxide inhibitor to protect against oxidation.

#### Enhanced durability

Our corrosion-resistant connectors withstand the elements, ensuring long-lasting performance.

#### Clear color coding

Each connector is color coded with clear indication of conductor size and crimp location.

#### Simplified installation

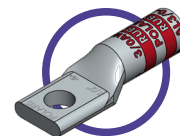
Save time and labor with our easy-to-use compression design.

#### UL listed with most major brand tools

Use your favorite crimp tool and die. Polaris connectors are listed for use with tools from most major brands

### MULTIPLE OPTIONS

#### ALUMINUM LUGS



AL, AL-N, AL-NT

#### COPPER LUGS



L, LN, SL-N, L-B, L-NB, GL, GL-N, GL-B, GL-NB

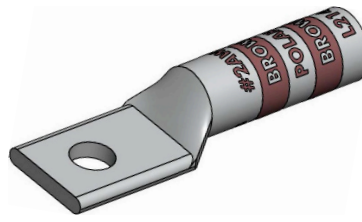


**SCAN**  
For installation instructions

# COMPRESSION LUGS

## L SERIES

Long Barrel Copper 1-Hole



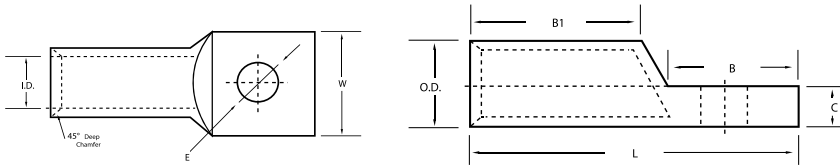
**POLARIS**<sup>®</sup>

### FEATURES

- Produced from high conductivity copper tubing.
- Tin-plated to provide corrosion and low contact resistance.
- Marked with die index and color coded.
- Listed for 35KV maximum when properly installed.
- For applications greater than 2000V, install to cable Manufacturer voltage stress relief instructions.
- Flex rated - consult customer service for details.

### SPECIFICATIONS

- UL486A/B Listed Wire Connector.
- UL467 Grounding & Bonding (Sizes 8 AWG - 3/0 AWG).
- cULus Listed E155027.
- For max ampacity, Please Consult current NEC manual.
- Temperature Rating: 90 °C. 9CU.



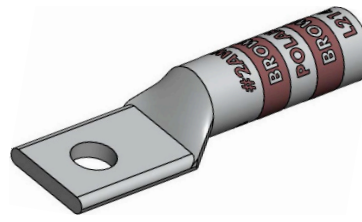
SKU	Material	Conductor Type	Color Code	Length (IN)	Width (IN)	Mounting Bolt Size (E) (IN)	Barrel ID (IN)	Barrel OD (IN)	Barrel Length (B1) (IN)	Wire Range	Expanded Wire Range (Class B/C Only)
L810	Cu	Cu	Red	1.52	0.42	#10 (3/16)	0.17	0.27	0.81	8 AWG	8 AWG
L810P	Cu	Cu	Red	1.52	0.42	#10 (3/16)	0.17	0.27	0.81	8 AWG	8 AWG
L814	Cu	Cu	Red	1.52	0.42	1/4	0.17	0.27	0.81	8 AWG	8 AWG
L814P	Cu	Cu	Red	1.52	0.42	1/4	0.17	0.27	0.81	8 AWG	8 AWG
L838	Cu	Cu	Red	1.52	0.57	3/8	0.17	0.27	0.81	8 AWG	8 AWG
L838P	Cu	Cu	Red	1.52	0.57	3/8	0.17	0.27	0.81	8 AWG	8 AWG
L610	Cu	Cu	Blue	1.77	0.42	#10 (3/16)	0.21	0.30	0.98	6 AWG	6 AWG - 8 AWG
L614	Cu	Cu	Blue	1.77	0.42	1/4	0.21	0.30	0.98	6 AWG	6 AWG - 8 AWG
L614P	Cu	Cu	Blue	1.77	0.42	1/4	0.21	0.30	0.98	6 AWG	6 AWG - 8 AWG
L638	Cu	Cu	Blue	1.91	0.59	3/8	0.21	0.30	0.98	6 AWG	6 AWG - 8 AWG
L638P	Cu	Cu	Blue	1.91	0.59	3/8	0.21	0.30	0.98	6 AWG	6 AWG - 8 AWG
L656	Cu	Cu	Blue	1.91	0.59	5/16	0.21	0.30	0.98	6 AWG	6 AWG - 8 AWG
L656P	Cu	Cu	Blue	1.91	0.59	5/16	0.21	0.30	0.98	6 AWG	6 AWG - 8 AWG
L410	Cu	Cu	Gray	1.77	0.49	#10 (3/16)	0.25	0.34	0.98	4 AWG	4 AWG - 6 AWG
L414	Cu	Cu	Gray	1.77	0.49	1/4	0.25	0.34	0.98	4 AWG	4 AWG - 6 AWG
L414P	Cu	Cu	Gray	1.77	0.49	1/4	0.25	0.34	0.98	4 AWG	4 AWG - 6 AWG
L438	Cu	Cu	Gray	1.91	0.59	3/8	0.25	0.34	0.98	4 AWG	4 AWG - 6 AWG
L438P	Cu	Cu	Gray	1.91	0.59	3/8	0.25	0.34	0.98	4 AWG	4 AWG - 6 AWG
L456	Cu	Cu	Gray	1.77	0.49	5/16	0.25	0.34	0.98	4 AWG	4 AWG - 6 AWG
L456P	Cu	Cu	Gray	1.77	0.49	5/16	0.25	0.34	1.10	4 AWG	4 AWG - 6 AWG
L314	Cu	Cu	White	2.07	0.53	1/4	0.28	0.38	1.10	3 AWG	3 AWG - 6 AWG
L338	Cu	Cu	White	2.07	0.59	3/8	0.28	0.38	1.10	3 AWG	3 AWG - 6 AWG
L214	Cu	Cu	Brown	2.07	0.6	1/4	0.32	0.42	1.10	2 AWG	2 AWG - 6 AWG
L214P	Cu	Cu	Brown	2.07	0.6	1/4	0.32	0.42	1.10	2 AWG	2 AWG - 6 AWG
L238	Cu	Cu	Brown	2.07	0.6	3/8	0.32	0.42	1.10	2 AWG	2 AWG - 6 AWG
L238P	Cu	Cu	Brown	2.07	0.6	3/8	0.32	0.42	1.10	2 AWG	2 AWG - 6 AWG
L256	Cu	Cu	Brown	2.07	0.6	5/16	0.32	0.42	1.10	2 AWG	2 AWG - 6 AWG
L256P	Cu	Cu	Brown	2.07	0.6	5/16	0.32	0.42	1.10	2 AWG	2 AWG - 6 AWG
L138	Cu	Cu	Green	2.21	0.67	3/8	0.36	0.47	1.10	1 AWG	1 AWG - 6 AWG
L156	Cu	Cu	Green	2.11	0.67	5/16	0.36	0.47	1.10	1 AWG	1 AWG - 6 AWG
L1014P	Cu	Cu	Pink	2.21	0.74	1/4	0.39	0.52	1.20	1/0 AWG	1/0 AWG - 6 AWG



# COMPRESSION LUGS

## L SERIES (CONT'D)

Long Barrel Copper 1-Hole



**POLARIS**<sup>®</sup>



SKU	Material	Conductor Type	Color Code	Length (IN)	Width (IN)	Mounting Bolt Size (E) (IN)	Barrel ID (IN)	Barrel OD (IN)	Barrel Length (B1) (IN)	Wire Range	Expanded Wire Range (Class B/C Only)
L1014	Cu	Cu	Pink	2.21	0.74	1/4	0.39	0.52	1.20	1/0 AWG	1/0 AWG - 6 AWG
L1038	Cu	Cu	Pink	2.21	0.74	3/8	0.39	0.52	1.20	1/0 AWG	1/0 AWG - 6 AWG
L1038P	Cu	Cu	Pink	2.21	0.74	3/8	0.39	0.52	1.20	1/0 AWG	1/0 AWG - 6 AWG
L1048	Cu	Cu	Pink	2.5	0.74	1/2	0.39	0.52	1.20	1/0 AWG	1/0 AWG - 6 AWG
L1056	Cu	Cu	Pink	2.21	0.74	5/16	0.39	0.52	1.20	1/0 AWG	1/0 AWG - 6 AWG
L1056P	Cu	Cu	Pink	2.21	0.74	5/16	0.39	0.52	1.20	1/0 AWG	1/0 AWG - 6 AWG
L2014	Cu	Cu	Black	2.68	0.82	1/4	0.44	0.56	1.38	2/0 AWG	2/0 AWG - 4 AWG
L2014P	Cu	Cu	Black	2.68	0.82	1/4	0.44	0.56	1.38	2/0 AWG	2/0 AWG - 4 AWG
L2038	Cu	Cu	Black	2.68	0.82	3/8	0.44	0.56	1.38	2/0 AWG	2/0 AWG - 4 AWG
L2038P	Cu	Cu	Black	2.68	0.82	3/8	0.44	0.56	1.38	2/0 AWG	2/0 AWG - 4 AWG
L2048	Cu	Cu	Black	2.68	0.82	1/2	0.44	0.56	1.38	2/0 AWG	2/0 AWG - 4 AWG
L2048P	Cu	Cu	Black	2.68	0.82	1/2	0.44	0.56	1.38	2/0 AWG	2/0 AWG - 4 AWG
L3014	Cu	Cu	Orange	2.8	0.9	1/4	0.49	0.62	1.38	3/0 AWG	3/0 AWG - 2 AWG
L3014P	Cu	Cu	Orange	2.8	0.9	1/4	0.49	0.62	1.38	3/0 AWG	3/0 AWG - 2 AWG
L3038	Cu	Cu	Orange	2.8	0.9	3/8	0.49	0.62	1.38	3/0 AWG	3/0 AWG - 2 AWG
L3038P	Cu	Cu	Orange	2.8	0.9	3/8	0.49	0.62	1.38	3/0 AWG	3/0 AWG - 2 AWG
L3048	Cu	Cu	Orange	2.8	0.9	1/2	0.49	0.62	1.38	3/0 AWG	3/0 AWG - 2 AWG
L3048P	Cu	Cu	Orange	2.8	0.9	1/2	0.49	0.62	1.38	3/0 AWG	3/0 AWG - 2 AWG
L4048	Cu	Cu	Purple	2.8	1	1/2	0.55	0.69	1.42	4/0 AWG	4/0 AWG - 1 AWG
L25048	Cu	Cu	Yellow	3.03	1.09	1/2	0.59	0.75	1.61	250 MCM	250 MCM - 1/0 AWG
L30048	Cu	Cu	White	3.39	1.19	1/2	0.66	0.82	1.97	300 MCM	300 MCM - 2/0 AWG
L35048	Cu	Cu	Red	3.47	1.28	1/2	0.7	0.87	1.97	350 MCM	350 MCM - 3/0 AWG
L4014	Cu	Cu	Purple	2.8	1	1/4	0.55	0.69	1.42	4/0 AWG	4/0 AWG - 1 AWG
L4014P	Cu	Cu	Purple	2.8	1	1/4	0.55	0.69	1.42	4/0 AWG	4/0 AWG - 1 AWG
L4038	Cu	Cu	Purple	2.8	1	3/8	0.55	0.69	1.42	4/0 AWG	4/0 AWG - 1 AWG
L4038P	Cu	Cu	Purple	2.8	1	3/8	0.55	0.69	1.42	4/0 AWG	4/0 AWG - 1 AWG
L40048	Cu	Cu	Blue	3.86	1.39	1/2	0.76	0.95	1.97	400 MCM	400 MCM - 4/0 AWG
L4048P	Cu	Cu	Purple	2.8	1	1/2	0.55	0.69	1.42	4/0 AWG	4/0 AWG - 1 AWG
L50048	Cu	Cu	Brown	4.13	1.54	1/2	0.84	1.06	2.24	500 MCM	500 MCM - 250 MCM
L50058	Cu	Cu	Brown	4.13	1.54	5/8	0.84	1.06	2.24	500 MCM	500 MCM - 250 MCM
L60058	Cu	Cu	Green	4.25	1.72	5/8	0.93	1.19	2.24	600 MCM	600 MCM - 250 MCM
L75048	Cu	Cu	Black	5.16	1.9	1/2	1.04	1.31	2.64	750 MCM	750 MCM - 500 MCM
L75058	Cu	Cu	Black	5.16	1.9	5/8	1.04	1.31	2.64	750 MCM	750 MCM - 500 MCM
L10058	Cu	Cu	White	5.61	2.15	5/8	1.19	1.53	3.15	1000 MCM	1000 MCM - 750 MCM



# COMPRESSION LUGS

**L-B SERIES** For Flexible Copper Cable  
Long Barrel Copper 1-Hole with Bell End



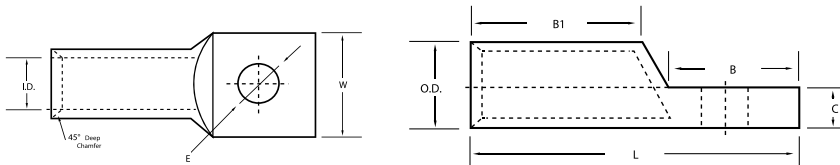
**POLARIS**<sup>®</sup>

## FEATURES

- Connector end has a gentle, continuous flare to ensure ease of cable insertion of flexible and extra-flexible cables such as locomotive, welding, mining cable and more.
- Produced from high conductivity copper tubing.
- Tin-plated to provide corrosion and low contact resistance.
- Marked with die index and color coded.
- Listed for 35KV maximum when properly installed.
- For applications greater than 2000V, install to cable Manufacturer voltage stress relief instructions.
- Flex rated - consult customer service for details.

## SPECIFICATIONS

- UL486A/B Listed Wire Connector.
- UL467 Grounding & Bonding (Sizes 8 AWG - 3/0 AWG).
- cULus Listed E155027.
- For max ampacity, Please Consult current NEC manual.
- Temperature Rating: 90 °C. 9CU.



**FLEX**RATED

SKU	Material	Conductor Type	Color Code	Length (IN)	Width (IN)	Mounting Bolt Size (E) (IN)	Barrel ID (IN)	Barrel OD (IN)	Barrel Length (B1) (IN)	Wire Range	Expanded Wire Range (Class B/C Only)
L638B	Cu	Cu	Blue	1.91	0.59	3/8	0.21	0.30	0.98	6 AWG	6 AWG-8 AWG
L438B	Cu	Cu	Gray	1.91	0.59	3/8	0.25	0.34	0.98	4 AWG	4 AWG-6 AWG
L238B	Cu	Cu	Brown	2.07	0.60	3/8	0.32	0.42	1.10	2 AWG	2 AWG-6 AWG
L256B	Cu	Cu	Brown	2.07	0.60	5/16	0.32	0.42	1.10	2 AWG	2 AWG-6 AWG
L156B	Cu	Cu	Green	2.11	0.67	5/16	0.36	0.47	1.10	1 AWG	1 AWG-6 AWG
L1056B	Cu	Cu	Pink	2.25	0.74	5/16	0.39	0.52	1.20	1/0 AWG	1/0 AWG-6 AWG
L2038B	Cu	Cu	Black	2.68	0.82	3/8	0.44	0.56	1.38	2/0 AWG	2/0 Awg-4 AWG
L3038B	Cu	Cu	Orange	2.76	0.90	3/8	0.49	0.62	1.38	3/0 AWG	3/0 AWG-2 AWG
L3048B	Cu	Cu	Orange	2.76	0.90	1/2	0.49	0.62	1.38	3/0 AWG	3/0 AWG-2 AWG
L25038B	Cu	Cu	Yellow	3.03	1.09	3/8	0.59	0.75	1.61	250 MCM	250 MCM-1/0 AWG
L25048B	Cu	Cu	Yellow	3.03	1.09	1/2	0.59	0.75	1.61	250 MCM	250 MCM-1/0 AWG
L30048B	Cu	Cu	White	3.39	1.19	1/2	0.66	0.82	1.97	300 MCM	300 MCM-2/0 AWG
L35058B	Cu	Cu	Red	3.47	1.28	5/8	0.70	0.87	1.97	350 MCM	350 MCM-3/0 AWG
L4048B	Cu	Cu	Purple	2.80	1.00	1/2	0.55	0.69	1.42	4/0 AWG	4/0 AWG-1 AWG
L50058B	Cu	Cu	Brown	4.13	1.54	5/8	0.84	1.06	2.24	500 MCM	500 MCM-250 MCM
L60058B	Cu	Cu	Green	4.25	1.72	5/8	0.93	1.19	2.24	600 MCM	600 MCM-250 MCM
L70048B	Cu	Cu	Pink	5.16	1.77	1/2	0.98	1.24	2.64	700 MCM	700 MCM-350 MCM
L70058B	Cu	Cu	Pink	5.16	1.77	5/8	0.98	1.24	2.64	700 MCM	700 MCM-350 MCM



# COMPRESSION LUGS

## GL SERIES

Short Barrel Copper 1-Hole with Peep Hole



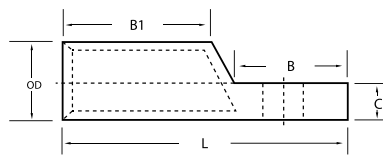
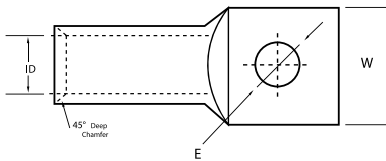
# POLARIS®

### FEATURES

- Peep hole allows easy inspection of the termination to assure complete cable insertion.
- Produced from high conductivity copper tubing.
- Tin-plated to provide corrosion and low contact resistance.
- Marked with die index and color coded.
- Listed for 35KV maximum when properly installed.
- For applications greater than 2000V, install to cable Manufacturer voltage stress relief instructions.
- Flex rated - consult customer service for details.

### SPECIFICATIONS

- UL486A/B Listed Wire Connector.
- UL467 Grounding & Bonding (Sizes 8 AWG - 3/0 AWG).
- cULus Listed E155027.
- For max ampacity, Please Consult current NEC manual.
- Temperature Rating: 90 °C. 9CU.



SKU	Material	Conductor Type	Color Code	Length (IN)	Width (IN)	Mounting Bolt Size (E) (IN)	Barrel ID (IN)	Barrel OD (IN)	Barrel Length (B1) (IN)	Wire Range	Expanded Wire Range (Class B/C Only)
GL810	Cu	Cu	Red	1.20	0.42	#10 (3/16)	0.17	0.27	0.49	8 AWG	8 AWG
GL814	Cu	Cu	Red	1.20	0.42	1/4	0.17	0.27	0.49	8 AWG	8 AWG
GL838	Cu	Cu	Red	1.20	0.42	3/8	0.17	0.27	0.49	8 AWG	8 AWG
GL856	Cu	Cu	Red	1.20	0.42	5/16	0.17	0.27	0.49	8 AWG	8 AWG
GL614	Cu	Cu	Blue	1.50	0.42	1/4	0.21	0.30	0.71	6 AWG	6 AWG - 8 AWG
GL638	Cu	Cu	Blue	1.50	0.49	3/8	0.21	0.30	0.71	6 AWG	6 AWG - 8 AWG
GL656	Cu	Cu	Blue	1.50	0.49	5/16	0.21	0.30	0.71	6 AWG	6 AWG - 8 AWG
GL414	Cu	Cu	Gray	1.50	0.49	1/4	0.25	0.34	0.71	4 AWG	4 AWG - 6 AWG
GL438	Cu	Cu	Gray	1.50	0.56	3/8	0.25	0.34	0.71	4 AWG	4 AWG - 6 AWG
GL456	Cu	Cu	Gray	1.50	0.49	5/16	0.25	0.34	0.71	4 AWG	4 AWG - 6 AWG
GL338	Cu	Cu	White	1.98	0.59	3/8	0.28	0.38	0.83	300 MCM	300 MCM - 2/0 AWG
GL214	Cu	Cu	Brown	1.80	0.60	1/4	0.32	0.42	0.83	2 AWG	2 AWG - 6 AWG
GL256	Cu	Cu	Brown	1.80	0.60	5/16	0.32	0.42	0.83	2 AWG	2 AWG - 6 AWG
GL238	Cu	Cu	Brown	1.80	0.60	3/8	0.32	0.42	0.83	2 AWG	2 AWG - 6 AWG
GL114	Cu	Cu	Green	1.84	0.67	1/4	0.36	0.47	0.83	1 AWG	1 AWG - 6 AWG
GL156	Cu	Cu	Green	1.84	0.67	5/16	0.36	0.47	0.83	1 AWG	1 AWG - 6 AWG
GL138	Cu	Cu	Green	1.84	0.67	3/8	0.36	0.47	0.83	1 AWG	1 AWG - 6 AWG
GL1056	Cu	Cu	Pink	1.84	0.74	5/16	0.39	0.52	0.83	1/0 AWG	1/0 AWG - 6 AWG
GL1038	Cu	Cu	Pink	1.84	0.74	3/8	0.39	0.52	0.83	1/0 AWG	1/0 AWG - 6 AWG
GL1048	Cu	Cu	Pink	1.84	0.74	1/2	0.39	0.52	0.83	1/0 AWG	1/0 AWG - 6 AWG
GL2056	Cu	Cu	Black	2.24	0.82	5/16	0.44	0.56	0.94	2/0 AWG	2/0 AWG - 4 AWG
GL2038	Cu	Cu	Black	2.24	0.82	3/8	0.44	0.56	0.94	2/0 AWG	2/0 AWG - 4 AWG
GL2048	Cu	Cu	Black	2.24	0.82	1/2	0.44	0.56	0.94	2/0 AWG	2/0 AWG - 4 AWG
GL3038	Cu	Cu	Orange	2.36	0.90	3/8	0.49	0.62	0.98	3/0 AWG	3/0 AWG - 2 AWG
GL3048	Cu	Cu	Orange	2.36	0.90	1/2	0.49	0.62	0.98	3/0 AWG	3/0 AWG - 2 AWG
GL4038	Cu	Cu	Purple	2.36	1.00	3/8	0.55	0.69	0.98	4/0 AWG	4/0 AWG - 1 AWG
GL4048	Cu	Cu	Purple	2.36	1.00	1/2	0.55	0.69	0.98	4/0 AWG	4/0 AWG - 1 AWG
GL25038	Cu	Cu	Yellow	2.48	1.09	3/8	0.59	0.75	1.06	250 MCM	250 MCM - 1/0 AWG
GL25048	Cu	Cu	Yellow	2.48	1.09	1/2	0.59	0.75	1.06	250 MCM	250 MCM - 1/0 AWG
GL30048	Cu	Cu	White	2.48	1.19	1/2	0.66	0.82	1.06	300 MCM	300 MCM - 2/0 AWG



# COMPRESSION LUGS

## GL SERIES (CONT'D)

Short Barrel Copper 1-Hole with Peep Hole



**POLARIS**<sup>®</sup>

**FLEX**<sup>®</sup>RATED

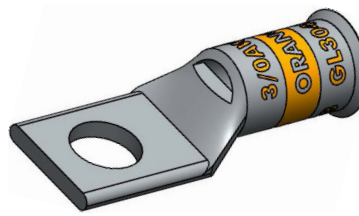
SKU	Material	Conductor Type	Color Code	Length (IN)	Width (IN)	Mounting Bolt Size (E) (IN)	Barrel ID (IN)	Barrel OD (IN)	Barrel Length (B1) (IN)	Wire Range	Expanded Wire Range (Class B/C Only)
<b>GL35038</b>	Cu	Cu	Red	1.63	1.28	3/8	0.70	0.87	1.10	350 MCM	350 MCM - 3/0 AWG
<b>GL35048</b>	Cu	Cu	Red	2.61	1.28	1/2	0.70	0.87	1.10	350 MCM	350 MCM - 3/0 AWG
<b>GL40048</b>	Cu	Cu	Blue	3.08	1.39	1/2	0.76	0.95	1.18	400 MCM	400 MCM - 4/0 AWG
<b>GL50048</b>	Cu	Cu	Brown	3.28	1.54	1/2	0.84	1.06	1.38	500 MCM	500 MCM - 250 MCM
<b>GL50058</b>	Cu	Cu	Brown	3.28	1.54	5/8	0.84	1.06	1.38	500 MCM	500 MCM - 250 MCM
<b>GL60048</b>	Cu	Cu	Green	3.50	1.72	1/2	0.93	1.19	1.50	600 MCM	600 MCM - 250 MCM
<b>GL60058</b>	Cu	Cu	Green	3.50	1.72	5/8	0.93	1.19	1.50	600 MCM	600 MCM - 250 MCM
<b>GL75048</b>	Cu	Cu	Black	3.87	1.76	1/2	1.04	1.31	1.85	750 MCM	750 MCM - 500 MCM
<b>GL75058</b>	Cu	Cu	Black	4.37	1.90	5/8	1.04	1.31	1.85	750 MCM	750 MCM - 500 MCM



# COMPRESSION LUGS

**GL-B SERIES** For Flexible Copper Cable

Short Barrel Copper 1-Hole  
with Peep Hole & Bell End



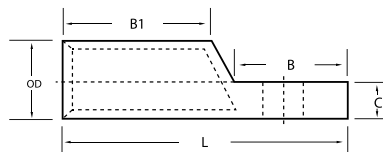
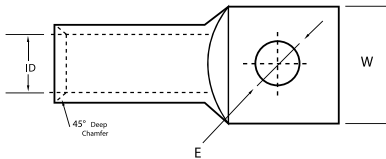
**POLARIS**<sup>®</sup>

## FEATURES

- Connector end has a gentle, continuous flare to ensure ease of cable insertion of flexible and extra-flexible cables such as locomotive, welding, mining cable and more.
- Produced from high conductivity copper tubing.
- Tin-plated to provide corrosion and low contact resistance.
- Marked with die index and color coded.
- Listed for 35KV maximum when properly installed.
- For applications greater than 2000V, install to cable Manufacturer voltage stress relief instructions.
- Flex rated - consult customer service for details.

## SPECIFICATIONS

- UL486A/B Listed Wire Connector.
- UL467 Grounding & Bonding (Sizes 8 AWG - 3/0 AWG).
- cULus Listed E155027.
- For max ampacity, Please Consult current NEC manual.
- Temperature Rating: 90 °C. 9CU.



SKU	Material	Conductor Type	Color Code	Length (IN)	Width (IN)	Mounting Bolt Size (E) (IN)	Barrel ID (IN)	Barrel OD (IN)	Barrel Length (B1) (IN)	Wire Range	Expanded Wire Range (Class B/C Only)
GL156B	Cu	Cu	Green	1.83	0.67	5/16	0.36	0.47	0.83	1 AWG	1 AWG-6 AWG
GL214B	Cu	Cu	Brown	1.80	0.60	1/4	0.32	0.42	0.83	2 AWG	2 AWG - 6 AWG
GL256B	Cu	Cu	Brown	1.80	0.60	5/16	0.32	0.42	0.83	2 AWG	2 AWG-6 AWG
GL1056B	Cu	Cu	Pink	1.83	0.74	5/16	0.39	0.52	0.83	1/0 AWG	1/0 AWG-6 AWG
GL2038B	Cu	Cu	Black	2.24	0.81	3/8	0.44	0.56	0.94	2/0 AWG	2/0 AWG-4 AWG
GL3038B	Cu	Cu	Orange	2.36	0.90	3/8	0.49	0.62	0.98	3/0 AWG	3/0 AWG -2 AWG
GL3048B	Cu	Cu	Orange	2.36	0.90	1/2	0.49	0.62	0.98	3/0 AWG	3/0 AWG -2 AWG
GL4048B	Cu	Cu	Purple	2.36	1.00	1/2	0.55	0.69	0.98	4/0 AWG	4/0 AWG-1 AWG
GL25038B	Cu	Cu	Yellow	2.48	1.09	3/8	0.59	0.75	1.06	250 MCM	250 MCM-1/0 AWG
GL25048B	Cu	Cu	Yellow	2.48	1.09	1/2	0.59	0.75	1.06	250 MCM	250 MCM-1/0 AWG
GL30048B	Cu	Cu	White	2.48	1.19	1/2	0.66	0.82	1.06	300 MCM	300 MCM-2/0 AWG
GL35058B	Cu	Cu	Red	2.48	1.28	5/8	0.70	0.88	1.10	350 MCM	350 MCM-3/0 AWG
GL50058B	Cu	Cu	Brown	3.28	1.54	5/8	0.84	1.06	1.38	500 MCM	500 MCM-250 MCM
GL60058B	Cu	Cu	Green	3.50	1.72	5/8	0.93	1.19	1.50	600 MCM	600 MCM-250 MCM
GL70058B	Cu	Cu	Pink	4.37	1.78	5/8	0.98	1.24	1.85	700 MCM	700 MCM-350 MCM
GL75058B	Cu	Cu	Black	4.37	1.90	5/8	1.04	1.31	1.85	750 MCM	750 MCM-500 MCM
GL10058B	Cu	Cu	White	4.43	1.90	5/8	1.19	1.53	1.91	1000 MCM	1000 MCM-750 MCM





# COMPRESSION LUGS

## GL-N SERIES

Short Barrel Copper 2-Hole with Peep Hole



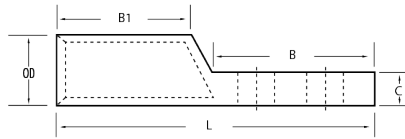
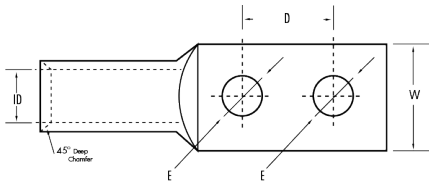
**POLARIS**<sup>®</sup>

### FEATURES

- Produced from high conductivity copper tubing.
- Tin-plated to provide corrosion and low contact resistance.
- Marked with die index and color coded.
- Listed for 35KV maximum when properly installed.
- For applications greater than 2000V, install to cable Manufacturer voltage stress relief instructions.
- Flex rated - consult customer service for details.

### SPECIFICATIONS

- UL486A/B Listed Wire Connector.
- UL467 Grounding & Bonding (Sizes 8 AWG - 3/0 AWG).
- cULus Listed E155027.
- For max ampacity, Please Consult current NEC manual.
- Temperature Rating: 90 °C. 9CU.



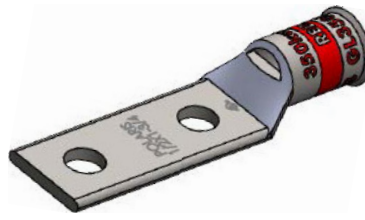
SKU	Material	Conductor Type	Color Code	Length (IN)	Width (IN)	Mounting Bolt Size (E) (IN)	Mounting Hole Spacing (D) (IN)	Barrel ID (IN)	Barrel OD (IN)	Barrel Length (B1) (IN)	Wire Range	Expanded Wire Range (Class B/C Only)
GL6N-141	Cu	Cu	Blue	2.09	0.42	1/4	0.625	0.21	0.30	0.71	6 AWG	6 AWG - 8 AWG
GL6N-143	Cu	Cu	Blue	2.64	0.42	1/4	1.000	0.21	0.30	0.71	6 AWG	6 AWG - 8 AWG
GL6N-38	Cu	Cu	Blue	2.64	0.57	3/8	1.000	0.21	0.30	0.71	6 AWG	6 AWG - 8 AWG
GL4N-141	Cu	Cu	Gray	2.09	0.49	1/4	0.625	0.25	0.34	0.71	4 AWG	4 AWG - 6 AWG
GL4N-38	Cu	Cu	Gray	2.68	0.57	3/8	1.000	0.25	0.34	0.75	4 AWG	4 AWG - 6 AWG
GL2N-141	Cu	Cu	Brown	2.28	0.60	1/4	0.625	0.32	0.42	0.83	2 AWG	2 AWG - 6 AWG
GL2N-142	Cu	Cu	Brown	2.36	0.60	1/4	0.750	0.32	0.42	0.83	2 AWG	2 AWG - 6 AWG
GL2N-143	Cu	Cu	Brown	2.80	0.60	1/4	1.000	0.32	0.42	0.83	2 AWG	2 AWG - 6 AWG
GL2N-38	Cu	Cu	Brown	2.84	0.60	3/8	1.000	0.32	0.42	0.83	2 AWG	2 AWG - 6 AWG
GL1N-38	Cu	Cu	Green	3.02	0.74	3/8	1.000	0.39	0.52	0.83	1 AWG	1 AWG - 6 AWG
GL10N-38	Cu	Cu	Pink	2.84	0.74	3/8	1.000	0.39	0.52	0.83	1/0 AWG	1/0 AWG - 6 AWG
GL20N	Cu	Cu	Black	4.17	0.81	1/2	1.750	0.44	0.56	0.94	2/0 AWG	2/0 AWG - 4 AWG
GL20N-38	Cu	Cu	Black	2.99	0.81	3/8	1.000	0.44	0.56	0.94	2/0 AWG	2/0 AWG - 4 AWG
GL30N	Cu	Cu	Orange	4.29	0.90	1/2	1.750	0.49	0.62	0.98	3/0 AWG	3/0 AWG - 2 AWG
GL30N-38	Cu	Cu	Orange	3.11	0.90	3/8	1.000	0.49	0.62	0.98	3/0 AWG	3/0 AWG - 2 AWG
GL40N	Cu	Cu	Purple	4.29	1.00	1/2	1.750	0.55	0.69	0.98	4/0 AWG	4/0 AWG - 1 AWG
GL40N-38	Cu	Cu	Purple	3.11	1.00	3/8	1.000	0.55	0.69	0.98	4/0 AWG	4/0 AWG - 1 AWG
GL250N	Cu	Cu	Yellow	4.41	1.09	1/2	1.750	0.59	0.75	1.06	250 MCM	250 MCM - 1/0 AWG
GL250N-38	Cu	Cu	Yellow	3.23	1.09	3/8	1.000	0.59	0.75	1.06	250 MCM	250 MCM - 1/0 AWG
GL350N	Cu	Cu	Red	4.52	1.28	1/2	1.750	0.70	0.87	1.10	350 MCM	350 MCM - 3/0 AWG
GL350N-38	Cu	Cu	Red	3.35	1.28	3/8	1.000	0.70	0.87	1.10	350 MCM	350 MCM - 3/0 AWG
GL400N	Cu	Cu	Blue	4.69	1.39	1/2	1.750	0.76	0.95	1.18	400 MCM	400 MCM - 4/0 AWG
GL500N	Cu	Cu	Brown	4.88	1.54	1/2	1.750	0.84	1.06	1.38	500 MCM	500 MCM - 250 MCM
GL500N-38	Cu	Cu	Brown	3.70	1.54	3/8	1.000	0.84	1.06	1.38	500 MCM	500 MCM - 250 MCM
GL600N	Cu	Cu	Green	5.04	1.72	1/2	1.750	0.93	1.19	1.50	600 MCM	600 MCM - 250 MCM
GL750N	Cu	Cu	Black	5.51	1.9	1/2	1.750	1.04	1.31	1.85	750 MCM	750 MCM - 500 MCM





# COMPRESSION LUGS

**GL-NB SERIES For Flexible Copper Cable**  
Short Barrel Copper 2-Hole  
with Peep Hole & Bell End



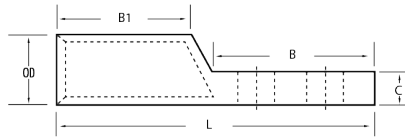
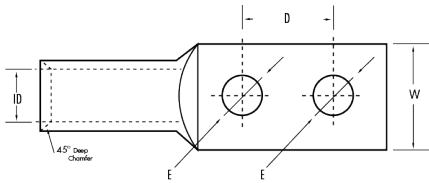
**POLARIS**<sup>®</sup>

## FEATURES

- Connector end has a gentle, continuous flare to ensure ease of cable insertion of flexible and extra-flexible cables such as locomotive, welding, mining cable and more.
- Produced from high conductivity copper tubing.
- Tin-plated to provide corrosion and low contact resistance.
- Marked with die index and color coded.
- Listed for 35KV maximum when properly installed.
- For applications greater than 2000V, install to cable Manufacturer voltage stress relief instructions.
- Flex rated - consult customer service for details.

## SPECIFICATIONS

- UL486A/B Listed Wire Connector.
- UL467 Grounding & Bonding (Sizes 8 AWG - 3/0 AWG).
- cULus Listed E155027.
- For max ampacity, Please Consult current NEC manual.
- Temperature Rating: 90 °C. 9CU.



**FLEX**RATED

SKU	Material	Conductor Type	Color Code	Length (IN)	Width (IN)	Mounting Bolt Size (E) (IN)	Mounting Hole Spacing (D) (IN)	Barrel ID (IN)	Barrel OD (IN)	Barrel Length (B1) (IN)	Wire Range	Expanded Wire Range (Class B/C Only)
<b>GL30NB</b>	Cu	Cu	Orange	4.29	0.90	1/2	1.750	0.49	0.62	0.98	3/0 AWG	3/0 AWG -2 AWG
<b>GL250NB</b>	Cu	Cu	Yellow	4.41	1.09	1/2	1.750	0.59	0.75	1.06	250 MCM	250 MCM-1/0 AWG
<b>GL300NB</b>	Cu	Cu	White	4.53	1.19	1/2	1.750	0.66	0.81	1.06	300 MCM	300 MCM-2/0 AWG
<b>GL350NB</b>	Cu	Cu	Red	4.53	1.28	1/2	1.750	0.70	0.87	1.10	350 MCM	350 MCM-3/0 AWG
<b>GL500NB</b>	Cu	Cu	Brown	4.88	1.54	1/2	1.750	0.84	1.06	1.38	500 MCM	500 MCM-250 MCM
<b>GL600NB</b>	Cu	Cu	Green	5.04	1.72	1/2	1.750	0.93	1.19	1.50	600 MCM	600 MCM-250 MCM
<b>GL700NB</b>	Cu	Cu	Pink	5.67	1.72	1/2	1.750	0.98	1.24	1.85	700 MCM	700 MCM-350 MCM



# COMPRESSION LUGS

## SL-N SERIES

Long Barrel Stacking Copper



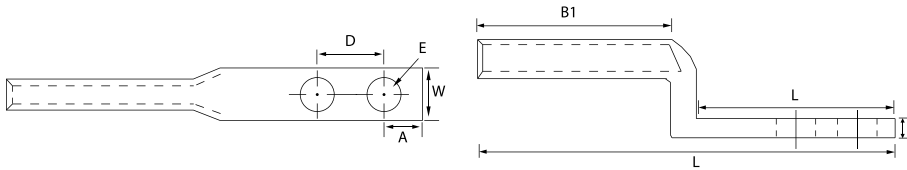
# POLARIS<sup>®</sup>

### FEATURES

- Produced from high conductivity copper tubing.
- Tin-Plated to provide corrosion resistance.
- Designed for use with the L-N Series.
- Marked with die index and color coded.
- For use with LN Series.
- Listed for 35KV maximum when properly installed.
- Flex rated - consult customer service for details.

### SPECIFICATIONS

- UL486A/B Listed Wire Connector.
- For max ampacity, Please Consult current NEC manual.
- Temperature Rating: 90 °C. 9CU.



SKU	Wire Range	Expanded Wire Range*	Color Code	Bolt Size (E) (IN)	Mounting Hole Spacing	Length (IN)	Width (IN)	End to center (A) (IN)	Tang Length (B) (IN)	Barrel Length (B1) (IN)
SL40N	4/0 AWG	4/0 - 1 AWG	Purple	0.50	1.75	5.17	1.00	0.64	2.86	2.03
SL250N	250 MCM	250 MCM - 1/0 AWG	Yellow	0.50	1.75	5.50	1.16	0.64	2.87	2.22
SL300N	300 MCM	300-2/0 AWG	White	0.50	1.75	5.75	1.16	0.64	2.92	2.48
SL350N	350 MCM	350 MCM - 3/0 AWG	Red	0.50	1.75	6.00	1.27	0.64	2.88	2.58
SL500N	500 MCM	500 - 250 MCM	Brown	0.50	1.75	6.00	1.55	0.64	2.78	2.86
SL600N	600 MCM	600 - 250 MCM	Green	0.50	1.75	6.75	1.70	0.64	2.76	3.46
SL750N	750 MCM	750 - 500 MCM	Black	0.50	1.75	6.75	1.88	0.64	2.85	3.48



# COMPRESSION LUGS

## L-N SERIES

Long Barrel Copper 2-Hole



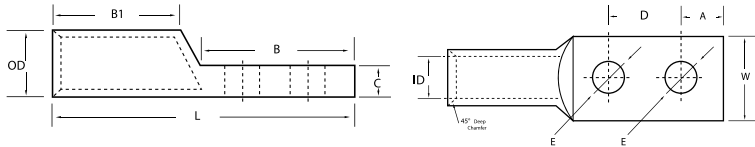
**POLARIS**<sup>®</sup>

### FEATURES

- Produced from high conductivity copper tubing.
- Tin-plated to provide corrosion and low contact resistance.
- Marked with die index and color coded.
- Listed for 35KV maximum when properly installed.
- For applications greater than 2000V, install to cable Manufacturer voltage stress relief instructions.
- Flex rated - consult customer service for details.

### SPECIFICATIONS

- UL486A/B Listed Wire Connector.
- UL467 Grounding & Bonding (Sizes 8 AWG - 3/0 AWG).
- For max ampacity, Please Consult current NEC manual.
- Temperature Rating: 90 °C. 9CU.



**FLEX**<sup>®</sup>**RATED**

SKU	Material	Conductor Type	Color Code	Length (IN)	Width (IN)	Mounting Bolt Size (E) (IN)	Mounting Hole Spacing (D) (IN)	Barrel ID (IN)	Barrel OD (IN)	Barrel Length (B1) (IN)	Wire Range	Expanded Wire Range (Class B/C Only)
L8N-14	Cu	Cu	Red	2.74	0.42	1/4	1.000	0.17	0.27	0.81	8 AWG	8 AWG
L8N-14P	Cu	Cu	Red	2.74	0.42	1/4	1.000	0.17	0.27	0.81	8 AWG	8 AWG
L8N-141	Cu	Cu	Red	2.19	0.42	1/4	0.625	0.17	0.27	0.81	8 AWG	8 AWG
L8N-141P	Cu	Cu	Red	2.19	0.42	1/4	0.625	0.17	0.27	0.81	8 AWG	8 AWG
L8N-142	Cu	Cu	Red	2.3	0.42	1/4	0.750	0.17	0.27	0.81	8 AWG	8 AWG
L8N-142P	Cu	Cu	Red	2.3	0.42	1/4	0.750	0.17	0.27	0.81	8 AWG	8 AWG
L8N-563	Cu	Cu	Red	3.92	0.55	5/16	1.750	0.17	0.27	0.81	8 AWG	8 AWG
L8N-563P	Cu	Cu	Red	3.92	0.55	5/16	1.750	0.17	0.27	0.81	8 AWG	8 AWG
L6N-12	Cu	Cu	Blue	2.24	0.42	1/4	0.500	0.21	0.3	0.98	6 AWG	6 AWG - 8 AWG
L6N-14	Cu	Cu	Blue	2.91	0.43	1/4	1.000	0.21	0.3	0.98	6 AWG	6 AWG - 8 AWG
L6N-14P	Cu	Cu	Blue	2.91	0.43	1/4	1.000	0.21	0.3	0.98	6 AWG	6 AWG - 8 AWG
L6N-141	Cu	Cu	Blue	2.36	0.42	1/4	0.625	0.21	0.3	0.98	6 AWG	6 AWG - 8 AWG
L6N-141P	Cu	Cu	Blue	2.36	0.42	1/4	0.625	0.21	0.3	0.98	6 AWG	6 AWG - 8 AWG
L6N-142	Cu	Cu	Blue	2.48	0.42	1/4	0.750	0.21	0.3	0.98	6 AWG	6 AWG - 8 AWG
L6N-142P	Cu	Cu	Blue	2.48	0.42	1/4	0.750	0.21	0.3	0.98	6 AWG	6 AWG - 8 AWG
L6N-143	Cu	Cu	Blue	2.48	0.42	1/4	0.750	0.21	0.3	0.98	6 AWG	6 AWG - 8 AWG
L6N-38	Cu	Cu	Blue	2.91	0.55	3/8	1.000	0.21	0.3	0.98	6 AWG	6 AWG - 8 AWG
L6N-38P	Cu	Cu	Blue	2.91	0.55	3/8	1.000	0.21	0.3	0.98	6 AWG	6 AWG - 8 AWG
L6N-382	Cu	Cu	Blue	2.72	0.55	3/8	0.750	0.21	0.3	0.98	6 AWG	6 AWG - 8 AWG
L6N-382P	Cu	Cu	Blue	2.72	0.55	3/8	0.750	0.21	0.3	0.98	6 AWG	6 AWG - 8 AWG
L6N	Cu	Cu	Blue	4.09	0.83	1/2	1.750	0.21	0.3	0.98	6 AWG	6 AWG - 8 AWG
L6NP	Cu	Cu	Blue	4.09	0.83	1/2	1.750	0.21	0.3	0.98	6 AWG	6 AWG - 8 AWG
L4N	Cu	Cu	Gray	4.09	0.87	1/2	1.750	0.25	0.34	0.98	4 AWG	4 AWG - 6 AWG
L4NP	Cu	Cu	Gray	4.09	0.87	1/2	1.750	0.25	0.34	0.98	4 AWG	4 AWG - 6 AWG
L4N-14	Cu	Cu	Gray	2.91	0.49	1/4	1.000	0.25	0.34	0.98	4 AWG	4 AWG - 6 AWG
L4N-14P	Cu	Cu	Gray	2.91	0.49	1/4	1.000	0.25	0.34	0.98	4 AWG	4 AWG - 6 AWG
L4N-141	Cu	Cu	Gray	2.36	0.49	1/4	0.625	0.25	0.34	0.98	4 AWG	4 AWG - 6 AWG
L4N-141P	Cu	Cu	Gray	2.36	0.49	1/4	0.625	0.25	0.34	0.98	4 AWG	4 AWG - 6 AWG
L4N-142	Cu	Cu	Gray	2.48	0.49	1/4	0.750	0.25	0.34	0.98	4 AWG	4 AWG - 6 AWG
L4N-142P	Cu	Cu	Gray	2.48	0.49	1/4	0.750	0.25	0.34	0.98	4 AWG	4 AWG - 6 AWG
L4N-38	Cu	Cu	Gray	2.91	0.55	3/8	1.000	0.25	0.34	0.98	4 AWG	4 AWG - 6 AWG
L4N-38P	Cu	Cu	Gray	2.91	0.55	3/8	1.000	0.25	0.34	0.98	4 AWG	4 AWG - 6 AWG



# COMPRESSION LUGS

## L-N SERIES (CONT'D)

Long Barrel Copper 2-Hole



**POLARIS**<sup>®</sup>

**FLEX**RATED

SKU	Material	Conductor Type	Color Code	Length (IN)	Width (IN)	Mounting Bolt Size (E) (IN)	Mounting Hole Spacing (D) (IN)	Barrel ID (IN)	Barrel OD (IN)	Barrel Length (B1) (IN)	Wire Range	Expanded Wire Range (Class B/C Only)
L4N-382	Cu	Cu	Gray	2.91	0.55	3/8	0.750	0.25	0.34	0.98	4 AWG	4 AWG - 6 AWG
L4N-382P	Cu	Cu	Gray	2.91	0.55	3/8	0.750	0.25	0.34	0.98	4 AWG	4 AWG - 6 AWG
L2N-141	Cu	Cu	Brown	2.52	0.6	1/4	0.625	0.32	0.42	1.1	2 AWG	2 AWG - 6 AWG
L2N-141P	Cu	Cu	Brown	2.52	0.6	1/4	0.625	0.32	0.42	1.1	2 AWG	2 AWG - 6 AWG
L2N-142	Cu	Cu	Brown	2.64	0.6	1/4	0.750	0.32	0.42	1.1	2 AWG	2 AWG - 6 AWG
L2N-14	Cu	Cu	Brown	3.07	0.6	1/4	1.000	0.32	0.42	1.1	2 AWG	2 AWG - 6 AWG
L2N-14P	Cu	Cu	Brown	3.07	0.6	1/4	1.000	0.32	0.42	1.1	2 AWG	2 AWG - 6 AWG
L2N	Cu	Cu	Brown	4.25	0.81	1/2	1.750	0.32	0.42	1.1	2 AWG	2 AWG - 6 AWG
L2NP	Cu	Cu	Brown	4.25	0.81	1/2	1.750	0.32	0.42	1.1	2 AWG	2 AWG - 6 AWG
L2N-56	Cu	Cu	Brown	2.87	0.6	5/16	0.750	0.32	0.42	1.1	2 AWG	2 AWG - 6 AWG
L2N-38	Cu	Cu	Brown	3.07	0.6	3/8	1.000	0.32	0.42	1.1	2 AWG	2 AWG - 6 AWG
L2N-38P	Cu	Cu	Brown	3.07	0.6	3/8	1.000	0.32	0.42	1.1	2 AWG	2 AWG - 6 AWG
L2N-382	Cu	Cu	Brown	2.87	0.6	3/8	0.750	0.32	0.42	1.1	2 AWG	2 AWG - 6 AWG
L2N-382P	Cu	Cu	Brown	2.87	0.6	3/8	0.750	0.32	0.42	1.1	2 AWG	2 AWG - 6 AWG
L2N-383	Cu	Cu	Brown	4.25	0.81	3/8	1.750	0.32	0.42	1.1	2 AWG	2 AWG - 6 AWG
L2N-383P	Cu	Cu	Brown	4.25	0.81	3/8	1.750	0.32	0.42	1.1	2 AWG	2 AWG - 6 AWG
L1N	Cu	Cu	Green	4.29	0.75	1/2	1.750	0.36	0.47	1.1	1 AWG	1 AWG - 6 AWG
L1N-38	Cu	Cu	Green	3.07	0.67	3/8	1.000	0.36	0.47	1.1	1 AWG	1 AWG - 6 AWG
L1N-141	Cu	Cu	Green	2.56	0.67	1/4	0.630	0.36	0.47	1.1	1 AWG	1 AWG - 6 AWG
L10N-14	Cu	Cu	Pink	3.2	0.74	1/4	1.000	0.39	0.52	1.2	1/0 AWG	1/0 AWG-6 AWG
L10N-14P	Cu	Cu	Pink	2.66	0.74	1/4	0.625	0.39	0.52	1.2	1/0 AWG	1/0 AWG - 6 AWG
L10N	Cu	Cu	Pink	4.39	0.74	1/2	1.750	0.39	0.52	1.2	1/0 AWG	1/0 AWG - 6 AWG
L10NP	Cu	Cu	Pink	4.39	0.74	1/2	1.750	0.39	0.52	1.2	1/0 AWG	1/0 AWG - 6 AWG
L10N-38	Cu	Cu	Pink	3.21	0.74	3/8	1.000	0.39	0.52	1.2	1/0 AWG	1/0 AWG - 6 AWG
L10N-38P	Cu	Cu	Pink	3.21	0.74	3/8	1.000	0.39	0.52	1.2	1/0 AWG	1/0 AWG - 6 AWG
L10N-382	Cu	Cu	Pink	3.01	0.74	3/8	0.750	0.39	0.52	1.2	1/0 AWG	1/0 AWG - 6 AWG
L10N-382P	Cu	Cu	Pink	3.01	0.74	3/8	0.750	0.39	0.52	1.2	1/0 AWG	1/0 AWG - 6 AWG
L10N-383	Cu	Cu	Pink	4.63	0.74	3/8	1.750	0.39	0.52	1.2	1/0 AWG	1/0 AWG - 6 AWG
L10N-383P	Cu	Cu	Pink	4.63	0.74	3/8	1.750	0.39	0.52	1.2	1/0 AWG	1/0 AWG - 6 AWG
L20N-14	Cu	Cu	Black	3.43	0.81	1/4	1.000	0.44	0.56	1.38	2/0 AWG	2/0 AWG - 4 AWG
L20N-14P	Cu	Cu	Black	2.99	0.82	1/4	0.750	0.44	0.56	1.38	2/0 AWG	2/0 AWG - 4 AWG
L20N-141	Cu	Cu	Black	2.87	0.81	1/4	0.625	0.44	0.56	1.38	2/0 AWG	2/0 AWG - 4 AWG
L20N-141P	Cu	Cu	Black	2.87	0.81	1/4	0.625	0.44	0.56	1.38	2/0 AWG	2/0 AWG - 4 AWG
L20N-142	Cu	Cu	Black	2.99	0.82	1/4	0.750	0.44	0.56	1.38	2/0 AWG	2/0 AWG - 4 AWG
L20N-38	Cu	Cu	Black	3.43	0.82	3/8	1.000	0.44	0.56	1.38	2/0 AWG	2/0 AWG - 4 AWG
L20N-38P	Cu	Cu	Black	3.43	0.82	3/8	1.000	0.44	0.56	1.38	2/0 AWG	2/0 AWG - 4 AWG
L20N-383	Cu	Cu	Black	4.61	0.82	3/8	1.750	0.44	0.56	1.38	2/0 AWG	2/0 AWG - 4 AWG
L20N-383P	Cu	Cu	Black	4.61	0.82	3/8	1.750	0.44	0.56	1.38	2/0 AWG	2/0 AWG - 4 AWG
L20N	Cu	Cu	Black	4.61	0.82	1/2	1.750	0.44	0.56	1.38	2/0 AWG	2/0 AWG - 4 AWG
L20NP	Cu	Cu	Black	4.61	0.82	1/2	1.750	0.44	0.56	1.38	2/0 AWG	2/0 AWG - 4 AWG
L30N-141	Cu	Cu	Orange	2.95	0.9	1/4	0.625	0.49	0.62	1.38	3/0 AWG	3/0 AWG - 2 AWG
L30N-141P	Cu	Cu	Orange	2.95	0.9	1/4	0.625	0.49	0.62	1.38	3/0 AWG	3/0 AWG - 2 AWG
L30N-38	Cu	Cu	Orange	3.5	0.9	3/8	1.000	0.49	0.62	1.38	3/0 AWG	3/0 AWG - 2 AWG
L30N-38P	Cu	Cu	Orange	3.5	0.9	3/8	1.000	0.49	0.62	1.38	3/0 AWG	3/0 AWG - 2 AWG
L30N-56	Cu	Cu	Orange	3.5	0.9	5/16	1.000	0.49	0.62	1.38	3/0 AWG	3/0 AWG - 2 AWG



# COMPRESSION LUGS

## L-N SERIES (CONT'D)

Long Barrel Copper 2-Hole



**POLARIS**<sup>®</sup>

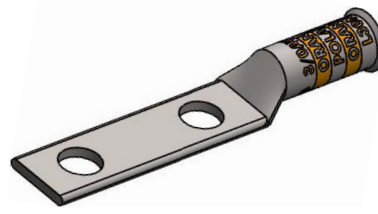


SKU	Material	Conductor Type	Color Code	Length (IN)	Width (IN)	Mounting Bolt Size (E) (IN)	Mounting Hole Spacing (D) (IN)	Barrel ID (IN)	Barrel OD (IN)	Barrel Length (B1) (IN)	Wire Range	Expanded Wire Range (Class B/C Only)
L30N-56P	Cu	Cu	Orange	3.5	0.9	5/16	1.000	0.49	0.62	1.38	3/0 AWG	3/0 AWG - 2 AWG
L30N	Cu	Cu	Orange	4.65	0.9	1/2	1.750	0.49	0.62	1.38	3/0 AWG	3/0 AWG - 2 AWG
L30NP	Cu	Cu	Orange	4.65	0.9	1/2	1.750	0.49	0.62	1.38	3/0 AWG	3/0 AWG - 2 AWG
L40N-141	Cu	Cu	Purple	2.99	1	1/4	0.625	0.55	0.69	1.42	4/0 AWG	4/0 AWG - 1 AWG
L40N-141P	Cu	Cu	Purple	2.99	1	1/4	0.625	0.55	0.69	1.42	4/0 AWG	4/0 AWG - 1 AWG
L40N-142	Cu	Cu	Purple	3.1	1	1/4	0.750	0.55	0.69	1.42	4/0 AWG	4/0 AWG - 1 AWG
L40N-142P	Cu	Cu	Purple	3.1	1	1/4	0.750	0.55	0.69	1.42	4/0 AWG	4/0 AWG - 1 AWG
L40N-38	Cu	Cu	Purple	3.54	1	3/8	1.000	0.55	0.69	1.42	4/0 AWG	4/0 AWG - 1 AWG
L40N-38P	Cu	Cu	Purple	3.54	1	3/8	1.000	0.55	0.69	1.42	4/0 AWG	4/0 AWG - 1 AWG
L40N-383	Cu	Cu	Purple	4.73	1	3/8	1.750	0.55	0.69	1.42	4/0 AWG	4/0 AWG - 1 AWG
L40N-383P	Cu	Cu	Purple	4.73	1	3/8	1.750	0.55	0.69	1.42	4/0 AWG	4/0 AWG - 1 AWG
L40N	Cu	Cu	Purple	4.72	1	1/2	1.750	0.55	0.69	1.42	4/0 AWG	4/0 AWG - 1 AWG
L40NP	Cu	Cu	Purple	4.72	1	1/2	1.750	0.55	0.69	1.42	4/0 AWG	4/0 AWG - 1 AWG
L250N	Cu	Cu	Yellow	4.96	1.09	1/2	1.750	0.59	0.75	1.61	250 MCM	250 MCM - 1/0 AWG
L250NP	Cu	Cu	Yellow	4.96	1.09	1/2	1.750	0.59	0.75	1.61	250 MCM	250 MCM - 1/0 AWG
L250N-38	Cu	Cu	Yellow	3.78	1.09	3/8	1.000	0.59	0.75	1.61	250 MCM	250 MCM - 1/0 AWG
L300N	Cu	Cu	White	5.32	1.19	1/2	1.750	0.66	0.82	1.97	300 MCM	300 MCM - 2/0 AWG
L300NP	Cu	Cu	White	5.32	1.19	1/2	1.750	0.66	0.82	1.97	300 MCM	300 MCM - 2/0 AWG
L30NB	Cu	Cu	Orange	5.39	1.28	1/2	1.750	0.49	0.62	1.38	3/0 AWG	3/0 AWG - 2 AWG
L40NB	Cu	Cu	Purple	5.75	1.54	1/2	1.750	0.55	0.69	1.42	4/0 AWG	4/0 AWG - 1 AWG
L250NB	Cu	Cu	Yellow	5.32	1.19	1/2	1.750	0.59	0.75	1.61	250 MCM	250 MCM - 1/0 AWG
L350N	Cu	Cu	Red	5.39	1.28	1/2	1.750	0.7	0.87	1.97	350 MCM	350 MCM - 3/0 AWG
L350NP	Cu	Cu	Red	5.39	1.28	1/2	1.750	0.7	0.87	1.97	350 MCM	350 MCM - 3/0 AWG
L350N-38	Cu	Cu	Red	4.21	1.28	3/8	1.000	0.7	0.87	1.97	350 MCM	350 MCM - 3/0 AWG
L400N	Cu	Cu	Blue	5.47	1.39	1/2	1.750	0.76	0.95	1.97	400 MCM	400 MCM - 4/0 AWG
L400NP	Cu	Cu	Blue	5.47	1.39	1/2	1.750	0.76	0.95	1.97	400 MCM	400 MCM - 4/0 AWG
L500N	Cu	Cu	Brown	5.75	1.54	1/2	1.750	0.84	1.06	2.24	500 MCM	500 MCM - 250 MCM
L500NP	Cu	Cu	Brown	5.75	1.54	1/2	1.750	0.84	1.06	2.24	500 MCM	500 MCM - 250 MCM
L500N-38	Cu	Cu	Brown	4.57	1.54	3/8	1.000	0.84	1.06	2.24	500 MCM	500 MCM - 250 MCM
L600N	Cu	Cu	Green	5.79	1.72	1/2	1.750	0.93	1.19	2.24	600 MCM	600 MCM - 250 MCM
L600NP	Cu	Cu	Green	5.79	1.72	1/2	1.750	0.93	1.19	2.24	600 MCM	600 MCM - 250 MCM
L600N-38	Cu	Cu	Green	4.61	1.72	3/8	1.000	0.93	1.19	2.24	600 MCM	600 MCM - 250 MCM
L700N	Cu	Cu	Pink	6.3	1.77	1/2	1.750	0.98	1.24	2.64	700 MCM	700 MCM - 350 MCM
L700NP	Cu	Cu	Pink	6.3	1.77	1/2	1.750	0.98	1.24	2.64	700 MCM	700 MCM - 350 MCM
L750N	Cu	Cu	Black	6.3	1.9	1/2	1.750	1.04	1.31	2.64	750 MCM	750 MCM - 500 MCM
L750NP	Cu	Cu	Black	6.3	1.9	1/2	1.750	1.04	1.31	2.64	750 MCM	750 MCM - 500 MCM
L750N-38	Cu	Cu	Black	5.12	1.9	3/8	1.000	1.04	1.31	2.64	750 MCM	750 MCM - 500 MCM
L75048	Cu	Cu	Black	5.16	1.9	1/2	1.000	1.04	1.31	2.64	750 MCM	750 MCM - 500 MCM
L75058	Cu	Cu	Black	5.16	1.9	5/8	1.000	1.04	1.31	2.64	750 MCM	750 MCM - 500 MCM
L1000N	Cu	Cu	White	6.81	2.18	1/2	1.750	1.19	1.53	3.15	1000 MCM	1000 MCM - 750 MCM
L1000NP	Cu	Cu	White	6.81	2.18	1/2	1.750	1.19	1.53	3.15	1000 MCM	1000 MCM - 750 MCM



# COMPRESSION LUGS

*L-NB SERIES For Flexible Copper Cable*  
Long Barrel Copper 2-Hole with Bell End



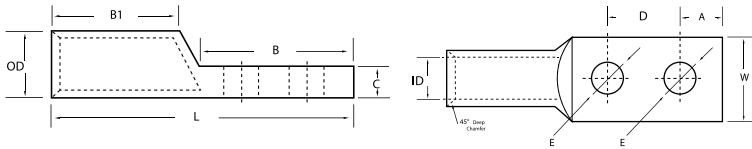
**POLARIS**<sup>®</sup>

## FEATURES

- Connector end has a gentle, continuous flare to ensure ease of cable insertion of flexible and extra-flexible cables such as locomotive, welding, mining cable and more.
- Produced from high conductivity copper tubing.
- Tin-plated to provide corrosion and low contact resistance.
- Marked with die index and color coded.
- Listed for 35KV maximum when properly installed.
- For applications greater than 2000V, install to cable Manufacturer voltage stress relief instructions.
- Flex rated - consult customer service for details.

## SPECIFICATIONS

- UL486A/B Listed Wire Connector.
- UL467 Grounding & Bonding (Sizes 8 AWG - 3/0 AWG).
- For max ampacity, Please Consult current NEC manual.
- Temperature Rating: 90 °C. 9CU.



**FLEX**RATED

SKU	Material	Conductor Type	Color Code	Length (IN)	Width (IN)	Mounting Bolt Size (E) (IN)	Mounting Hole Spacing (D) (IN)	Barrel ID (IN)	Barrel OD (IN)	Barrel Length (B1) (IN)	Wire Range	Expanded Wire Range (Class B/C Only)
<b>L30NB</b>	Cu	Cu	Orange	5.39	1.28	1/2	1.750	0.49	0.62	1.38	3/0 AWG	3/0 AWG - 2 AWG
<b>L250NB</b>	Cu	Cu	Yellow	5.32	1.19	1/2	1.750	0.59	0.75	1.61	250 MCM	250 MCM - 1/0 AWG
<b>L350NB</b>	Cu	Cu	Red	4.72	1	1/2	1.750	0.7	0.87	1.97	350 MCM	350 MCM - 3/0 AWG
<b>L500NB</b>	Cu	Cu	Brown	5.79	1.72	1/2	1.750	0.84	1.06	2.24	500 MCM	500 MCM - 250 MCM
<b>L600NB</b>	Cu	Cu	Green	6.3	1.77	1/2	1.750	0.92	1.19	2.24	600 MCM	600 MCM - 250 MCM
<b>L700NB</b>	Cu	Cu	Pink	6.3	1.9	1/2	1.750	0.98	1.24	2.64	700 MCM	700 MCM - 350 MCM
<b>L750NB</b>	Cu	Cu	Black	6.3	1.9	1/2	1.750	1.04	1.31	2.64	750 MCM	750 MCM - 500 MCM
<b>L100NB</b>	Cu	Cu	White	4.96	1.09	1/2	1.750	1.19	1.53	3.15	1000 MCM	1000 MCM - 750 MCM





# COMPRESSION LUGS

## AL SERIES

Aluminum 1-Hole Standard Barrel



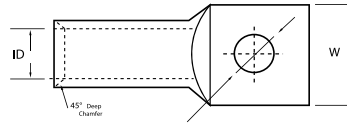
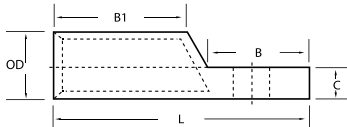
# POLARIS®

### FEATURES

- Produced from high conductivity aluminum tubing.
- Electro-tin plated for corrosion resistance.
- Color coded and marked with die index information.
- Pre-filled with oxide inhibitor and capped with color coded cap.
- Flex rated - consult customer service for details.

### SPECIFICATIONS

- cULus Listed for Wire Connector.
- UL486A/B Listed for Wire Connector.
- UL Listed to 35kV when properly installed to cable manufacturers specifications.
- Temperature Rating: 90 °C. AL9CU



SKU	Material	Conductor Type	Color Code	Mounting Bolt Size (E) (IN)	Length (IN)	Width (IN)	Barrel ID (IN)	Barrel OD (IN)	Barrel Length (B1) (IN)	Wire Range	Expanded Wire Range (Class B/C Only)
AL8-14	Al	Cu, Al	Blue	1/4	1.55 <sup>E</sup>	0.63	0.18	0.3	0.56	8 AWG	8 AWG
AL6-14	Al	Cu, Al	Gray	1/4	2.01 <sup>E</sup>	0.57	0.2	0.34	0.86	6 AWG	6 AWG - 8 AWG
AL4-14	Al	Cu, Al	Green	1/4	2.31	0.57	0.25	0.44	1.1	4 AWG	4 AWG - 6 AWG
AL4-38	Al	Cu, Al	Green	3/8	2.39	0.65	0.25	0.44	1.1	4 AWG	4 AWG - 6 AWG
AL2-14	Al	Cu, Al	Pink	1/4	2.5	0.71	0.31	0.53	1.2	2 AWG	2 AWG - 6 AWG
AL2-38	Al	Cu, Al	Pink	3/8	2.5	0.71	0.31	0.53	1.2	2 AWG	2 AWG - 6 AWG
AL1-14	Al	Cu, Al	Gold	1/4	2.5	0.73	0.35	0.53	1.2	1 AWG	1 AWG - 6 AWG
AL1/0-38	Al	Cu, Al	Tan	3/8	2.81	0.85	0.39	0.63	1.2	1/0 AWG	1/0 AWG - 6 AWG
AL1/0-48	Al	Cu, Al	Tan	3/8	2.81	0.85	0.39	0.63	1.2	1/0 AWG	1/0 AWG - 6 AWG
AL2/0-38	Al	Cu, Al	Olive	3/8	2.81	0.94	0.44	0.69	1.3	2/0 AWG	2/0 AWG - 4 AWG
AL2/0-48	Al	Cu, Al	Olive	1/2	2.81	0.94	0.44	0.69	1.3	2/0 AWG	2/0 AWG - 4 AWG
AL3/0-38	Al	Cu, Al	Ruby	3/8	3	1.03	0.48	0.76	1.4	3/0 AWG	3/0 AWG - 2 AWG
AL3/0-48	Al	Cu, Al	Ruby	1/2	3	1.03	0.48	0.76	1.4	3/0 AWG	3/0 AWG - 2 AWG
AL4/0-38	Al	Cu, Al	White	3/8	3.43	1.15	0.55	0.84	1.4	4/0 AWG	4/0 AWG - 1 AWG
AL4/0-48	Al	Cu, Al	White	1/2	3.43	1.15	0.55	0.84	1.4	4/0 AWG	4/0 AWG - 1 AWG
AL250-48	Al	Cu, Al	Red	1/2	3.5	1.26	0.59	0.92	1.5	250 MCM	250 MCM - 1/0 AWG
AL300-48	Al	Cu, Al	Blue	1/2	4	1.37	0.65	1.01	1.6	300 MCM	300 MCM - 2/0 AWG
AL350-48	Al	Cu, Al	Brown	1/2	4.25	1.52	0.72	1.12	1.9	350 MCM	350 MCM - 3/0 AWG
AL400-48	Al	Cu, Al	Green	1/2	4.68	1.61	0.76	1.19	2.3	400 MCM	400 MCM - 4/0 AWG
AL500-48	Al	Cu, Al	Pink	1/2	4.75	1.79	0.84	1.32	2.5	500 MCM	500 MCM - 250 MCM
AL500-58	Al	Cu, Al	Pink	5/8	4.75	1.79	0.84	1.32	2.5	500 MCM	500 MCM - 250 MCM
AL600-48	Al	Cu, Al	Black	1/2	5.12	1.96	0.92	1.44	2.6	600 MCM	600 MCM - 250 MCM
AL600-58	Al	Cu, Al	Black	5/8	5.12	1.96	0.92	1.44	2.6	600 MCM	600 MCM - 250 MCM
AL750-48	Al	Cu, Al	Yellow	1/2	6.12	2.19	1.03	1.6	3.2	750 MCM	750 MCM - 500 MCM
AL750-58	Al	Cu, Al	Yellow	5/8	6.12	2.19	1.03	1.6	3.2	750 MCM	750 MCM - 500 MCM
AL1000-58	Al	Cu, Al	Brown	5/8	6.12	2.5	1.17	1.83	3.2	1000 MCM	1000 MCM - 750 MCM



# COMPRESSION LUGS

## AL-N SERIES

Aluminum 2-Hole Standard Barrel



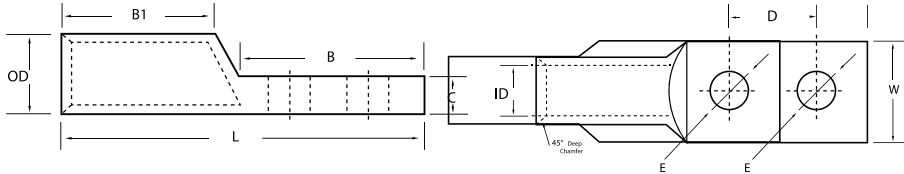
**POLARIS**<sup>®</sup>

### FEATURES

- Produced from high conductivity aluminum tubing.
- Electro-tin plated for corrosion resistance.
- Color coded and marked with die index information.
- Pre-filled with oxide inhibitor and capped with color coded cap.
- Flex rated - consult customer service for details.

### SPECIFICATIONS

- cULus Listed for Wire Connector.
- UL486A/B Listed for Wire Connector.
- UL Listed to 35kV when properly installed to cable manufacturers specifications.
- Temperature Rating: 90 °C. AL9CU



SKU	Material	Conductor Type	Color Code	Mounting Bolt Size (E) (IN)	Length (IN)	Width (IN)	Barrel ID (IN)	Barrel OD (IN)	Barrel Length (B1) (IN)	Wire Range	Expanded Wire Range (Class B/C Only)
AL1/0N	Al	Cu, Al	Tan	1/2	4.75	0.85	0.39	0.63	1.2	1/0 AWG	1/0 AWG - 6 AWG
AL1000N	Al	Cu, Al	Brown	1/2	7.87	2.5	1.17	1.83	3.62	1000 MCM	1000 MCM - 750 MCM
AL2/0N	Al	Cu, Al	Olive	1/2	4.8	0.94	0.44	0.69	1.3	2/0 AWG	2/0 AWG - 4 AWG
AL250N	Al	Cu, Al	Red	1/2	5.31	1.26	0.59	0.92	1.5	250 MCM	250 MCM - 1/0 AWG
AL3/0N	Al	Cu, Al	Ruby	1/2	5	1.03	0.48	0.76	1.4	3/0 AWG	3/0 AWG - 2 AWG
AL300N	Al	Cu, Al	Blue	1/2	5.5	1.37	0.65	1.01	1.6	300 MCM	300 MCM - 2/0 AWG
AL350N	Al	Cu, Al	Brown	1/2	5.87	1.52	0.72	1.12	1.9	350 MCM	350 MCM - 3/0 AWG
AL4/0N	Al	Cu, Al	White	1/2	5.25	1.15	0.55	0.84	1.4	4/0 AWG	4/0 AWG - 1 AWG
AL400N	Al	Cu, Al	Green	1/2	6.43	1.61	0.76	1.19	2.3	400 MCM	400 MCM - 4/0 AWG
AL500N	Al	Cu, Al	Pink	1/2	6.5	1.79	0.84	1.32	2.5	500 MCM	500 MCM - 250 MCM
AL600N	Al	Cu, Al	Black	1/2	6.75	1.96	0.92	1.44	2.6	600 MCM	600 MCM - 250 MCM
AL750N	Al	Cu, Al	Yellow	1/2	7.37	2.19	1.03	1.6	3.2	750 MCM	750 MCM - 500 MCM
AL350N-NT	Al	Cu, Al	Brown	1/2	5.87	1.08	0.72	1.12	1.9	350 MCM	350 MCM - 3/0 AWG
AL500N-NT	Al	Cu, Al	Pink	1/2	6.5	1.29	0.84	1.32	2.5	500 MCM	500 MCM - 250 MCM
AL600N-NT	Al	Cu, Al	Black	1/2	6.75	1.41	0.92	1.44	2.6	600 MCM	600 MCM - 250 MCM
AL750N-NT	Al	Cu, Al	Yellow	1/2	7.37	1.44	1.03	1.6	3.2	750 MCM	750 MCM - 500 MCM

# COMPRESSION LUGS

## CAL SERIES

Dual Rated Meter Socket

### FEATURES

- Made of dead-soft EC grade aluminum.
- 840 common dies – one die installs on all sizes. For aluminum or copper conductors. Pre-filled with oxide inhibitor.
- Installing dies (red): .840, 18, 324, TX, 76, 11A, 249.
- AL-CU - Lugs meet or exceed ANSI C119.4 specs.

SKU	Length (IN)	Width (IN)	Mounting Bolt Size (IN)	Tang Length (IN)	Conductor		
					Stranded	Solid	Compact
CAL1-48	3.25	0.904	1/2	1.3125	4	3	4
CAL10	3.25	0.904	3/8	1.3125	2	1	2
CAL2	3.25	0.904	3/8	1.3125	1	3/0	1
CAL20	3.25	0.904	3/8	1.3125	3/0	3/0	3/0
CAL20-48	3.25	0.904	1/2	1.3125	3/0	3/0	3/0
CAL30-48	3.25	0.904	1/2	1.3125	3/0	3/0	3/0
CAL4	3.25	0.904	3/8	1.3125	3/0	3/0	3/0
CAL40	3.25	0.904	3/8	1.3125	3/0	-	3/0
CAL40-48	3.25	0.904	1/2	1.3125	3/0	-	3/0

