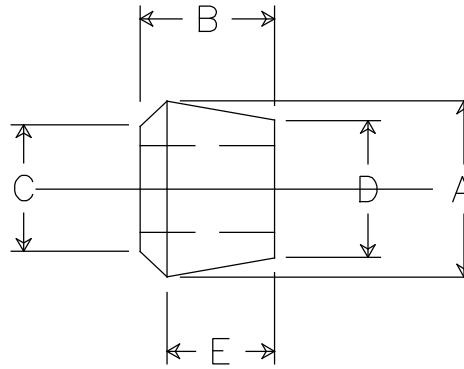
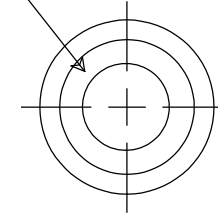


DIMENSIONS

A	.875 NOMINAL $\pm .015$ *
B	.656 $\pm .020$ *
C	.625 $\pm .015$ *
D	.687 REF.
E	.531 REF.



HOLE SIZE



PART NO.	HOLE DIAMETER $\pm .010$
SRB-103	.188 *
SRB-104	.250 *
SRB-105	.312 *
SRB-106	.375 *
SRB-107	.438 *
SRB-108	.500 *
SRB-109	.562 *
SRB-110	.625 *

NOTES:

- 1.) ANGULAR TOLERANCE $\pm 1/2^\circ$
- 2.) FLASH TO BE HELD TO A MINIMUM AND MAY NOT WEBB ACROSS HOLE DIA.
- 3.) ID/OD CONCENTRICITY WITHIN .020

* INDICATES CRITICAL INSPECTION DIMENSIONS

REMKE INDUSTRIES

Wheeling, Illinois 60090

SCALE: APPROX FULL
 MAT'L: NEOPRENE 50-60 DUROMETER A
 FINISH: NATURAL
 PART NAME: BUSHING
 PART NUMBER: SRB-103 THRU SRB-110
 DRAWING DATE: 930204

REV.	DATE	CHANGE	
A	4/20/00	ADDED TOLERANCES & NOTES	UNLESS OTHERWISE SPECIFIED 3-PLC. DIM. $\pm .005$ 2-PLC. DIM. $\pm .010$ 1-PLC. DIM. $\pm .015$ FRACTIONAL $\pm 1/64$ ANGULAR ± 1