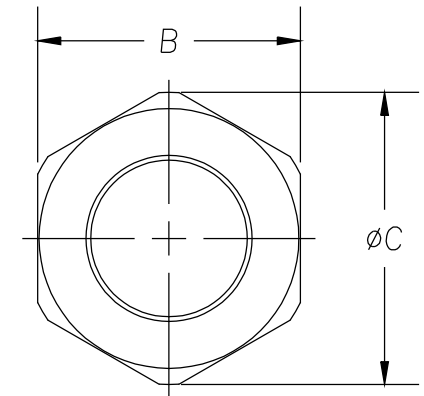
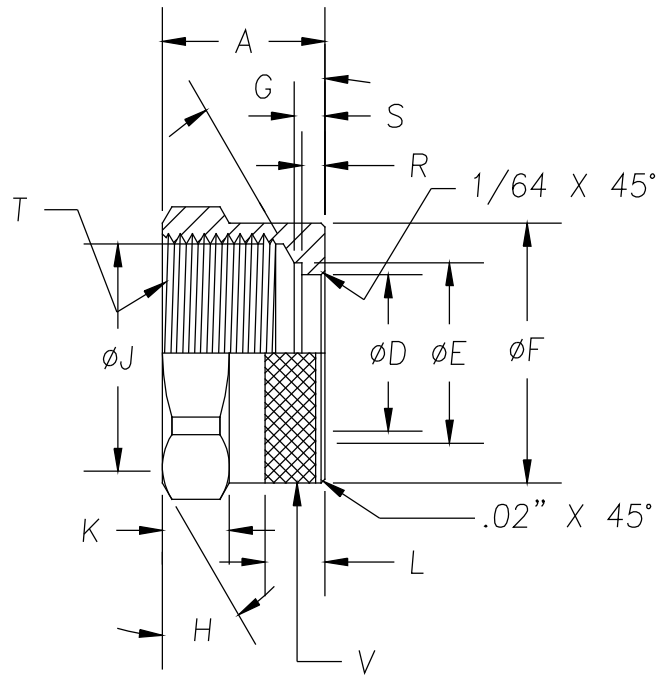
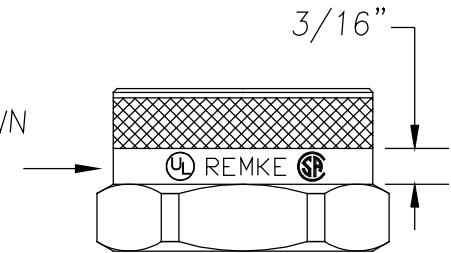


DIMENSIONS

- A .850"
- B 1-3/8" HEX
- C ϕ 1.530"
- D ϕ .820"
- E ϕ .945"
- F ϕ 1.360" BEFORE KNURL
- * G 30 DEG.
- H 30° CHAMF. TO DIA. 1.360" (TYP. BOTH SIDES OF HEX)
- * J ϕ 1.190"
- K .350"
- L .31"
- * R .120"
- S .160"
- * T 1-1/4"-16 UN-2B THREAD
- V 20 TPI KNURL 17/64" WIDE



NOTE: IMPRINT REMKE AS SHOWN CENTERED IN 3/16" SPACE ABOVE HEX CHARACTER HEIGHT TO BE 1/8"



NOTES:

- 1.) PART TO BE FREE OF BURRS AND SHARP CORNERS PARTICULARLY @ BORE "D"
- 2.) * INDICATES CRITICAL INSPECTION DIMENSIONS

REV.	DATE	CHANGE	
C	12/23/92	REDRAWN USING CADD	UNLESS OTHERWISE SPECIFIED 3-PLC. DIM. +/-.005 2-PLC. DIM. +/-.010 1-PLC. DIM. +/-.015 FRACTIONAL +/-.1/64 ANGULAR +/-.1°
D	7/7/93	CHANGED DIM "G" TO 35°	
E	12/5/93	ADD FLAT DIM E & S. CHANGE DIM. "R" TO .120 AND DIM G TO 30 DEGREES	
F	2/2/10	ADD PRINT INFO UL-REMKE CSA	

REMKE INDUSTRIES
Wheeling, Illinois 60090

SCALE: FULL
MATERIAL: 6462 T6511
FINISH: MACHINED NATURAL
PART NAME: NUT
PART NUMBER: RSR-200-N
DRAWING DATE: 2/2/10 C.V.