



Before



After

Stained with
Red Tone Dark
Photo courtesy of
Nicholas Martin.

Restore
the Wood
Nature Destroyed

WHY TRANSFORMATION LOG & TIMBER STAIN?

- **Beautiful glossy finish:** showcases the natural woodgrain.
- **Flexible and durable** blend of oils both penetrate and leave a flexible film to protect against insect, moisture, and UV damage.
- **Ideal for restoration projects** where the current stain is either a non-drying oil or unknown. (But also great on new builds, too!)
- **Chemically compatible** with all Sashco caulking and chinking products.
- **Exquisite color portfolio** curated specifically for log homes.
- **14 popular colors to choose from.** Pick one of the “out of the bucket” colors or layer different colors for a shade unique to you.

Transformation Log & Timber Stain®

sashco.com

800-767-5656

Follow @sashcologhomes and @sashcoinc on:



TRNCOLORCARD0050225

Transformation Log & Timber Stain® *color chart*



Stained with Natural
Photo courtesy of
Homestead Log Homes



PROVEN *Durability*

TWP®
1500 Series

Sashco®
Transformation Stain®
Log & Timber

Covered

Exposed to
the elements
for 24 mos.



*TWP® is a trademark of its respective owner.

NEVER SURRENDER YOUR FATE TO A *color card*

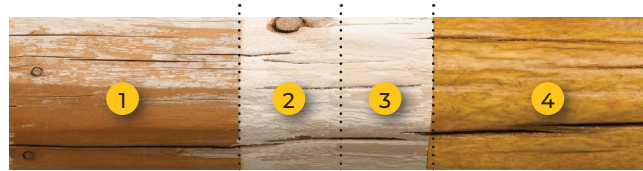
Wood age, porosity, species, and more will affect the final outcome of the color on your home. Scan the QR code to request free stain samples, download the full Transformation Log & Timber Performance Report, and more.



THE *Restoration* PROCESS

The log below highlights the stain restoration process on a log home:

1. Peeling stain and gray, weathered surfaces...
2. ...Are brought back down to bare wood, then...
3. Buffed to remove fuzzing - a clean, sound surface ready to be...
4. Stained with Transformation Log & Timber.
5. When regularly maintained with a fresh coat of stain, weathered, neglected wood is a thing of the past.



Originally Stained & Weathered Wood Media Blasted Osborn Brush Transformation Stain

Transformation Log & Timber

ON RESTORED PINE LOGS

Gold Tone Light



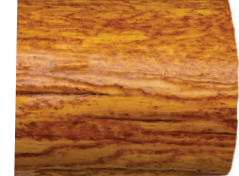
Red Tone Light



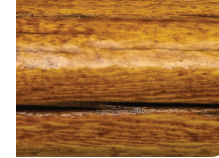
Gold Tone Medium



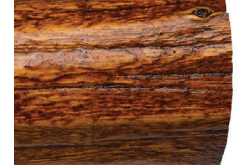
Red Tone Medium



Gold Tone Dark



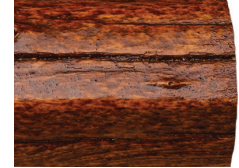
Red Tone Dark



Brown Tone Light



Redwood



Brown Tone Medium



Natural



Brown Tone Dark



Dark Walnut



Brown Tone Gray



Brown Tone Neutral



These are meant to be representative only. The color may vary significantly based on the species, texture, and porosity of wood, as well as the application technique. Test the stain on an inconspicuous area to make sure you get the color you want.

Stained with Sashco's Transformation Natural
Photo courtesy of Homestead Log Homes

