

Installation Instructions

SMC11 Magnetic Line Contactor

Electrical Ratings:

SUPCO No.	Coil Voltage	Full Load Amps	Resistive Amps	Locked Rotor Amps	Switching
SMC11	24	30	30	125	DPST

Coil Data:

Coil Volt	Pick-up Hot	Max. Cold
24	20.5	19.2

Caution: Disconnect power before servicing equipment.

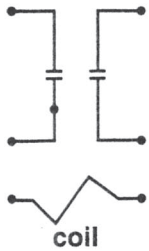
Installation:

1. Mount new SUPCO contactor in any position, except with metal mounting base on top. Optional universal mounting bracket kit, SUPCO part no. SMC11B, includes bracket, push-on terminal adapters and screws to facilitate mounting.

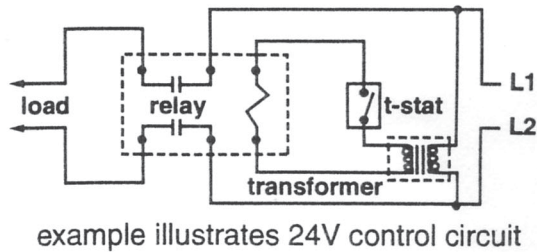
2. Refer to diagrams below and wire accordingly.

3. Restore power and check operation.

schematic:



typical wiring:



Installation Instructions

SMC11 Magnetic Line Contactor

Electrical Ratings:

SUPCO No.	Coil Voltage	Full Load Amps	Resistive Amps	Locked Rotor Amps	Switching
SMC11	24	30	30	125	DPST

Coil Data:

Coil Volt	Pick-up Hot	Max. Cold
24	20.5	19.2

Caution: Disconnect power before servicing equipment.

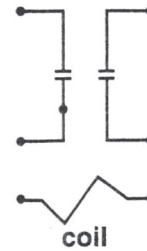
Installation:

1. Mount new SUPCO contactor in any position, except with metal mounting base on top. Optional universal mounting bracket kit, SUPCO part no. SMC11B, includes bracket, push-on terminal adapters and screws to facilitate mounting.

2. Refer to diagrams below and wire accordingly.

3. Restore power and check operation.

schematic:



typical wiring:

