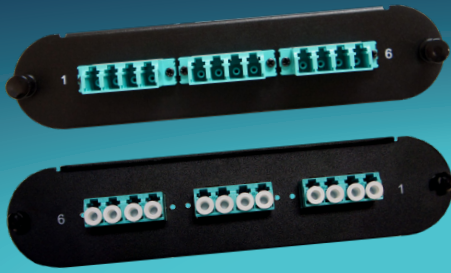


Corning® CCH Compatible Adapter Plates

Buying Guide



Clear Numbering

Number scheme screened on both sides

Secure Fit

LYNN uses screws or spring lock technology to secure all adapters into our panels

Large Inventory

Large inventory of parts for any configuration

- Insertion Loss (dB): 0.03 - 0.01 (SM), 0.04 - 0.02 (MM)
- Operation Temperature: -40 - +85
- Over 500 matings
- Flammability: UL94 V-0 Grade
- RoHS compliance 2011/65/EU
- Meet GR-326-CORE
- All Single Mode - Zirconium Sleeves
- All Multimode - Phosphorus Bronze
- SC and LC Choice are one-piece adapters

202212.02

WITH INTERNAL SHUTTERS
Prevents contaminants, extending the life of your fiber backbone

PREMIUM LC

CHOICE LC

FPP-AD-L3QS-03-C **3 Quad (12 Fiber)**

FPP-AD-L1QS-03-C
FPP-AD-LUQS-03-C
FPP-AD-LAQS-03-C

FPP-AD-LUQ-03-C **3 Quad (12 Fiber)**

FPP-AD-L3Q-03-C
FPP-AD-LAQ-03-C
FPP-AD-L1Q-03-C

FPP-AD-LAQS-06-C **6 Quad (24 Fiber)**

FPP-AD-L3QS-06-C
FPP-AD-LUQS-06-C
FPP-AD-L1QS-06-C

FPP-AD-L1Q-06-C **6 Quad (24 Fiber)**

FPP-AD-L3Q-06-C
FPP-AD-LUQ-06-C
FPP-AD-LAQ-06-C

MTP®

FPP-AD-M32-03-C **3 Duplex (6 MTP)**

FPP-AD-MB2-03-C

FPP-AD-MB2-06-C **6 Duplex (12 MTP)**

FPP-AD-M32-06-C

CHOICE SC

FPP-AD-SA2-03-C **3 Duplex (6 Fiber)**

FPP-AD-S32-03-C
FPP-AD-SU2-03-C
FPP-AD-S12-03-C

FPP-AD-S12-06-C **6 Duplex (12 Fiber)**

FPP-AD-S32-06-C
FPP-AD-SU2-06-C
FPP-AD-SA2-06-C

Corning® CCH Compatible Adapter Plates

Buying Guide



CHOICE ST



FPP-AD-TS1-12-C

12 Simplex



FPP-AD-TM1-12-C

CHOICE FC



FPP-AD-FS1-12-C

12 Simplex



FPP-AD-FM1-12-C

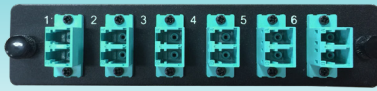
DID YOU KNOW?



LYNN offers LGX to CCH conversion plates to make any standard LGX adapter plate fit into Corning® patch panels.



FPP-AD-CCH

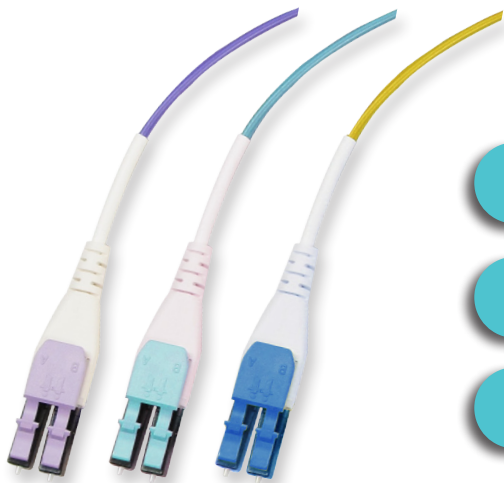


Any LGX Adapter Plate



CCH Compatible Plate

Feature



Toolless Reverse Polarity

Ultra High Performance

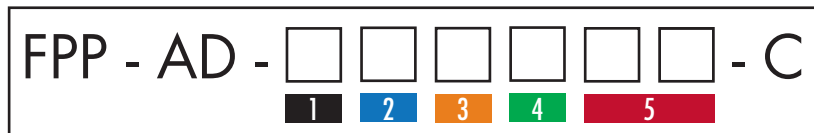
Color Coded Triggers

COLOR-CODED TRIGGERS



* LYNN is not affiliated with Corning® or any of its products or services.

ORDERING INFORMATION



*Custom configurations available

1 CONNECTOR

F = FC
L = LC
M = MTP®
S = SC
T = ST
6 = RJ45 Cat6

2 POLISH/COLOR

1 = OM1/OM2 Beige
3 = OM3/OM4 Aqua
U = Single mode UPC Blue
A = Single mode APC Green
B = Black

If ST or FC Connector:
S = Single mode
M = Multimode
K = Keystone Pass-through

3 PACKAGE

1 = Simplex
2 = Duplex
Q = Quad

4 SHUTTERS

S = Shutters
Blank = No Shutter

5 ADAPTERS (2 Digits)

03 = 3
06 = 6
08 = 8
12 = 12