

BRIDGEPORT



LIQUIDTIGHT CONNECTORS

PRODUCT BROCHURE





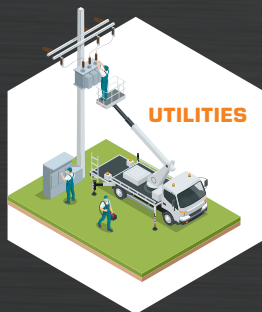
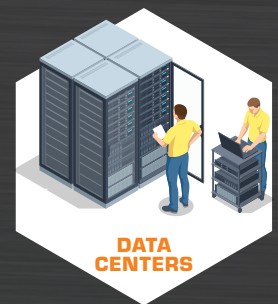
LIQUIDTIGHT CONNECTORS



Liquidtight conduit fittings provide effective protection, flexibility and reliability in electrical systems. These fittings are designed to prevent the entry of water, oil, dust, and other contaminants into electrical installations. NSI provides liquidtight connectors designed to connect LTFMC and Type B liquidtight non-metallic conduit to enclosures as well as transition fittings.

For demanding applications in aggressive environments, choose the NSI portfolio of metallic or non-metallic liquidtight products!

SOLUTIONS FOR EVERY APPLICATION



- Dampen vibration and noise in nonmetallic conduit
- Sealing rings for a liquidtight seal
- Resistant to chlorine and oil

- NM conduit provides more flexibility
- Indoor, outdoor and rooftop applications
- NEMA Type 4, 4X Rating

STRAIGHT CONNECTORS

Straight connectors for use with metallic Type B" liquidtight conduit. NPT Threads. Polyethylene gaskets. NEMA TYPE 2,3,3R,4 & 12. Suitable for use in Class 1 Division 2, Class 2, Divisions 1 & 2; and Class 3, Divisions 1 & 2 per NEC 501.30 (B).

STRAIGHT ALUMINUM			
PRODUCT #	TRADE SIZE	UNIT QTY	STD PKG
430-ALT	1/2"	25	100
431-ALT	3/4"	10	50
432-ALT	1"	5	25
433-ALT	1 - 1/4"	5	20
434-ALT	1 - 1/2"	2	10
435-ALT	2"	2	20



90° CONNECTORS

90° connectors for use with metallic liquidtight conduit. NPT Threads. Polypropylene or Polyethylene gaskets. NEMA TYPE 2,3,3R,4 & 12. Suitable for use in Class 1 Division 2, - Class 2, Divisions 1 & 2; and Class 3, Divisions 1 & 2 per NEC 501.30 (B).

90° ALUMINUM			
PRODUCT #	TRADE SIZE	UNIT QTY	STD PKG
470-ALT	1/2"	25	100
471-ALT	3/4"	10	50
472-ALT	1"	5	25
473-ALT	1 - 1/4"	5	20
474-ALT	1 - 1/2"	2	10
475-ALT	2"	2	20



STRAIGHT CONNECTORS WITH GROUNDING LUGS

Straight connectors for use with metallic Type B" liquidtight conduit. NPT Threads. Polyethylene gaskets. NEMA TYPE 2,3,3R,4 & 12. Suitable for use in Class 1 Division 2, Class 2, Divisions 1 & 2; and Class 3, Divisions 1 & 2 per NEC 501.30 (B).

STRAIGHT W/ GROUNDING LUGS ALUMINUM			
PRODUCT #	TRADE SIZE	UNIT QTY	STD PKG
430-ALTG	1/2"	25	100
431-ALTG	3/4"	10	50
432-ALTG	1"	5	25
433-ALTG	1 - 1/4"	5	20
434-ALTG	1 - 1/2"	2	10
435-ALTG	2"	2	20



METALLIC LIQUIDTIGHT FITTINGS

Steel & Malleable Iron liquidtight connectors provide robust durability and high temperature resistance. Available with insulated throat options to maximize conductor protection and a versatile range of straight, 45-degree and 90-degree configurations. Ideal for demanding environments where durability, protection, and reliability are essential.

Die Cast Zinc liquidtight connectors are cast with ZAMAK alloy, which provides inherent corrosion resistance throughout, not just surface protection. Available with insulated throat options to maximize conductor protection. Ideal for demanding environments where durability, protection, and compatibility are essential.



45° CONNECTORS

45° connectors for use with metallic liquidtight conduit. NPT Threads. Polypropylene or Polyethylene gaskets. NEMA TYPE 2,3,3R,4 & 12. Suitable for use in Class 1 Division 2, - Class 2, Divisions 1 & 2; and Class 3, Divisions 1 & 2 per NEC 501.30 (B)



File No. E9391



File No. LR39354



MALLEABLE IRON BODIES / ZINC PLATED STEEL NUTS			
PRODUCT #	TRADE SIZE	UNIT QTY	STD PKG
449-SLT	3/8"	25	100
450-SLT	1/2"	25	100
451-SLT	3/4"	10	50
452-SLT	1"	5	25
453-SLT	1 - 1/4"	5	25
454-SLT	1 - 1/2"	2	10
455-SLT	2"	1	5

MALLEABLE IRON BODIES / ZINC PLATED STEEL NUTS INSULATED THROAT - 105°C			
PRODUCT #	TRADE SIZE	UNIT QTY	STD PKG
449-SLTI	3/8"	25	100
450-SLTI	1/2"	25	100
451-SLTI	3/4"	10	50
452-SLTI	1"	5	25
453-SLTI	1 - 1/4"	5	25
454-SLTI	1 - 1/2"	2	10
455-SLTI	2"	1	5

MALLEABLE IRON			
PRODUCT #	TRADE SIZE	UNIT QTY	STD PKG
456-SLT	2 - 1/2"	-	1
457-SLT	3"	-	1
458-SLT	3 - 1/2"	-	1
459-SLT	4"	-	1

MALLEABLE IRON / INSULATED THROAT - 105°C			
PRODUCT #	TRADE SIZE	UNIT QTY	STD PKG
456-SLTI	2 - 1/2"	-	1
457-SLTI	3"	-	1
458-SLTI	3 - 1/2"	-	1
459-SLTI	4"	-	1

STRAIGHT CONNECTORS

Straight connectors for use with metallic liquidtight conduit. NPT Threads. Polypropylene or Polyethylene gaskets. NEMA TYPE 2,3,3R,4 & 12. Suitable for use in Class 1 Division 2, - Class 2, Divisions 1 & 2; and Class 3, Divisions 1 & 2 per NEC 501.30 (B). NOTE: UL Listing not applicable to 5" & 6" Malleable Iron.



File No. E9391
436-SLT thru 439-SLT



File No. E9391
Steel and 436-SLTI thru 439-SLTI



File No. LR39354
Steel



MALLEABLE IRON			
PRODUCT #	TRADE SIZE	UNIT QTY	STD PKG
433-SLT	1 - 1/4"	5	20
434-SLT	1 - 1/2"	2	10
435-SLT	2"	2	20
436-SLT	2 - 1/2"	1	5
437-SLT	3"	1	5
438-SLT	3 - 1/2"	1	5
439-SLT	4"	1	5
440-SLT	5"	-	2
441-SLT	6"	-	1

MALLEABLE IRON / INSULATED THROAT - 105°C			
PRODUCT #	TRADE SIZE	UNIT QTY	STD PKG
433-SLTI	1 - 1/4"	5	20
434-SLTI	1 - 1/2"	2	10
435-SLTI	2"	2	20
436-SLTI	2 - 1/2"	1	5
437-SLTI	3"	1	5
438-SLTI	3 - 1/2"	1	5
439-SLTI	4"	1	5
440-SLTI	5"	-	2
441-SLTI	6"	-	1

ZINC PLATED STEEL			
PRODUCT #	TRADE SIZE	UNIT QTY	STD PKG
429-SLT	3/8"	25	100
430-SLT	1/2"	25	100
431-SLT	3/4"	10	50
432-SLT	1"	5	25

ZINC PLATED STEEL / INSULATED THROAT - 105°C			
PRODUCT #	TRADE SIZE	UNIT QTY	STD PKG
429-SLTI	3/8"	25	100
430-SLTI	1/2"	25	100
431-SLTI	3/4"	10	50
432-SLTI	1"	5	25

90° CONNECTORS

90° connectors for use with metallic liquidtight conduit. NPT Threads. Polypropylene or Polyethylene gaskets. NEMA TYPE 3R,4 & 12. Suitable for use in Class 1 Division 2, - Class 2, Divisions 1 & 2; and Class 3, Divisions 1 & 2 per NEC 501.30 (B)



File No. E9391
Steel: 476-SLT thru 479-SLT;
476-SLTI thru 479-SLTI



File No. LR39354
Steel

MALLEABLE IRON BODES / ZINC PLATED STEEL NUTS			
PRODUCT #	TRADE SIZE	UNIT QTY	STD PKG
469-SLT	3/8"	25	100
470-SLT	1/2"	25	100
471-SLT	3/4"	10	50
472-SLT	1"	5	25
473-SLT	1 - 1/4"	5	25
474-SLT	1 - 1/2"	2	10
475-SLT	2"	-	5

MALLEABLE IRON BODES / ZINC PLATED STEEL NUTS INSULATED THROAT - 105°C			
PRODUCT #	TRADE SIZE	UNIT QTY	STD PKG
469-SLTI	3/8"	25	100
470-SLTI	1/2"	25	100
471-SLTI	3/4"	10	50
472-SLTI	1"	5	25
473-SLTI	1 - 1/4"	5	25
474-SLTI	1 - 1/2"	2	10
475-SLTI	2"	-	5

MALLEABLE IRON			
PRODUCT #	TRADE SIZE	UNIT QTY	STD PKG
476-SLTUS	2 - 1/2"	-	1
477-SLTUS	3"	-	1
478-SLTUS	3 - 1/2"	-	1
479-SLTUS	4"	-	1

MALLEABLE IRON / INSULATED THROAT - 105°C			
PRODUCT #	TRADE SIZE	UNIT QTY	STD PKG
476-SLTIUS	2 - 1/2"	-	1
477-SLTIUS	3"	-	1
478-SLTIUS	3 - 1/2"	-	1
479-SLTIUS	4"	-	1

90° CONNECTORS

90° connectors for use with metallic liquidtight conduit. NPT Threads. Polypropylene or Polyethylene gaskets. NEMA TYPE 3R,4 & 12. Suitable for use in Class 1 Division 2, - Class 2, Divisions 1 & 2; and Class 3, Divisions 1 & 2 per NEC 501.30 (B)



File No. E9391



File No. LR39354

DIE CAST ZINC			
PRODUCT #	TRADE SIZE	UNIT QTY	STD PKG
469-LT2	3/8"	25	100
470-LT2	1/2"	25	100
471-LT2	3/4"	10	50
472-LT2	1"	5	25
473-LT2	1 - 1/4"	5	25

DIE CAST ZINC / INSULATED THROAT - 105°C			
PRODUCT #	TRADE SIZE	UNIT QTY	STD PKG
469-LTI2	3/8"	25	100
470-LTI2	1/2"	25	100
471-LTI2	3/4"	10	50
472-LTI2	1"	5	25
473-LTI2	1 - 1/4"	5	25

ZINC CAST			
PRODUCT #	TRADE SIZE	UNIT QTY	STD PKG
474-LT2	1 - 1/2"	2	10
475-LT2	2"	-	5
476-LT2	2 - 1/2"	-	1
477-LT2	3"	-	1
478-LT2	3 - 1/2"	-	1
479-LT2	4"	-	1

ZINC CAST / INSULATED THROAT - 105°C			
PRODUCT #	TRADE SIZE	UNIT QTY	STD PKG
474-LTI2	1 - 1/2"	2	10
475-LTI2	2"	-	5
476-LTI2	2 - 1/2"	-	1
477-LTI2	3"	-	1
478-LTI2	3 - 1/2"	-	1
479-LTI2	4"	-	1

STRAIGHT CONNECTORS

Straight connectors for use with metallic and nonmetallic "Type B" liquidtight conduit. NPT Threads. Polyethylene gaskets. NEMA TYPE 3R,4 & 12. Suitable for use in Class 1 Division 2, Class 2, Divisions 1 & 2; and Class 3, Divisions 1 & 2 per NEC 501.30 (B).



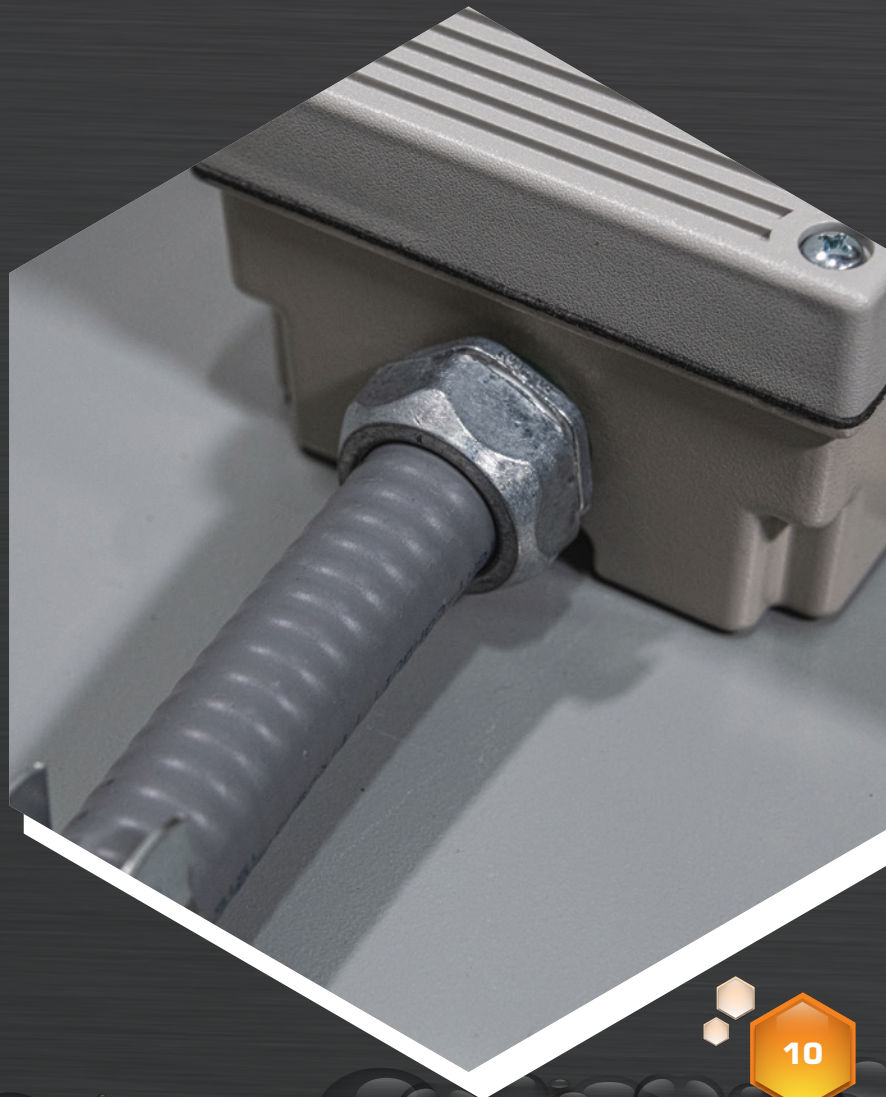
File No. E9391



File No. LR39354

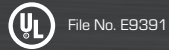
DIE CAST ZINC			
PRODUCT #	TRADE SIZE	UNIT QTY	STD PKG
429-LT2	3/8"	25	100
430-LT2	1/2"	25	100
431-LT2	3/4"	10	50
432-LT2	1"	5	25
433-LT2	1 - 1/4"	5	20
434-LT2	1 - 1/2"	2	10
435-LT2	2"	2	20
436-LT2	2 - 1/2"	1	5
437-LT2	3"	1	5
438-LT2	3 - 1/2"	1	5
439-LT2	4"	1	5

DIE CAST ZINC / INSULATED THROAT - 105°C			
PRODUCT #	TRADE SIZE	UNIT QTY	STD PKG
429-LT12	3/8"	25	100
430-LT12	1/2"	25	100
431-LT12	3/4"	10	50
432-LT12	1"	5	25
433-LT12	1 - 1/4"	5	20
434-LT12	1 - 1/2"	2	10
435-LT12	2"	2	20
436-LT12	2 - 1/2"	1	5
437-LT12	3"	1	5
438-LT12	3 - 1/2"	1	5
439-LT12	4"	1	5



STRAIGHT CONNECTORS

Straight malleable iron connectors for use with metallic liquidtight conduit. Zinc Electroplated. NPT Threads. Polypropylene or Polyethylene gaskets. NEMA TYPE 2,3,3R,4 & 12. Suitable for use in Class 1 Division 2, - Class 2, Divisions 1 & 2; and Class 3, Divisions 1 & 2 per NEC 501.30 (B).

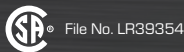
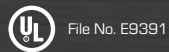


DIE CAST ZINC			
PRODUCT #	TRADE SIZE	UNIT QTY	STD PKG
429-SLTUS	3/8"	25	100
430-SLTUS	1/2"	25	100
431-SLTUS	3/4"	10	50
432-SLTUS	1"	5	25
433-SLTUS	1 - 1/4"	5	20
434-SLTUS	1 - 1/2"	2	10
435-SLTUS	2"	2	20
436-SLTUS	2 - 1/2"	1	5
437-SLTUS	3"	1	5
438-SLTUS	3 - 1/2"	1	5
439-SLTUS	4"	1	5

ZINC PLATED STEEL / INSULATED THROAT - 105°C			
PRODUCT #	TRADE SIZE	UNIT QTY	STD PKG
429-SLTIUS	3/8"	25	100
430-SLTIUS	1/2"	25	100
431-SLTIUS	3/4"	10	50
432-SLTIUS	1"	5	25
433-SLTIUS	1 - 1/4"	5	20
434-SLTIUS	1 - 1/2"	2	10
435-SLTIUS	2"	2	20
436-SLTIUS	2 - 1/2"	1	5
437-SLTIUS	3"	1	5
438-SLTIUS	3 - 1/2"	1	5
439-SLTIUS	4"	1	5

45° CONNECTORS

45° malleable iron connectors for use with metallic liquidtight conduit. Zinc Electroplated. NPT Threads. Polypropylene or Polyethylene gaskets. NEMA TYPE 2,3,3R,4 & 12. Suitable for use in Class 1 Division 2, - Class 2, Divisions 1 & 2; and Class 3, Divisions 1 & 2 per NEC 501.30 (B).



MALLEABLE IRON BODIES / ZINC PLATED STEEL NUTS			
PRODUCT #	TRADE SIZE	UNIT QTY	STD PKG
449-SLTUS	3/8"	25	100
450-SLTUS	1/2"	25	100
451-SLTUS	3/4"	10	50
452-SLTUS	1"	5	25
453-SLTUS	1 - 1/4"	5	25
454-SLTUS	1 - 1/2"	2	10
455-SLTUS	2"	1	5

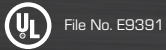
MALLEABLE IRON BODIES / ZINC PLATED STEEL NUTS INSULATED THROAT - 105°C			
PRODUCT #	TRADE SIZE	UNIT QTY	STD PKG
449-SLTIUS	3/8"	25	100
450-SLTIUS	1/2"	25	100
451-SLTIUS	3/4"	10	50
452-SLTIUS	1"	5	25
453-SLTIUS	1 - 1/4"	5	25
454-SLTIUS	1 - 1/2"	2	10
455-SLTIUS	2"	1	5

MALLEABLE IRON			
PRODUCT #	TRADE SIZE	UNIT QTY	STD PKG
456-SLTUS	2 - 1/2"	-	1
457-SLTUS	3"	-	1
458-SLTUS	3 - 1/2"	-	1
459-SLTUS	4"	-	1

MALLEABLE IRON / INSULATED THROAT - 105°C			
PRODUCT #	TRADE SIZE	UNIT QTY	STD PKG
456-SLTIUS	2 - 1/2"	-	1
457-SLTIUS	3"	-	1
458-SLTIUS	3 - 1/2"	-	1
459-SLTIUS	4"	-	1

90° CONNECTORS

90° connectors for use with metallic liquidtight conduit. NPT Threads. Polypropylene or Polyethylene gaskets. NEMA TYPE 2,3,3R,4 & 12. Suitable for use in Class 1 Division 2, - Class 2, Divisions 1 & 2; and Class 3, Divisions 1 & 2 per NEC 501.30 (B)



MALLEABLE IRON BODIES / ZINC PLATED STEEL NUTS			
PRODUCT #	TRADE SIZE	UNIT QTY	STD PKG
469-SLTUS	3/8"	25	100
470-SLTUS	1/2"	25	100
471-SLTUS	3/4"	10	50
472-SLTUS	1"	5	25
473-SLTUS	1 - 1/4"	5	25
474-SLTUS	1 - 1/2"	2	10
475-SLTUS	2"	-	5



MALLEABLE IRON			
PRODUCT #	TRADE SIZE	UNIT QTY	STD PKG
476-SLTUS	2 - 1/2"	-	1
477-SLTUS	3"	-	1
478-SLTUS	3 - 1/2"	-	1
479-SLTUS	4"	-	1

MALLEABLE IRON / INSULATED THROAT - 105°C			
PRODUCT #	TRADE SIZE	UNIT QTY	STD PKG
476-SLTIUS	2 - 1/2"	-	1
477-SLTIUS	3"	-	1
478-SLTIUS	3 - 1/2"	-	1
479-SLTIUS	4"	-	1

LIQUIDTIGHT SEALING RINGS

Provides liquidtight sealing with connector to box or enclosure. Rubber with steel retaining ring. NEMA TYPE 2,3,3R, 4.

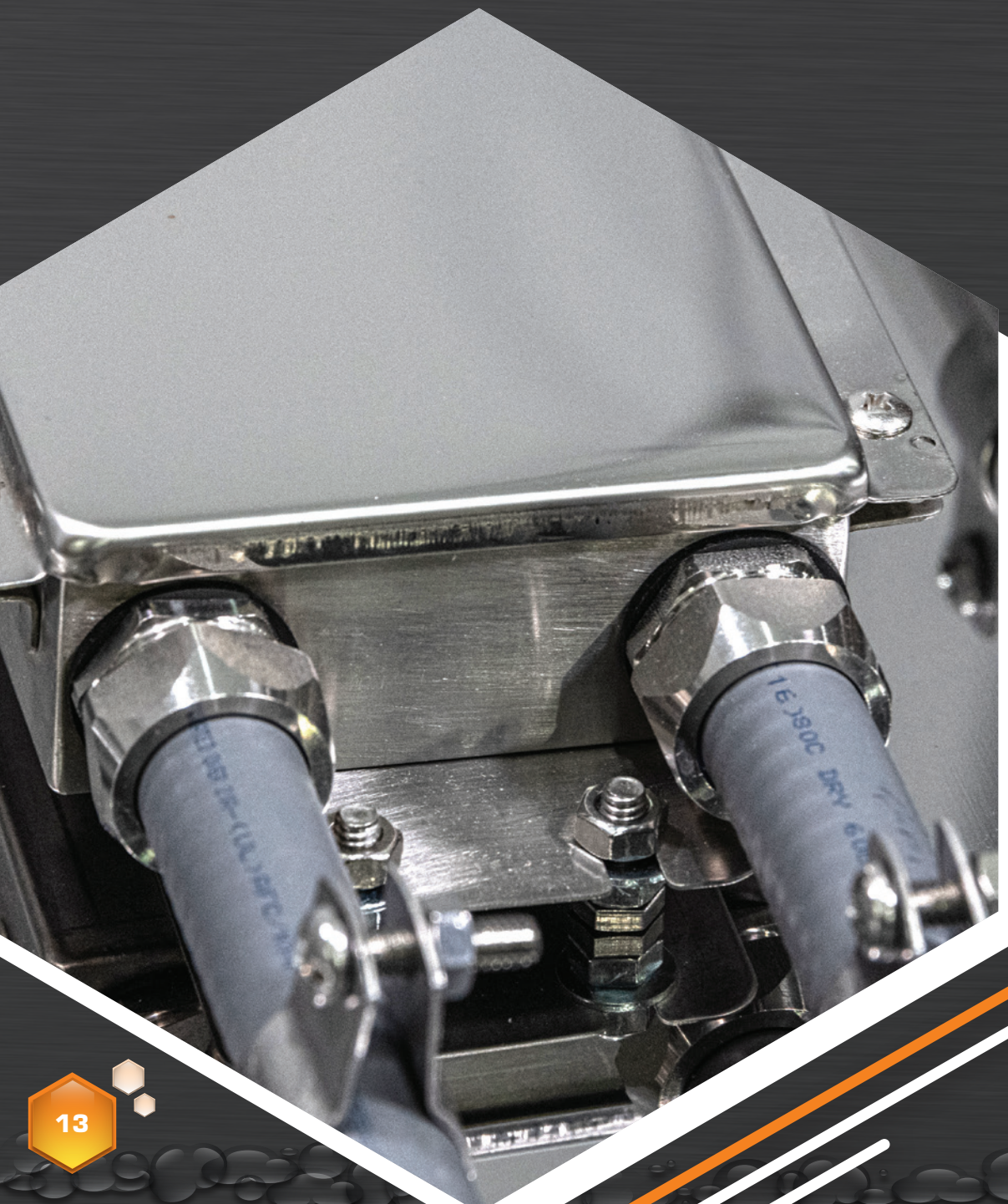
POLYETHYLENE WITH STEEL RETAINER			
PRODUCT #	TRADE SIZE	UNIT QTY	STD PKG
SR-050	1/2"	100	400
SR-075	3/4"	100	400
SR-100	1"	100	400
SR-125	1 - 1/4"	50	200
SR-150	1 - 1/2"	50	200
SR-200	2"	50	200
SR-250	2 - 1/2"	-	5
SR-300	3"	-	5
SR-350	3 - 1/2"	-	5
SR-400	4"	-	5



STAINLESS STEEL LIQUIDTIGHT FITTINGS

Stainless Steel liquidtight connectors provide superior corrosion resistance. When looking for a solution for hygienic, wash down areas or highly corrosive environments, Stainless Steel is a safe choice.

Ideal for food and beverage, petro-chemical, and waste water facilities.



- Food & Beverage Processing
- Petrochemical
- Pulp & Paper Mills
- Wastewater Treatment
- Offshore Oil Rigs & Platforms
- Chemical Processing

- Heavy-duty:
 - Electrical Motors
 - Generators
 - Transformers
- Portable Equipment
- Machine Tool Building

STRAIGHT CONNECTORS

Rated IP68 and NEMA 4X these connectors offer all the corrosion resistance you need and the strength of stainless steel.

STRAIGHT STAINLESS STEEL			
PRODUCT #	TRADE SIZE	UNIT QTY	STD PKG
LMSS-02	3/8"	1	30
LMSS-12	1/2"	1	25
LMSS-22	3/4"	1	20
LMSS-32	1"	1	10
LMSS-42	1 - 1/4"	1	5
LMSS-52	1 - 1/2"	1	5
LMSS-62	2"	1	4



90° CONNECTORS

These 90 degree connectors are rated IP68 and NEMA 4X these connectors offer all the corrosion resistance you need and the strength of stainless steel.

90° STAINLESS STEEL			
PRODUCT #	TRADE SIZE	UNIT QTY	STD PKG
LLSS-02	3/8"	1	30
LLSS-12	1/2"	1	25
LLSS-22	3/4"	1	15
LLSS-32	1"	1	5
LLSS-42	1 - 1/4"	1	3
LLSS-52	1 - 1/2"	1	2
LLSS-62	2"	1	2



NON-METALLIC LIQUIDTIGHT FITTINGS

Non-metallic liquidtight connectors provide several advantages, including their corrosion resistance, light weight, and non-conductive design. Available with a push on, tool-free design option.

Ideal for residential, HVAC, and solar applications.



STRAIGHT & 90°

Nonmetallic straight and 90° connectors for use with nonmetallic "Type B" liquidtight conduit. Sunlight resistant. NPT Threads. Polypropylene or Polyethylene gaskets. NEMA TYPE 2,3,3R,4,4X & 12.



File No. E9391



STRAIGHT			
PRODUCT #	TRADE SIZE	UNIT QTY	STD PKG
429-NMLT	3/8"	25	100
430-NMLT	1/2"	25	100
431-NMLT	3/4"	10	50
432-NMLT	1"	5	25
433-NMLT	1 - 1/4"	5	25
434-NMLT	1 - 1/2"	2	10
435-NMLT	2"	2	10

90°			
PRODUCT #	TRADE SIZE	UNIT QTY	STD PKG
469-NMLT	3/8"	25	100
470-NMLT	1/2"	25	100
471-NMLT	3/4"	10	50
472-NMLT	1"	5	25
473-NMLT	1 - 1/4"	5	25
474-NMLT	1 - 1/2"	2	10
475-NMLT	2"	2	10

SCREW-ON STRAIGHT & 90°

Nonmetallic straight and 90° connectors for use with nonmetallic "Type B" liquidtight conduit. Connectors simply screw onto conduit. No tools required. Sunlight resistant. NPT Threads. Rubber O-ring. NEMA TYPE 2,3,3R,4,4X & 12.



File No. E9391



SCREW-ON STRAIGHT			
PRODUCT #	TRADE SIZE	UNIT QTY	STD PKG
430-NMLTS	1/2"	25	100
431-NMLTS	3/4"	25	100

SCREW-ON 90°			
PRODUCT #	TRADE SIZE	UNIT QTY	STD PKG
470-NMLTS	1/2"	25	100
471-NMLTS	3/4"	25	100

PUSH-ON STRAIGHT & 90°

Nonmetallic straight and 90° connectors for use with nonmetallic "Type B" liquidtight conduit. Connectors simply push onto conduit. No tools required. Sunlight resistant. NPT Threads. NEMA TYPE 2,3,3R,4,4X & 12.



US

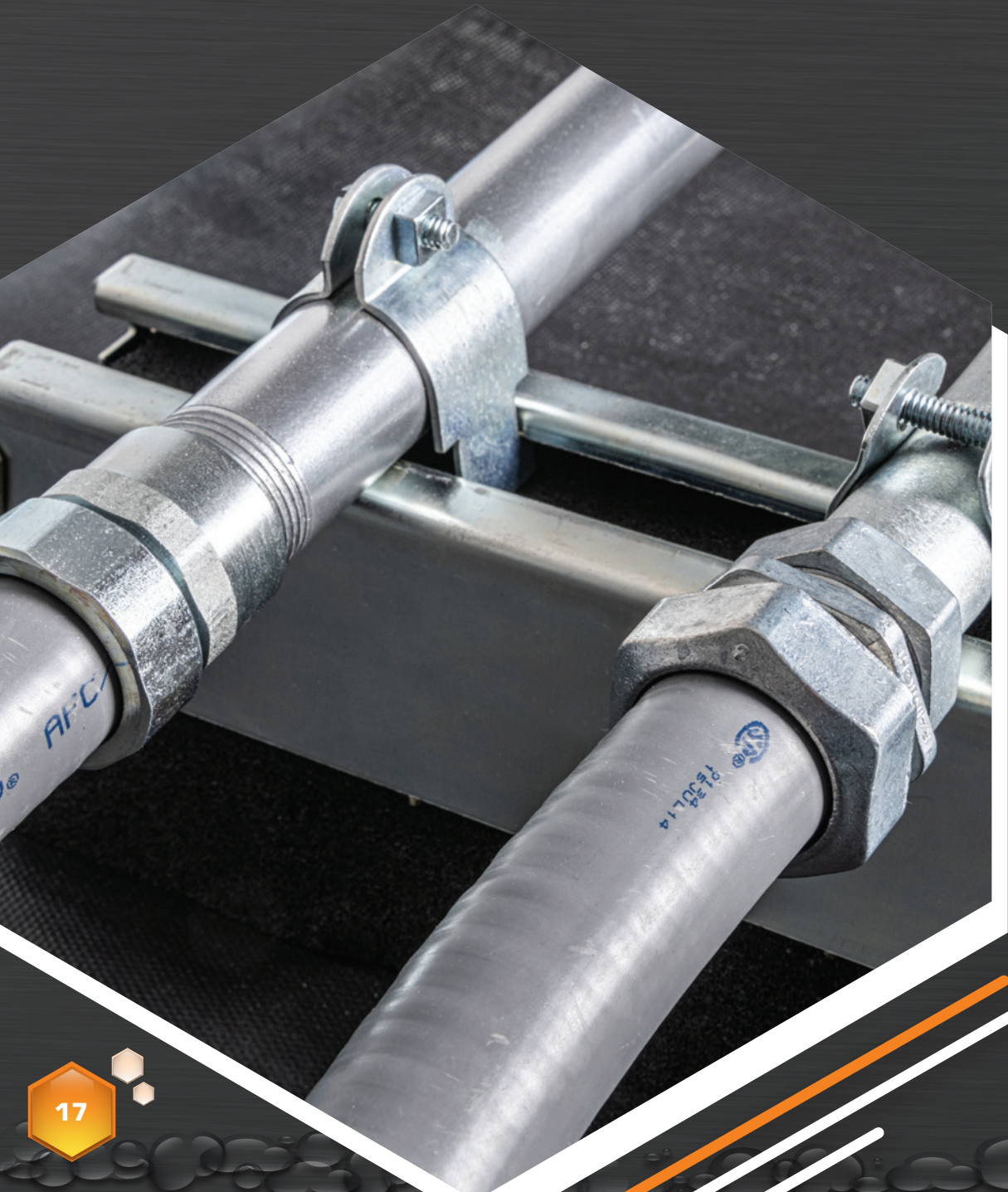


PUSH-ON STRAIGHT			
PRODUCT #	TRADE SIZE	UNIT QTY	STD PKG
430-PLT	1/2"	25	100
431-PLT	3/4"	25	100

PUSH-ON 90°			
PRODUCT #	TRADE SIZE	UNIT QTY	STD PKG
470-PLT	1/2"	25	100
471-PLT	3/4"	25	100

TRANSITION LIQUIDTIGHT FITTINGS

Bridgeport is the leader in transition fittings, and we carry parts to cover all combinations of conduit and Liquidtight FMC, including the only nonmetallic **rigid-to-liquidtight** transition coupling currently on the market!



PUSH-LQT™ PUSH-ON TRANSITION COUPLINGS

Push-on nonmetallic transitions couplings for use with nonmetallic "Type B" liquidtight conduit and Rigid Conduit. Connectors simply push onto LT conduit, and can be threaded onto Rigid/IMC Conduit. Sunlight resistant. NPT Threads. NEMA TYPE 2,3,3R,4,4X & 12.

NONMETALLIC			
PRODUCT #	TRADE SIZE	UNIT QTY	STD PKG
4370-PLT	1/2"	10	50
4371-PLT	3/4"	10	50



TRANSITION COUPLINGS

Coupling used to join either metallic or nonmetallic "Type B" liquidtight to EMT. Concrete-tight. UL Listed "Raintight". Patented. US Patent 7,390,027.

ZINC DIE CAST				
PRODUCT #	TRADE SIZE	LT TRADE SIZE	UNIT QTY	STD PKG
4360-DC	1/2"	1/2"	25	100
4361-DC	3/4"	3/4"	10	50
4362-DC	1"	1"	10	50
4363-DC	1 - 1/4"	1 - 1/4"	5	25
4364-DC	1 - 1/2"	1 - 1/2"	5	25
4365-DC	2"	2"	5	20



RIGID TRANSITION COUPLINGS

Used to join Rigid/IMC to liquidtight metallic conduit. Concrete-tight UL Listed "Raintight" NPT Female Thread. NEMA TYPE 2,3,3R,4 & 12 Suitable for use in Class 1 Div 2, Class 2 Div 1 & 2 and Class 3 Div 1&2 per NEC 501.30(B)

MALLEABLE IRON				
PRODUCT #	TRADE SIZE	RIGID TRADE SIZE	UNIT QTY	STD PKG
4369-LT	3/8"	1/2"	25	125
4370-LT	1/2"	1/2"	20	100
4371-LT	3/4"	3/4"	10	50
4372-LT	1"	1"	5	25
4373-LT	1-1/4"	1-1/4"	4	20
4374-LT	1-1/2"	1-1/2"	3	15
4375-LT	2"	2"	2	10



EVERY APPLICATION COVERED



RESIDENTIAL



COMMERCIAL



RENEWABLE ENERGY

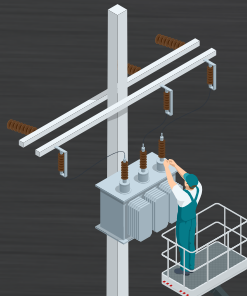


MALLEABLE IRON



DIE-CAST ZINC

DATA CENTERS

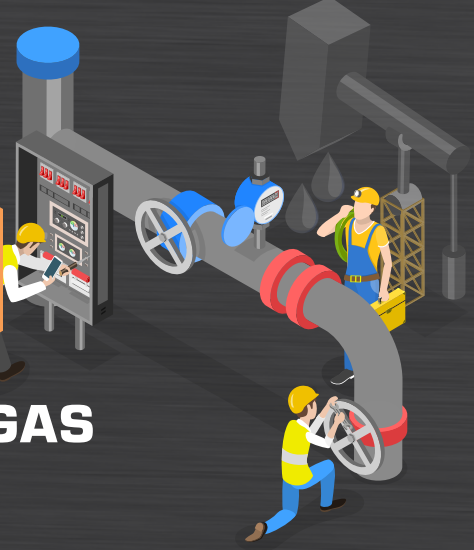


STAINLESS STEEL



ALUMINUM

CHEMICAL / OIL & GAS



MALLEABLE IRON

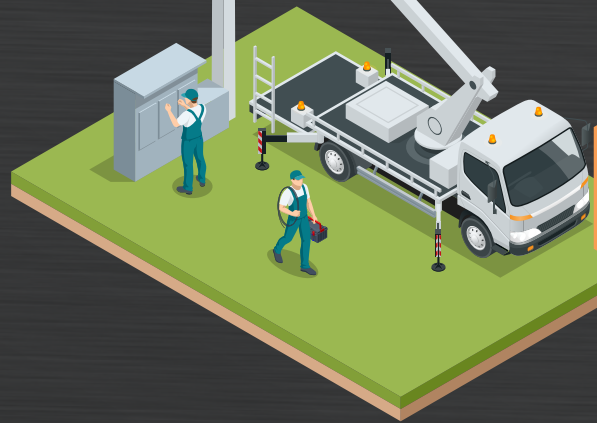


STAINLESS STEEL



ALUMINUM

UTILITIES



ZINC-PLATED STEEL



MALLEABLE IRON



STAINLESS STEEL



ALUMINUM

INDUSTRIAL / MANUFACTURING



