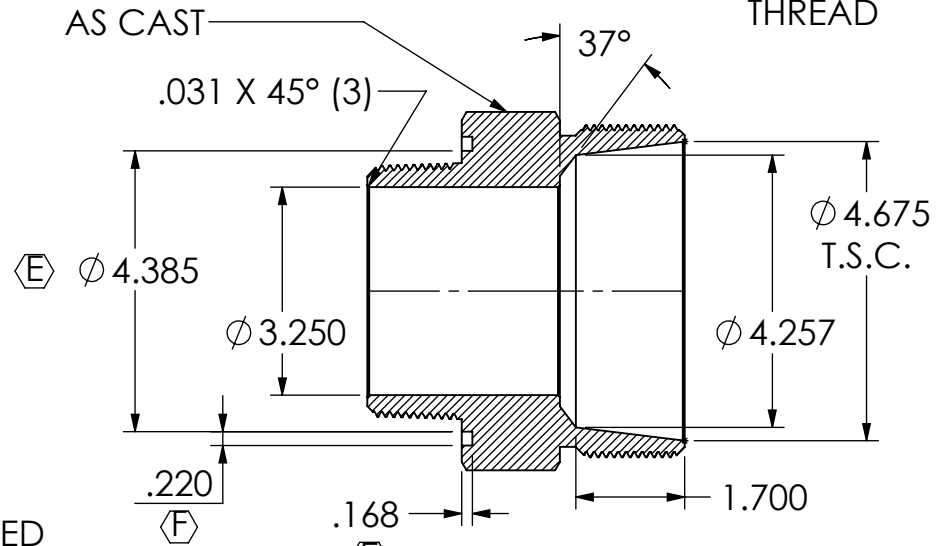
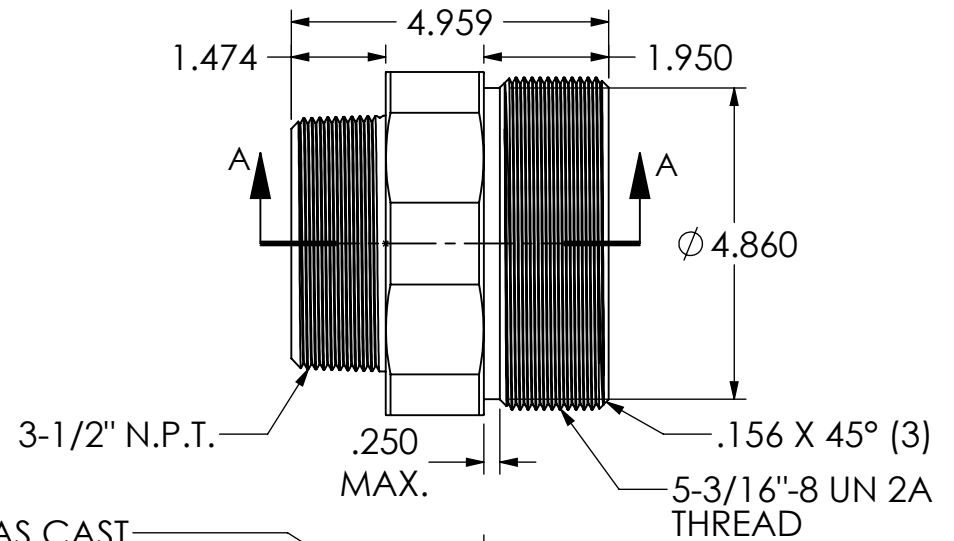
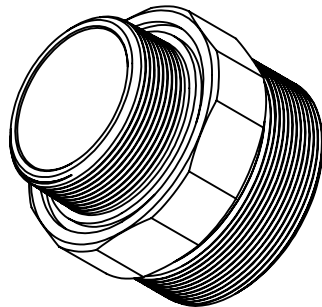


30° CHAMFER TO ϕ 5.340
(BOTH SIDES)



SECTION A-A

- NOTES:
- ALL AREAS ARE MACHINED, EXCEPT WHERE NOTED
 - PARTS ARE TO BE FREE OF BURRS AND SHARP CORNERS

REV.	DATE	CHANGE	UNLESS OTHERWISE SPECIFIED:	NAME	DATE	REMKE REMKE INDUSTRIES 310 CHADDICK DR, WHEELING, IL. 60090		
A	5/30/13	RELEASED FOR TOOLING QUOTE	DIMENSIONS ARE IN INCHES TOLERANCES: FRACTIONAL \pm 1/64 ANGULAR: MACH \pm 1° BEND \pm 1° ONE PLACE DECIMAL \pm .015 TWO PLACE DECIMAL \pm .010 THREE PLACE DECIMAL \pm .005	DRAWN	JCN	5/14	TITLE: <h1>BODY</h1>	
B	10/9/13	UPDATED DIMENSIONS		CHECKED				
C	8/8/14	CHANGED "BREAK SHARP CORNER" TO 1/32" X 45°		ENG APPR.				
D	11/20/14	CHANGED BODY BORE FROM 3.00" TO 3.25"	INTERPRET GEOMETRIC TOLERANCING PER:	MFG APPR.			Q.A. PROPRIETARY AND CONFIDENTIAL THE INFORMATION CONTAINED IN THIS DRAWING IS THE SOLE PROPERTY OF REMKE INDUSTRIES. ANY REPRODUCTION IN PART OR AS A WHOLE WITHOUT THE WRITTEN PERMISSION OF REMKE INDUSTRIES IS PROHIBITED.	
E	8/29/17	GROOVE WIDTH .300" WAS .206"; GROOVE DEPTH .168" WAS .160"; GROOVE ID 4.385" WAS 4.392"	MATERIAL			SIZE		DWG. NO.
F	10/19/17	GROOVE WIDTH .220" WAS .300"	ALUMINUM			A		RSR-1150-B
			FINISH			SCALE: .3:1	SHEET 1 OF 1	
			DO NOT SCALE DRAWING					

5

4

3

2

1